

CERTIFICATE OF LOCATION OF GOVERNMENT CORNER

County of Anoka

State of Minnesota

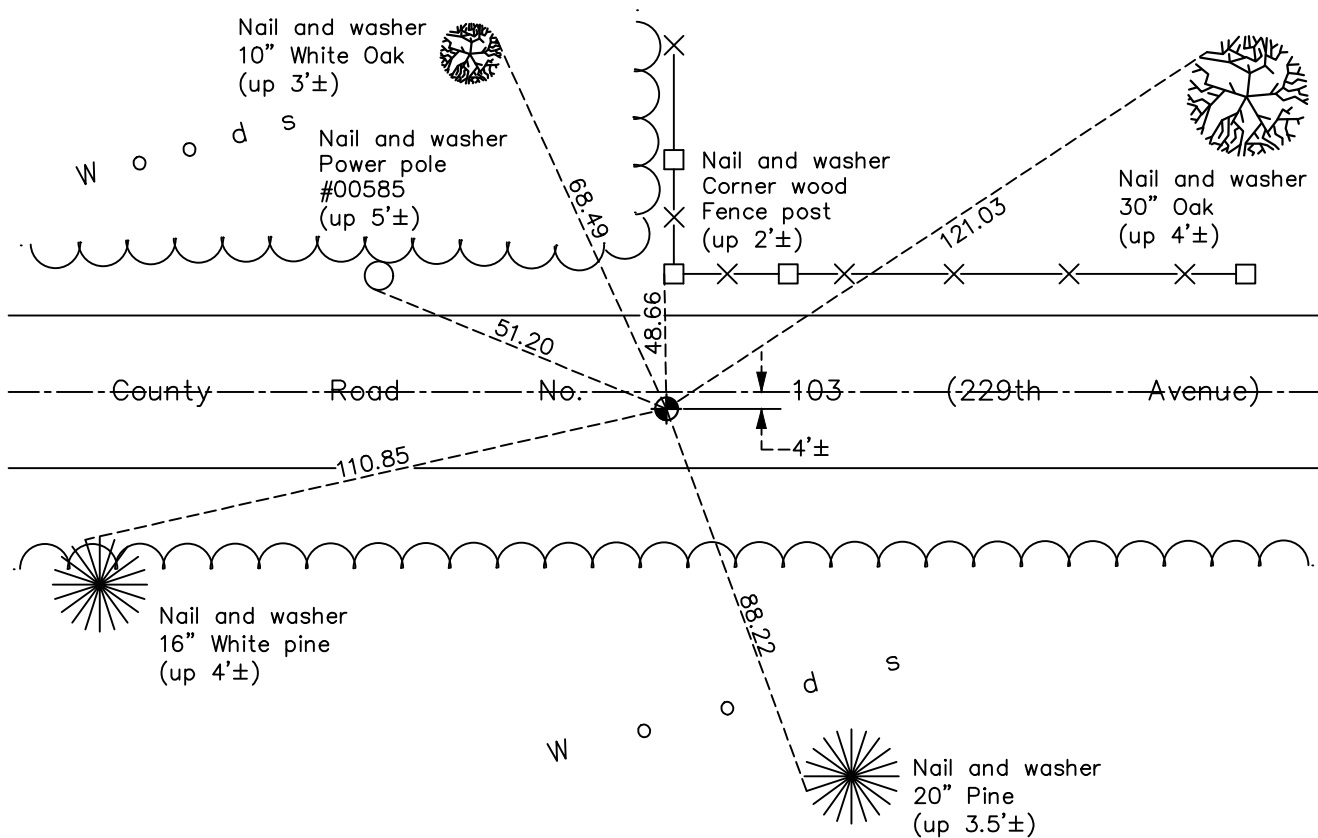
Northwest Corner of Sec. 2 Township 33 Range 24

On the 10th day of December, 1970, the described corner was evidenced by area resurvey

and to perpetuate the location of said corner, at the exact location thereof, a permanent marker was placed consisting of a cast iron monument

AND on the 7th day of December, 2020, said permanent marker was found flush with the surface and the ties were updated

Updated reference ties are as shown below.



Revision Date

04/14/2021

N.A.D. 1983 Coordinates
(1996 Adjustment)

County Project Coordinates	
Northing	<u>227431.5711</u>
Easting	<u>489798.8609</u>
Date	<u>3/20/01</u>

I hereby certify that this United States public land survey monument record is correct and complete to the best of my knowledge and belief.

David M Zieglmeier Date 7/27/21

David Zieglmeier Anoka County Surveyor
Minnesota License Number 46179

HISTORY OF GOVERNMENT CORNER

Page No. 5

County of Anoka

State of Minnesota

Northwest Corner of Sec. 2 Township 33 Range 24

CORNER HISTORY:

December 10, 1970 - Set iron pipe flush in blacktop road 4.5'± south of centerline using area resurvey. Established ties to iron pipe.

May 10, 1971 - Set cast iron monument flush using corner ties. Updated ties.

June 25, 1975 - Found cast iron monument and updated ties.

June 23, 1978 - Found cast iron monument and updated ties.

July 15, 1981 - Found cast iron monument 4'± south of centerline and updated ties.

August 7, 1984 - Found cast iron monument and updated ties.

July 20, 1987 - Found cast iron monument and updated ties.

July 2, 1992 - Found cast iron monument and updated ties.

June 2, 1997 - Found cast iron monument and updated ties.

March 20, 2001 - Found cast iron monument and updated ties. Established NAD 1983 (1996 adj.) Anoka County project coordinates by static GPS methods.

September 6, 2011 - Found cast iron monument missing. Set temporary P.K. nail using corner ties. Checked position by VRS GPS methods.

March 26, 2012 - Set cast iron monument using static GPS methods. Updated ties.

March 31, 2017 - Found cast iron monument flush. Verified position by VRS GPS methods. Updated ties.

December 7, 2020 - Found cast iron monument flush. Verified position by VRS GPS methods. Updated ties.