

# CERTIFICATE OF LOCATION OF GOVERNMENT CORNER

County of Anoka

State of Minnesota

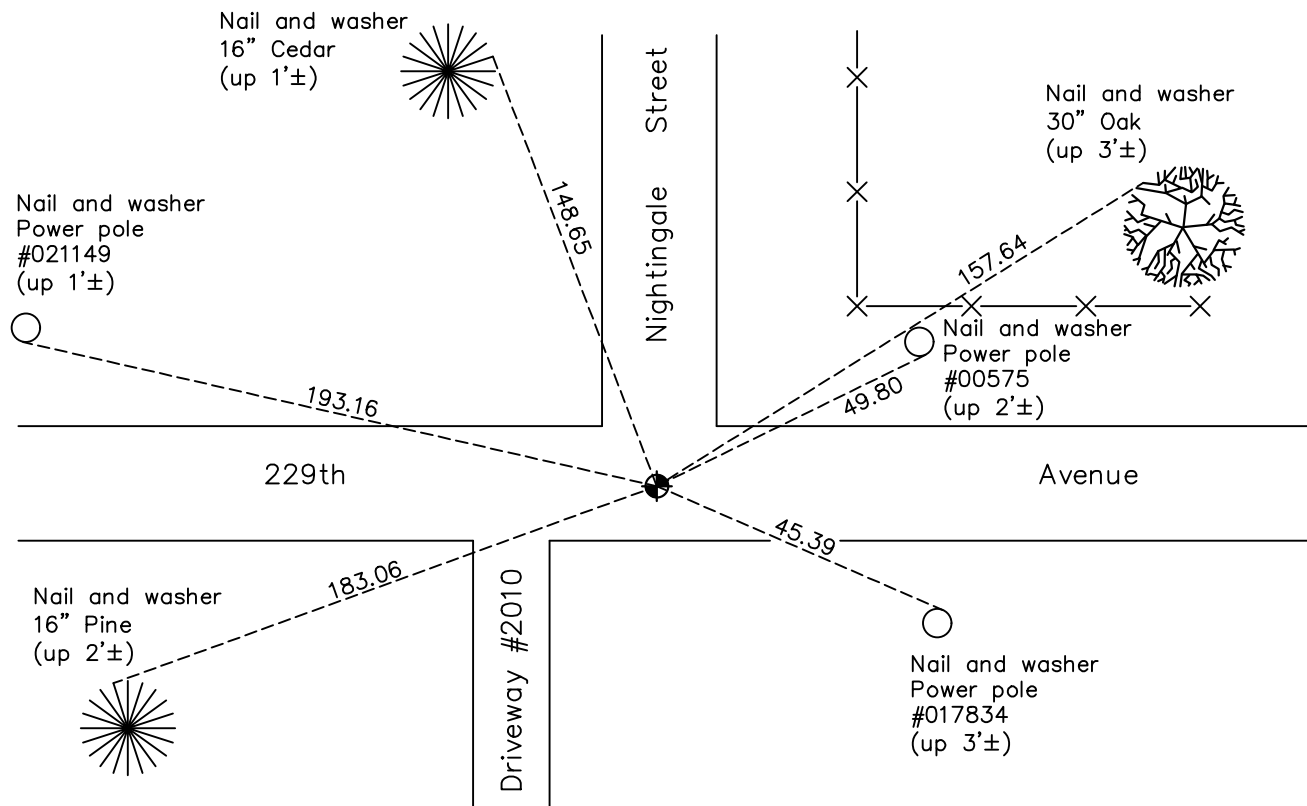
## North $\frac{1}{4}$ Corner of Sec. 3 Township 33 Range 24

On the 8th day of December, 1970, the described corner was evidenced by area resurvey

and to perpetuate the location of said corner, at the exact location thereof, a permanent marker was placed consisting of a cast iron monument

AND on the 7th day of December, 2020, said permanent marker was found flush with the surface and the ties were updated

Updated reference ties are as shown below.



Revision Date

04/14/2021

N.A.D. 1983 Coordinates  
(1996 Adjustment)

County Project Coordinates	
Northing	<u>227433.1091</u>
Easting	<u>487172.3419</u>
Date	<u>3/23/01</u>

I hereby certify that this United States public land survey monument record is correct and complete to the best of my knowledge and belief.

*David M Zieglmeier* Date 7/27/21

David Zieglmeier Anoka County Surveyor  
Minnesota License Number 46179

# HISTORY OF GOVERNMENT CORNER

Page No. 6

County of Anoka

State of Minnesota

North 1/4 Corner of Sec. 3 Township 33 Range 24

## **CORNER HISTORY:**

December 8, 1970 - Set iron pipe flush in blacktop road using area resurvey. Established ties to iron pipe.

May 10, 1971 - Found iron pipe and replaced with a cast iron monument flush. Updated ties.

June 25, 1975 - Found cast iron monument and updated ties.

October 24, 1977 - Found cast iron monument down and raised flush.

June 23, 1978 - Found cast iron monument and updated ties.

August 2, 1983 - Replaced cast iron monument.

August 7, 1984 - Found cast iron monument and updated ties.

July 7, 1992 - Found cast iron monument and updated ties.

June 2, 1997 - Found cast iron monument and updated ties.

March 23, 2001 - Found cast iron monument and updated ties. Established NAD 1983 (1996 adj.) Anoka County project coordinates by static GPS methods.

September 6, 2011 - Found cast iron monument missing. Set temporary P.K. nail using corner ties. Checked position by VRS GPS methods.

March 26, 2012 - Set cast iron monument using static GPS methods. Updated ties.

April 7, 2017 - Found cast iron monument. Verified position by VRS GPS methods. Updated ties.

December 7, 2020 - Found cast iron monument. Verified position by VRS GPS methods. Updated ties.