

CERTIFICATE OF LOCATION OF GOVERNMENT CORNER

County of Anoka

State of Minnesota

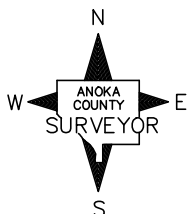
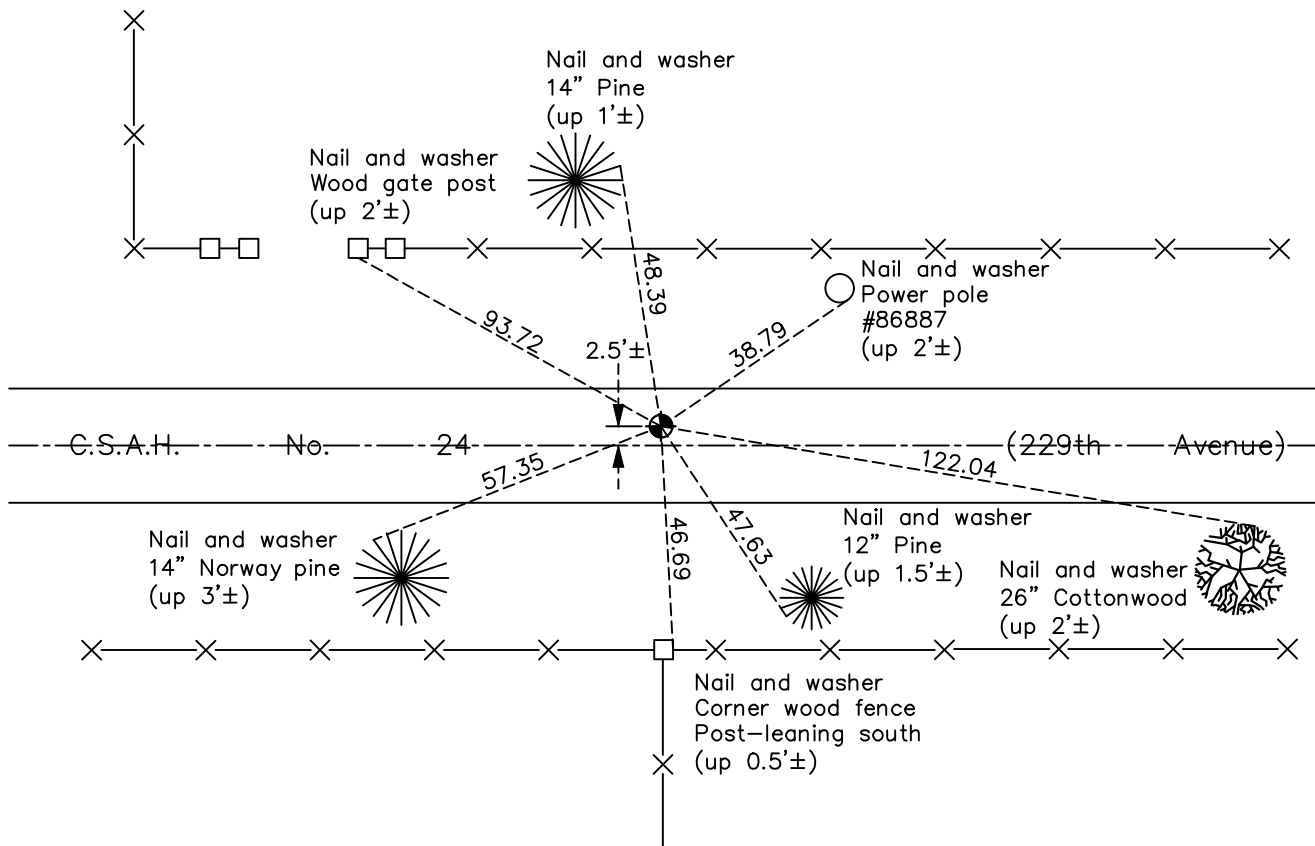
Northeast Corner of Sec. 4 Township 33 Range 24

On the 25th day of May, 1961, the described corner was evidenced by area resurvey

and to perpetuate the location of said corner, at the exact location thereof, a permanent marker was placed consisting of a cast iron monument

AND on the 7th day of December, 2020, said permanent marker was found and the ties were updated

Updated reference ties are as shown below.



Revision Date

04/14/2021

N.A.D. 1983 Coordinates
(1996 Adjustment)

County Project Coordinates	
Northing	<u>227437.8147</u>
Easting	<u>484533.9262</u>
Date	<u>3/23/01</u>

I hereby certify that this United States public land survey monument record is correct and complete to the best of my knowledge and belief.

David M Zieglmeier Date 7/27/21

David Zieglmeier Anoka County Surveyor
Minnesota License Number 46179

HISTORY OF GOVERNMENT CORNER

Page No. 7

County of Anoka

State of Minnesota

Northeast Corner of Sec. 4 Township 33 Range 24

CORNER HISTORY:

September 30, 1946 - Harvey Cartwright found a nail and hub using an old tie. Replaced with a concrete monument and updated the ties.

May 25, 1961 - Found two of Cartwright's ties and dug down 4' in centerline of road. Concrete monument missing. Set cast iron monument using the two remaining ties.

July 16, 1965 - Found cast iron monument 1.5'± north of centerline and updated ties.

June 17, 1968 - Replaced cast iron monument with removable top cast iron monument flush with blacktop road. Updated ties.

September 17, 1969 - Found cast iron monument down and raised flush. Updated ties.

July 19, 1971 - Found cast iron monument and updated ties.

June 25, 1975 - Found cast iron monument and updated ties.

October 24, 1977 - Found cast iron monument down and raised flush.

June 23, 1978 - Found cast iron monument and updated ties.

July 15, 1981 - Found cast iron monument and updated ties.

August 7, 1984 - Found cast iron monument and updated ties.

July 2, 1992 - Found cast iron monument and updated ties.

June 2, 1997 - Found cast iron monument and updated ties.

March 23, 2001 - Found cast iron monument and updated ties. Established NAD 1983 (1996 adj.) Anoka County project coordinates by static GPS methods.

September 6, 2011 - Found cast iron monument. Verified position by VRS GPS methods. Updated ties.

July 8, 2015 - Found cast iron monument, set construction ties, updated corner ties, and verified position by VRS GPS methods prior to road construction. Removed monument.

November 2, 2015 - Set cast iron monument flush after road construction using static GPS methods. Verified position by VRS GPS methods. Updated ties.

April 7, 2017 - Found cast iron monument. Verified position by VRS GPS methods. Updated ties.

December 7, 2020 - Found cast iron monument. Verified position by VRS GPS methods. Updated ties.