

# CERTIFICATE OF LOCATION OF GOVERNMENT CORNER

County of Anoka

State of Minnesota

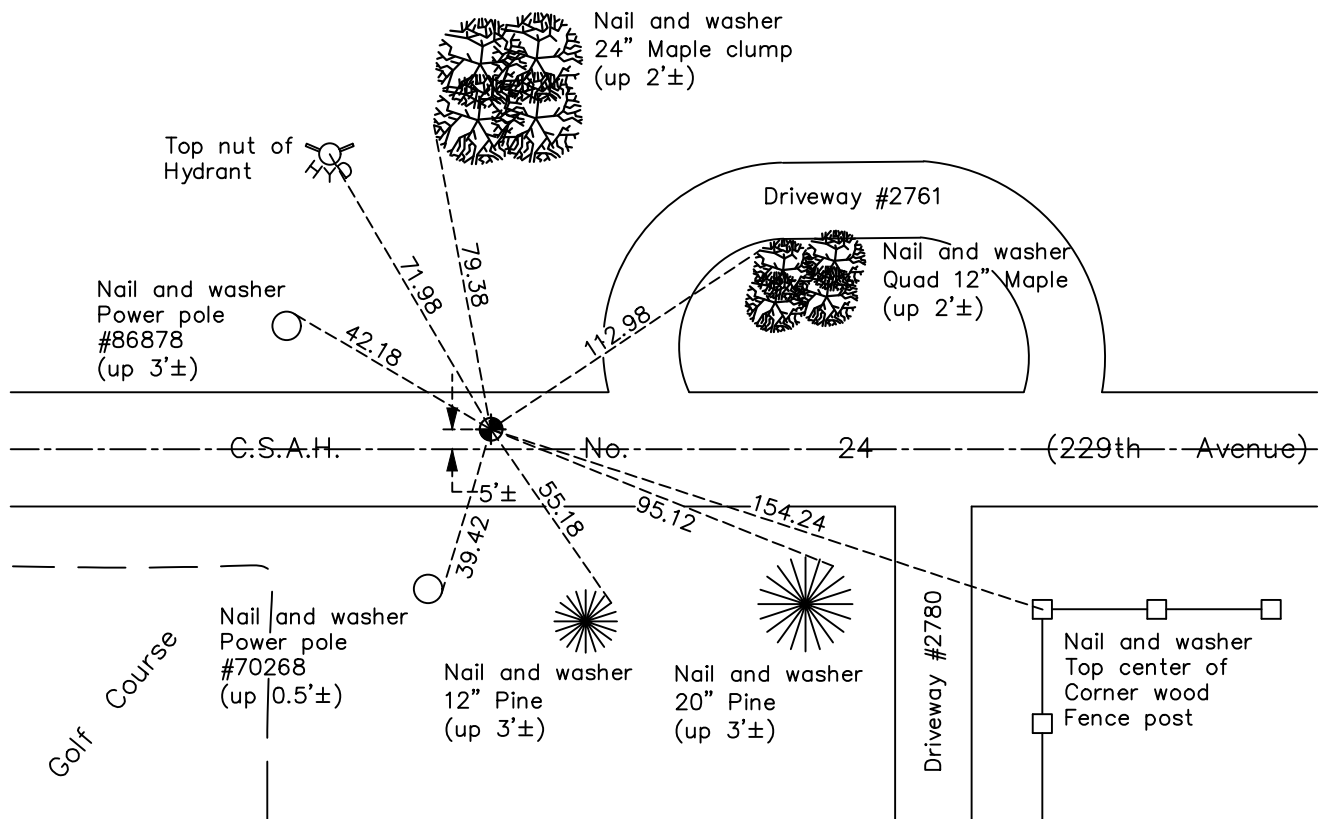
## North 1/4 Corner of Sec. 4 Township 33 Range 24

On the 29th day of July, 1964, the described corner was evidenced by area resurvey

and to perpetuate the location of said corner, at the exact location thereof, a permanent marker was placed consisting of a cast iron monument

AND on the 7th day of December, 2020, said permanent marker was found and the ties were updated

Updated reference ties are as shown below.



Revision Date

04/14/2021

N.A.D. 1983 Coordinates  
(1996 Adjustment)

County Project Coordinates	
Northing	<u>227444.4227</u>
Easting	<u>481908.6788</u>
Date	<u>4/24/01</u>

I hereby certify that this United States public land survey monument record is correct and complete to the best of my knowledge and belief.

*David M Zieglmeier* Date 7/27/21

David Zieglmeier Anoka County Surveyor  
Minnesota License Number 46179

# HISTORY OF GOVERNMENT CORNER

Page No. 8

County of Anoka

State of Minnesota

## North 1/4 Corner of Sec. 4 Township 33 Range 24

### **CORNER HISTORY:**

September 30, 1946 - Harvey Cartwright set online and midway between section corners a granite monument down 0.5'±. Established ties to the monument.

November 22, 1963 - Found one remaining tie which fell on centerline road and fence line extensions from the north and south. Dug down and found nothing.

July 29, 1964 - Set cast iron monument using area resurvey. Updated ties.

July 16, 1965 - Found cast iron monument 1.5'± north of centerline and updated ties.

June 17, 1968 - Found cast iron monument and updated ties.

July 19, 1971 - Found cast iron monument and updated ties.

June 25, 1975 - Found cast iron monument and updated ties.

October 24, 1977 - Found cast iron monument down and raised flush.

June 23, 1978 - Found cast iron monument and updated ties.

July 18, 1981 - Found cast iron monument and updated ties.

August 3, 1984 - Found cast iron monument and updated ties.

July 2, 1992 - Found cast iron monument and updated ties.

June 2, 1997 - Found cast iron monument and updated ties.

April 24, 2001 - Found cast iron monument and updated ties. Established NAD 1983 (1996 adj.) Anoka County project coordinates by static GPS methods.

September 9, 2011 - Found cast iron monument. Verified position by VRS GPS methods. Updated ties.

July 8, 2015 - Found cast iron monument 5'± north of center line, set construction ties, updated corner ties, and verified position by VRS GPS methods prior to road construction. Removed monument.

November 2, 2015 - Set cast iron monument flush after construction using static GPS methods. Updated ties.

April 7, 2017 - Found cast iron monument. Verified position by VRS GPS methods. Updated ties.

December 7, 2020 - Found cast iron monument. Verified position by VRS GPS methods. Updated ties.