

CERTIFICATE OF LOCATION OF GOVERNMENT CORNER

County of Anoka

State of Minnesota

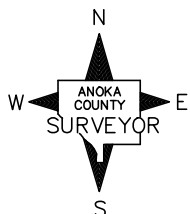
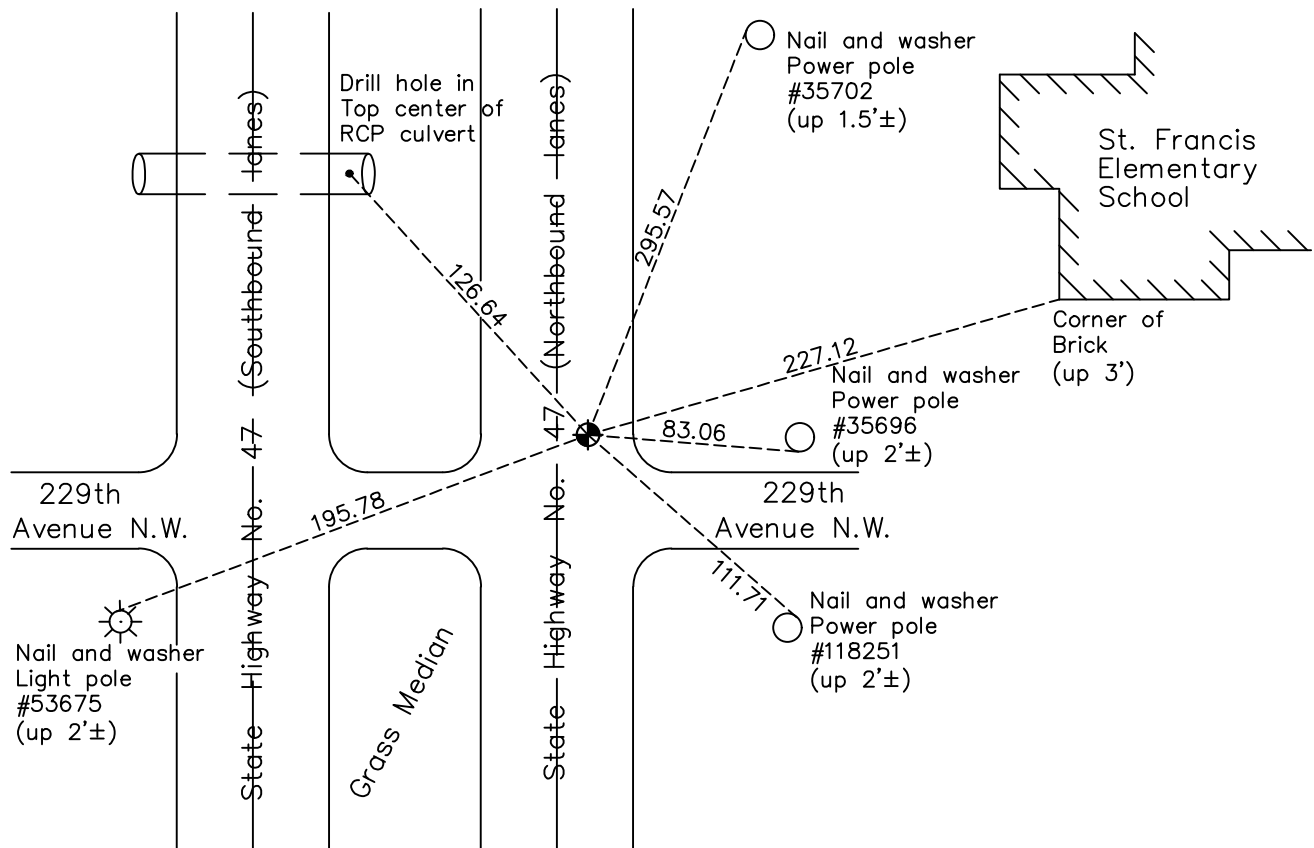
Northwest Corner of Sec. 5 Township 33 Range 24

On the 4th day of September, 1962, the described corner was evidenced by a concrete monument

and to perpetuate the location of said corner, at the exact location thereof, a permanent marker was placed consisting of a cast iron monument

AND on the 19th day of November, 2020, said permanent marker was found down 0.1'± and the ties were updated

Updated reference ties are as shown below.



Revision Date

04/14/2021

N.A.D. 1983 Coordinates
(1996 Adjustment)

County Project Coordinates	
Northing	<u>227450.4220</u>
Easting	<u>474041.2947</u>
Date	<u>3/23/01</u>

I hereby certify that this United States public land survey monument record is correct and complete to the best of my knowledge and belief.

David M Zieglmeier Date 7/27/21

David Zieglmeier Anoka County Surveyor
Minnesota License Number 46179

HISTORY OF GOVERNMENT CORNER

Page No. 12

County of Anoka

State of Minnesota

Northwest Corner of Sec. 5 Township 33 Range 24

CORNER HISTORY:

September 30, 1946 - Harvey Cartwright found a granite monument down 0.8'± and updated the ties.

July 28, 1960 - Found 6" x 8" granite monument down 0.6'± and updated ties.

May 23, 1961 - Found 6" x 6" granite monument and updated ties.

August 8, 1961 - Found granite monument and added additional ties to new brick high school.

September 4, 1962 - Set cast iron monument flush with blacktop road. Updated ties.

July 16, 1965 - Found cast iron monument and updated ties.

June 19, 1968 - Found cast iron monument flush and updated ties.

July 29, 1971 - Found cast iron monument and updated ties.

June 25, 1975 - Found cast iron monument and updated ties.

June 26, 1978 - Found cast iron monument and updated ties.

July 15, 1981 - Found cast iron monument and updated ties.

August 3, 1984 - Found cast iron monument and updated ties.

July 6, 1992 - Found cast iron monument and updated ties.

June 11, 1997 - Found cast iron monument and updated ties.

March 23, 2001 - Found cast iron monument and updated ties. Established NAD 1983 (1996 adj.) Anoka County project coordinates by static GPS methods.

January 12, 2012 - Found cast iron monument with top missing and replaced monument top flush with road. Verified position by VRS GPS methods. Updated ties.

April 25, 2017 - Found cast iron monument down 0.1'±. Verified position by VRS GPS methods. Updated ties.

November 19, 2020 - Found cast iron monument down 0.1'±. Verified position by VRS GPS methods. Updated ties.