

# CERTIFICATE OF LOCATION OF GOVERNMENT CORNER

County of Anoka

State of Minnesota

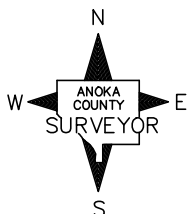
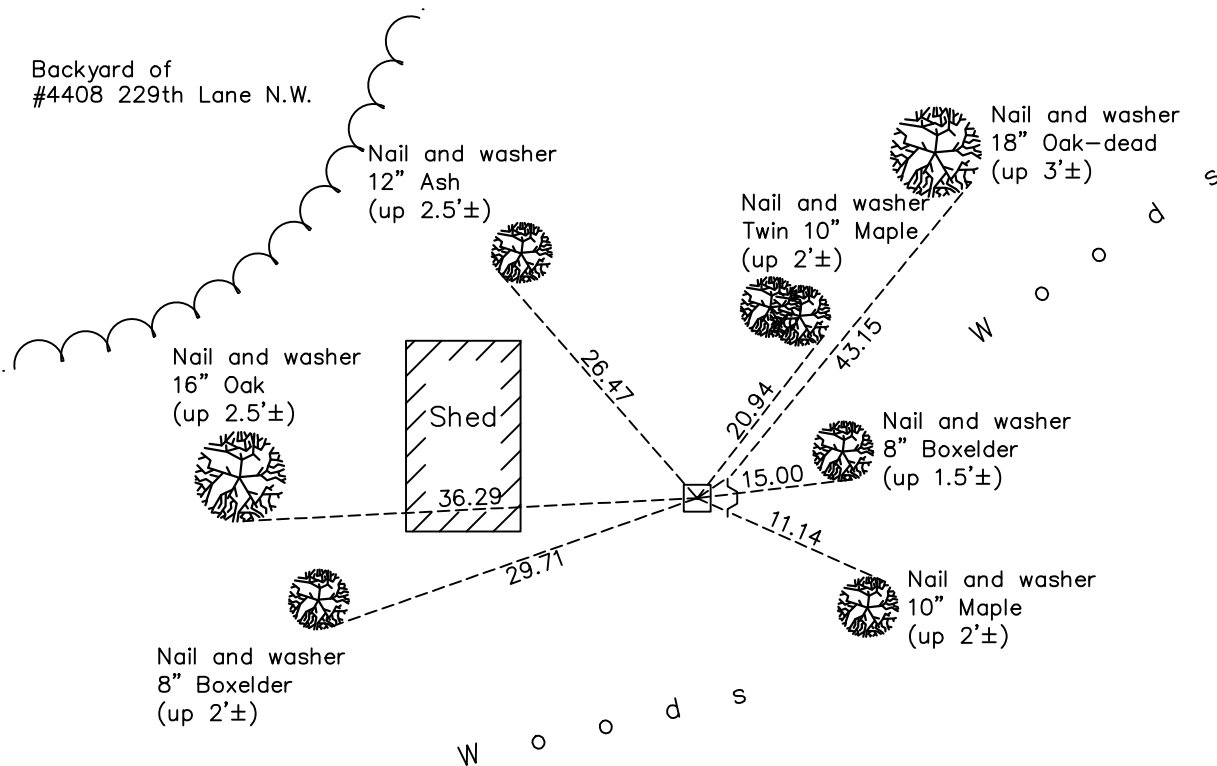
## North $\frac{1}{4}$ Corner of Sec. 6 Township 33 Range 24

On the 2nd day of September, 1965, the described corner was evidenced by a granite monument

and to perpetuate the location of said corner, at the exact location thereof, a permanent marker was placed consisting of the same granite monument with a sign and post on the east side

AND on the 20th day of November, 2020, said permanent marker was found up 0.3'± and the ties were updated

Updated reference ties are as shown below.



Revision Date

04/14/2021

N.A.D. 1983 Coordinates  
(1996 Adjustment)

County Project Coordinates	
Northing	<u>227457.8225</u>
Easting	<u>471400.3506</u>
Date	<u>5/08/01</u>

I hereby certify that this United States public land survey monument record is correct and complete to the best of my knowledge and belief.

*David M Zieglmeier* Date 7/28/21

David Zieglmeier Anoka County Surveyor  
Minnesota License Number 46179

# HISTORY OF GOVERNMENT CORNER

Page No. 12A

County of Anoka

State of Minnesota

North 1/4 Corner of Sec. 6 Township 33 Range 24

## **CORNER HISTORY:**

June 27, 1997 - Found granite monument and updated ties. Set sign and post on east side.

May 8, 2001 - Found granite monument and updated ties. Established NAD 1983 (1996 adj.) Anoka County project coordinates by static GPS methods.

January 13, 2012 - Found granite monument up 0.3'± and updated ties.

April 24, 2017 - Found granite monument up 0.3'± and updated ties.

November 20, 2020 - Found granite monument up 0.3'± and updated ties.