

# CERTIFICATE OF LOCATION OF GOVERNMENT CORNER

County of Anoka

State of Minnesota

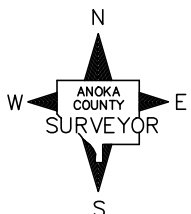
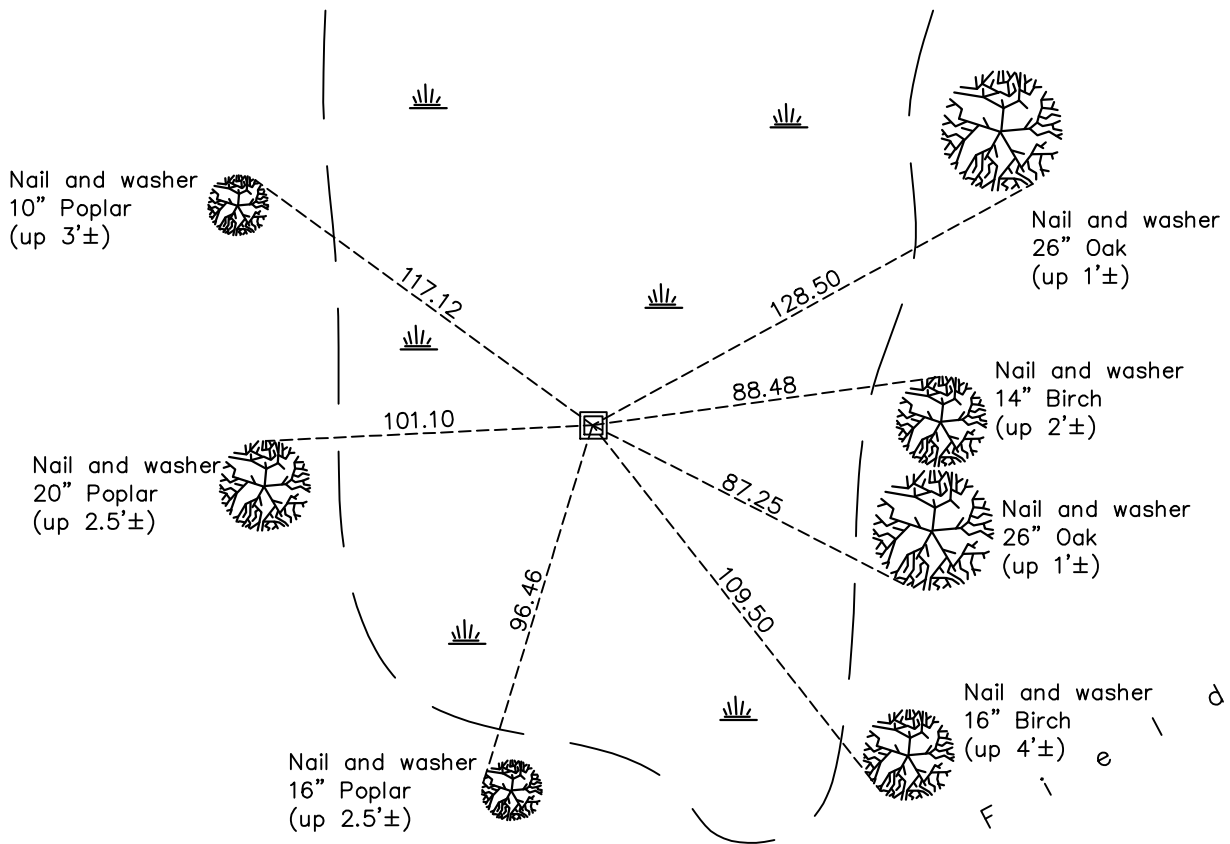
## Northwest Corner of Sec. 6 Township 33 Range 24

On the 19th day of August, 1960, the described corner was evidenced by an 8" X 8" granite monument

and to perpetuate the location of said corner, at the exact location thereof, a permanent marker was placed consisting of a red and white 2" square steel Telspar monument with a sign attached to the south side

AND on the 22nd day of December, 2020, said permanent marker was found up 5.5'± telspar leaning North, ties taken at bottom and the ties were updated

Updated reference ties are as shown below.



Revision Date

5/19/2021

N.A.D. 1983 Coordinates  
(1996 Adjustment)

County Project Coordinates	
Northing	<u>227470.9663</u>
Easting	<u>468690.4389</u>
Date	<u>5/08/01</u>

I hereby certify that this United States public land survey monument record is correct and complete to the best of my knowledge and belief.

*David M Zieglmeier* Date 7/29/21

David Zieglmeier Anoka County Surveyor  
Minnesota License Number 46179

# HISTORY OF GOVERNMENT CORNER

Page No. 12B

County of Anoka

State of Minnesota

## Northwest Corner of Sec. 6 Township 33 Range 24

### **CORNER HISTORY:**

July 10, 1985 - Found red and white iron pipe and updated the ties.

June 20, 1989 - Found red and white iron pipe and updated the ties.

May 14, 1997 - Found red and white iron pipe and updated the ties.

May 8, 2001 - Found red and white iron pipe and updated the ties. Established NAD 1983 (1996 adj.) Anoka County project coordinates by static GPS methods.

January 13, 2012 - Found red and white 2" square steel Telspar monument w/sign attached. Updated ties.

April 25, 2017 - Found red and white 2" square steel Telspar monument up 4.5'± w/sign attached. Updated ties

December 22, 2020 - Found red and white 2" square steel Telspar monument up 4.5'± w/sign attached. Updated ties.