

CERTIFICATE OF LOCATION OF GOVERNMENT CORNER

County of Anoka

State of Minnesota

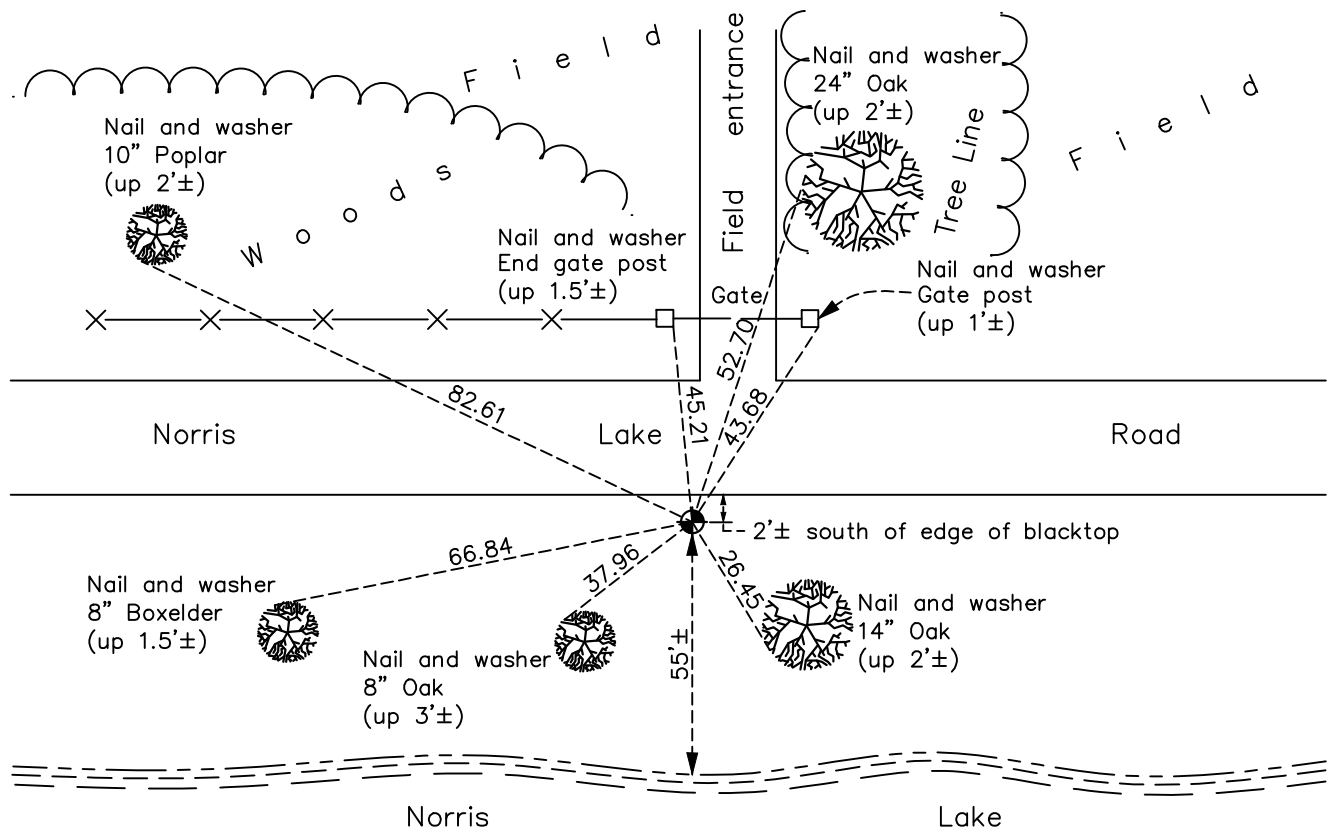
Witness Corner of Sec. 6 Township 33 Range 24
(on west line of section)

On the 15th day of June, 1967, the described corner was evidenced by area resurvey

and to perpetuate the location of said corner, at the exact location thereof, a permanent marker was placed consisting of a cast iron monument

AND on the 4th day of December, 2020, said permanent marker was found down 0.4'± and the ties were updated.

Updated reference ties are as shown below.



Revision Date

12/31/2020

N.A.D. 1983 Coordinates
(1996 Adjustment)

County Project Coordinates	
Northing	225806.9232
Easting	468675.2346
Date	4/20/01

I hereby certify that this United States public land survey monument record is correct and complete to the best of my knowledge and belief.

David M Zieglmeier Date 7/29/21

David Zieglmeier Anoka County Surveyor
Minnesota License Number 46179

HISTORY OF GOVERNMENT CORNER

Page No. 13

County of Anoka

State of Minnesota

Witness Corner of Sec. 6 Township 33 Range 24
(on west line of section)

CORNER HISTORY:

June 15, 1967 - Set cast iron monument down 0.1'± using area resurvey. Established ties to monument.

June 19, 1968 - Found cast iron monument and updated ties.

August 5, 1971 - Found cast iron monument and updated ties.

June 25, 1975 - Found cast iron monument and updated ties.

June 26, 1978 - Found cast iron monument and updated ties.

July 15, 1981 - Found cast iron monument and updated ties.

August 14, 1984 - Found cast iron monument and updated ties.

July 16, 1987 - Found cast iron monument and updated ties.

July 14, 1992 - Found cast iron monument and updated ties.

June 11, 1997 - Found cast iron monument and updated ties.

April 20, 2001 - Established NAD 1983 (1996 adj.) Anoka County project coordinates by static GPS methods.

May 8, 2001 - Found cast iron monument and updated ties.

January 12, 2012 - Found cast iron monument down 0.5'±. Verified position by VRS GPS methods. Updated ties.

April 13, 2017 - Found cast iron monument broken and down 2'±. Checked position by VRS GPS methods and checked corner ties to center fin.

May 8, 2017 - Removed broken monument. Set new cast iron monument down 0.4'± using static GPS methods. Updated ties.

December 4, 2020- Found cast iron monument down 0.4'±. Verified position by VRS GPS methods. Updated ties.