

CERTIFICATE OF LOCATION OF GOVERNMENT CORNER

County of Anoka

State of Minnesota

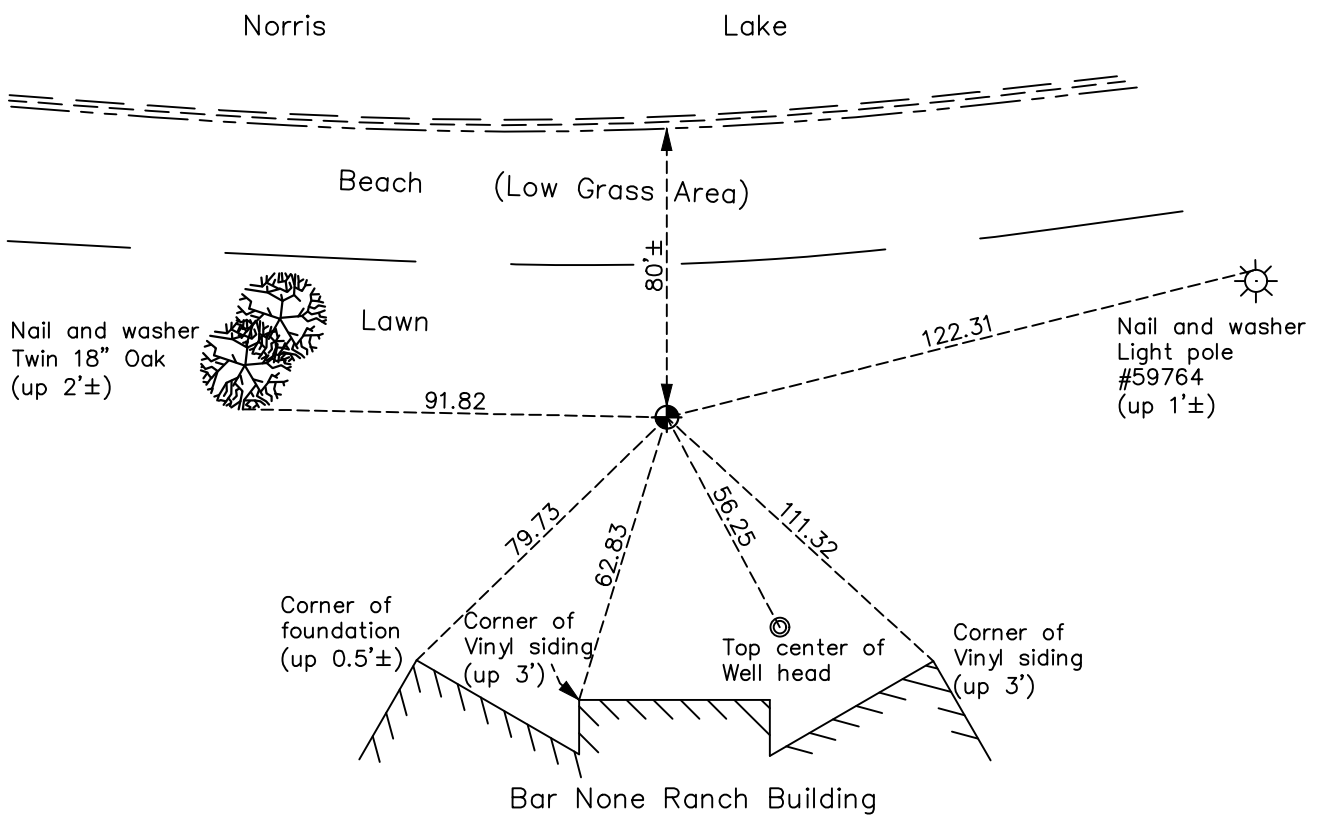
Witness Corner of Sec. 6 Township 33 Range 24
 (on west line of section and south side of lake)

On the 15th day of June, 1967, the described corner was evidenced by area resurvey

and to perpetuate the location of said corner, at the exact location thereof, a permanent marker was placed consisting of a cast iron monument

AND on the 8th day of December, 2020, said permanent marker was found down 0.5'± and the ties were updated

Updated reference ties are as shown below.



Revision Date

01/14/2021

N.A.D. 1983 Coordinates
(1996 Adjustment)

County Project Coordinates	
Northing	<u>224593.4749</u>
Easting	<u>468663.5264</u>
Date	<u>4/26/01</u>

I hereby certify that this United States public land survey monument record is correct and complete to the best of my knowledge and belief.

David M Zieglmeier Date 7/29/21

David Zieglmeier Anoka County Surveyor
Minnesota License Number 46179

HISTORY OF GOVERNMENT CORNER

Page No. 14

County of Anoka

State of Minnesota

Witness Corner of Sec. 6 Township 33 Range 24
(on west line of section and south side of lake)

CORNER HISTORY:

June 15, 1967 - Set cast iron monument using area resurvey. Established ties to monument.

June 21, 1968 - Found cast iron monument and updated ties.

July 21, 1971 - Found cast iron monument and updated ties.

June 25, 1975 - Found cast iron monument and updated ties.

June 26, 1978 - Found cast iron monument and updated ties.

July 24, 1981 - Found cast iron monument and updated ties.

August 14, 1984 - Found cast iron monument and updated ties.

July 16, 1987 - Found cast iron monument and updated ties.

July 6, 1992 - Found cast iron monument and updated ties.

June 11, 1997 - Found cast iron monument and updated ties.

April 26, 2001 - Found cast iron monument and updated ties. Established NAD 1983 (1996 adj.) Anoka County project coordinates by static GPS methods.

January 25, 2012 - Found cast iron monument down 0.5'±. Verified position by VRS GPS methods. Updated ties.

April 19, 2017 - Found cast iron monument down 0.5'± and updated ties.

December 8, 2020 - Found cast iron monument down 0.5'± and updated ties.