

# CERTIFICATE OF LOCATION OF GOVERNMENT CORNER

County of Anoka

State of Minnesota

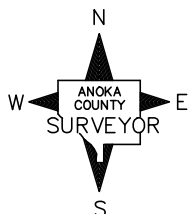
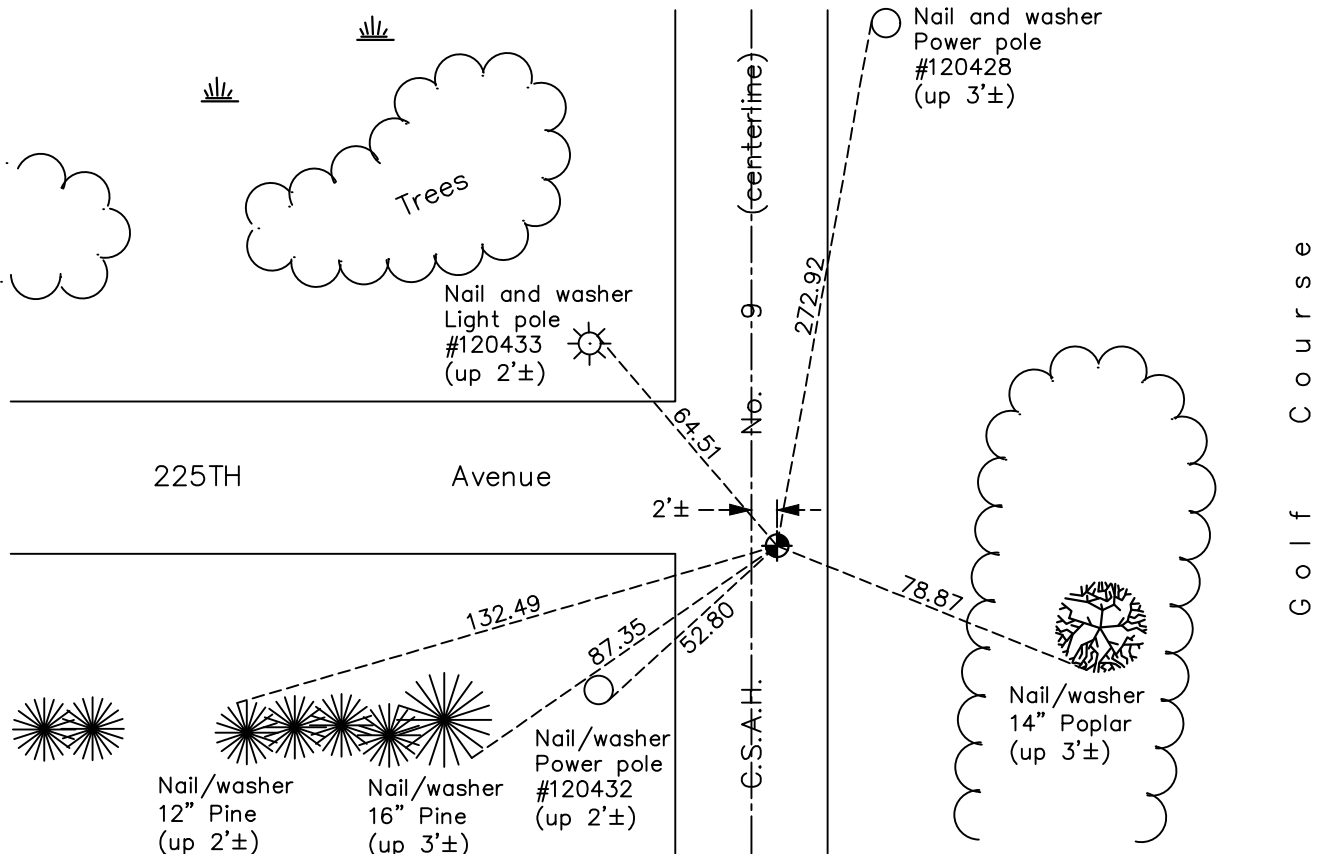
## East 1/4 Corner of Sec. 5 Township 33 Range 24

On the 4th day of June, 1965, the described corner was evidenced by unknown

and to perpetuate the location of said corner, at the exact location thereof, a permanent marker was placed consisting of a cast iron monument

AND on the 28th day of October, 2019, said permanent marker was Reset with a cast iron monument flush and the ties were updated

Updated reference ties are as shown below.



Revision Date

12/3/19

N.A.D. 1983 Coordinates  
(1996 Adjustment)

County Project Coordinates	
Northing	<u>224905.1946</u>
Easting	<u>479235.4401</u>
Date	<u>4/24/01</u>

I hereby certify that this United States public land survey monument record is correct and complete to the best of my knowledge and belief.

*David M Zieglmeier* Date 7/29/21

David Zieglmeier Anoka County Surveyor  
Minnesota License Number 46179

# HISTORY OF GOVERNMENT CORNER

Page No. 17

County of Anoka

State of Minnesota

East 1/4 Corner of Sec. 5 Township 33 Range 24

## **CORNER HISTORY:**

September 30, 1946 - Set concrete monument and established ties to concrete monument.

November 22, 1963 - Found all ties to be gone.

June 4, 1965 - Set cast iron monument on line between section corners at prorated government distances. Established ties to cast iron monument.

June 17, 1968 - Found cast iron monument flush and updated ties.

July 19, 1971 - Found cast iron monument and updated ties.

June 26, 1975 - Found cast iron monument and updated ties.

June 27, 1978 - Found cast iron monument and updated ties.

July 15, 1981 - Found cast iron monument and updated ties.

August 3, 1984 - Found cast iron monument and updated ties.

July 21, 1987 - Found cast iron monument and updated ties.

July 6, 1992 - Found cast iron monument and updated ties.

June 3, 1997 - Found cast iron monument and updated ties.

April 24, 2001 - Found cast iron monument, established NAD 1983 (1996 adj.) Anoka County project coordinates by static GPS methods and updated ties.

January 31, 2012 - Found cast iron monument down 0.2'±, verified position by VRS GPS methods and updated ties.

April 11, 2017 - Found cast iron monument down 0.2'±, verified position by VRS GPS methods and updated ties.

June 13, 2019 - Found cast iron monument down 0.2'±, verified position by VRS GPS methods and updated ties prior to road construction. Removed monument.

October 28, 2019 - Set cast iron monument flush after road construction using static GPS methods. Verified position by VRS GPS methods and updated ties.