

CERTIFICATE OF LOCATION OF GOVERNMENT CORNER

County of Anoka

State of Minnesota

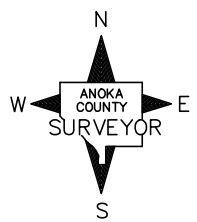
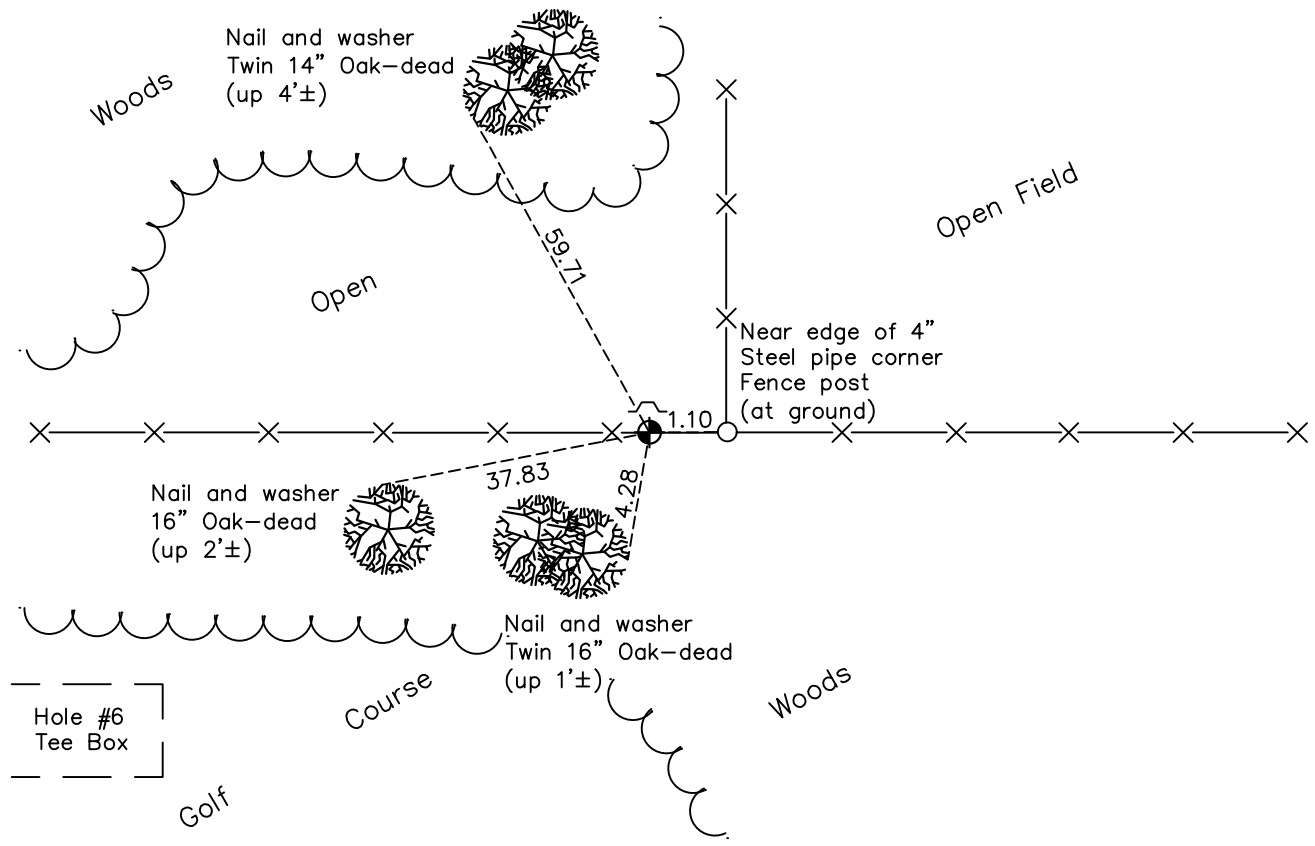
West 1/4 Corner of Sec. 3 Township 33 Range 24

On the 8th day of December, 1970, the described corner was evidenced by area resurvey

and to perpetuate the location of said corner, at the exact location thereof, a permanent marker was placed consisting of a cast iron monument with a sign and post on the north side

AND on the 7th day of December, 2020, said permanent marker was found down 0.3'± with a sign and post on the north side and the ties were updated.

Updated reference ties are as shown below.



Revision Date
01/14/2021

N.A.D. 1983 Coordinates
(1996 Adjustment)

County Project Coordinates	
Northing	<u>224838.9643</u>
Easting	<u>484490.3176</u>
Date	<u>4/24/01</u>

I hereby certify that this United States public land survey monument record is correct and complete to the best of my knowledge and belief.

David M Zieglmeier Date 7/29/21

David Zieglmeier Anoka County Surveyor
Minnesota License Number 46179

HISTORY OF GOVERNMENT CORNER

Page No. 18

County of Anoka

State of Minnesota

West 1/4 Corner of Sec. 3 Township 33 Range 24

CORNER HISTORY:

December 8, 1970 - Set cast iron monument using area resurvey. Established ties to monument. Set sign and post 0.5'± north of monument.

August 13, 1971 - Found cast iron monument and updated ties.

June 26, 1975 - Found cast iron monument and updated ties.

June 27, 1978 - Found cast iron monument and updated ties.

July 29, 1981 - Found cast iron monument and updated ties.

August 16, 1984 - Found cast iron monument and updated ties.

June 12, 1997 - Found cast iron monument and updated ties.

April 24, 2001 - Found cast iron monument and updated ties. Established NAD 1983 (1996 adj.) Anoka County project coordinates by static GPS methods.

September 9, 2011 - Found cast iron monument and updated ties. Replaced sign and post 3/30/2012.

April 7, 2017 - Found cast iron monument down 0.3'± with a sign and post on the north side. Updated ties.

December 7, 2020 - Found cast iron monument down 0.3'± with a sign and post on the north side. Updated ties.