

CERTIFICATE OF LOCATION OF GOVERNMENT CORNER

County of Anoka

State of Minnesota

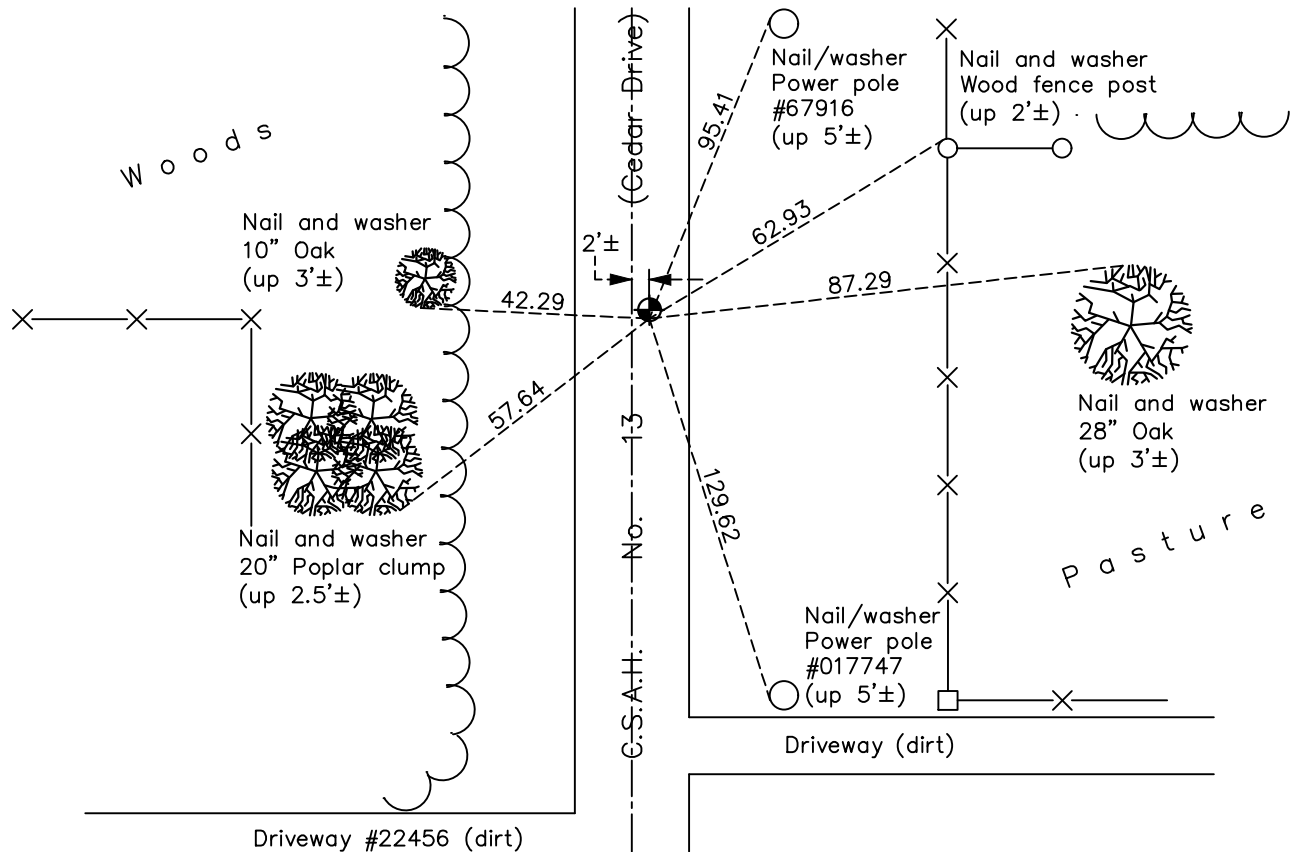
East 1/4 Corner of Sec. 2 Township 33 Range 24

On the 26th day of December, 1969, the described corner was evidenced by area resurvey

and to perpetuate the location of said corner, at the exact location thereof, a permanent marker was placed consisting of a cast iron monument

AND on the 11th day of November, 2019, said permanent marker was Reset with a cast iron monument flush and the ties were updated.

Updated reference ties are as shown below.



Revision Date

12/2/19

N.A.D. 1983 Coordinates
(1996 Adjustment)

County Project Coordinates	
Northing	<u>224822.0922</u>
Easting	<u>495043.3704</u>
Date	<u>3/19/01</u>

I hereby certify that this United States public land survey monument record is correct and complete to the best of my knowledge and belief.

David M Zieglmeier Date 7/29/21

David Zieglmeier Anoka County Surveyor
Minnesota License Number 46179

HISTORY OF GOVERNMENT CORNER

Page No. 20

County of Anoka

State of Minnesota

East 1/4 Corner of Sec. 2 Township 33 Range 24

CORNER HISTORY:

August 13, 1965 - Set cast iron monument down 0.4'± using area resurvey and established ties to monument.

November 3, 1967 - Set P.K. nail

June 12, 1968 - Reset cast iron monument flush after being wiped out by road construction. Updated ties.

December 26, 1969 - Set P.K. nail using area resurvey and updated ties.

July 21, 1971 - Found P.K. nail and replaced with a cast iron monument. Updated ties.

August 30, 1972 - Found cast iron monument and raised flush.

June 26, 1975 - Found cast iron monument and updated ties.

June 27, 1978 - Found cast iron monument and updated ties.

July 16, 1981 - Found cast iron monument and updated ties.

August 8, 1984 - Found cast iron monument and updated ties.

July 20, 1987 - Found cast iron monument and updated ties.

February 21, 1992 - Found cast iron monument and updated ties.

September 10, 1996 - Found cast iron monument and updated ties.

June 2, 1997 - Found cast iron monument and updated ties.

March 19, 2001 - Found cast iron monument, established NAD 1983 (1996 adj.) Anoka County project coordinates by static GPS methods and updated ties.

September 6, 2011 - Found cast iron monument, verified position by VRS GPS methods and updated ties.

March 28, 2017 - Found cast iron monument flush, verified position by VRS GPS methods and updated ties.

June 17, 2019 - Found cast iron monument, verified position by VRS GPS methods and updated ties prior to road construction. Removed monument.

November 11, 2019 - Reset cast iron monument flush using static GPS methods. Verified position by VRS GPS methods and updated ties.