

# CERTIFICATE OF LOCATION OF GOVERNMENT CORNER

County of Anoka

State of Minnesota

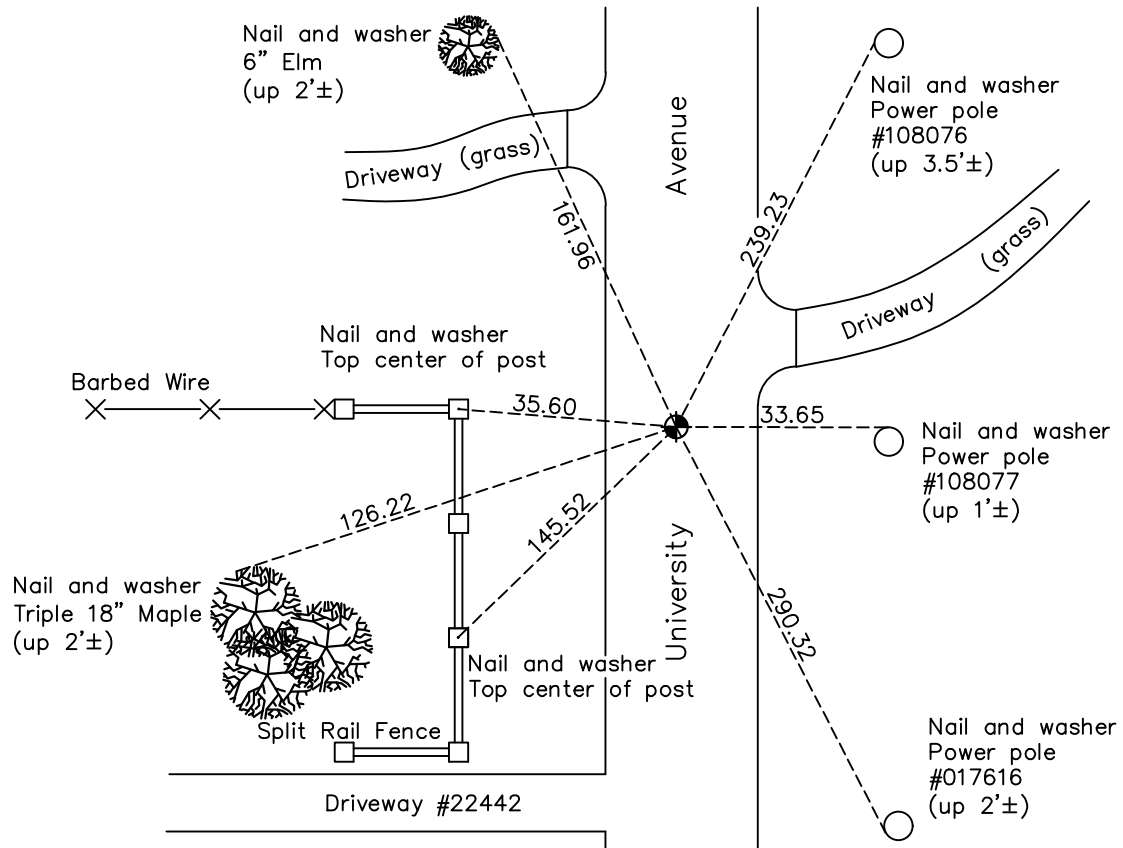
## East 1/4 Corner of Sec. 1 Township 33 Range 24

On the 8th day of April, 1969, the described corner was evidenced by area resurvey

and to perpetuate the location of said corner, at the exact location thereof, a permanent marker was placed consisting of a cast iron monument

AND on the 18th day of November, 2020, said permanent marker was found flush with the surface and the ties were updated

Updated reference ties are as shown below.



Revision Date

01/14/2021

N.A.D. 1983 Coordinates  
(1996 Adjustment)

County Project Coordinates	
Northing	<u>224886.4605</u>
Easting	<u>500315.8819</u>
Date	<u>2/23/01</u>

I hereby certify that this United States public land survey monument record is correct and complete to the best of my knowledge and belief.

*David M Zieglmeier* Date 7/29/21

David Zieglmeier Anoka County Surveyor  
Minnesota License Number 46179

# HISTORY OF GOVERNMENT CORNER

Page No. 21

County of Anoka

State of Minnesota

East 1/4 Corner of Sec. 1 Township 33 Range 24

## **CORNER HISTORY:**

April 8, 1969 - Set cast iron monument down 0.5'± using area resurvey. Established ties to monument.

July 19, 1971 - Found cast iron monument and updated ties.

June 26, 1975 - Found cast iron monument and updated ties.

June 27, 1978 - Found cast iron monument and updated ties.

July 16, 1981 - Found cast iron monument and updated ties.

August 8, 1984 - Found cast iron monument and updated ties.

June 16, 1992 - Found cast iron monument and updated ties.

May 30, 1997 - Found cast iron monument and updated ties.

May 22, 2000 - Found cast iron monument and updated ties.

February 23, 2001 - Established NAD 1983 (1996 adj.) Anoka County project coordinates by static GPS methods.

August 16, 2005 - Found cast iron monument and updated ties.

August 30, 2011 - Found cast iron monument. Verified position by VRS GPS methods. Updated ties.

March 27, 2017 - Found cast iron monument flush. Verified position by VRS GPS methods. Updated ties.

November 18, 2020 - Found cast iron monument flush. Verified position by VRS GPS methods. Updated ties.