

# CERTIFICATE OF LOCATION OF GOVERNMENT CORNER

County of Anoka

State of Minnesota

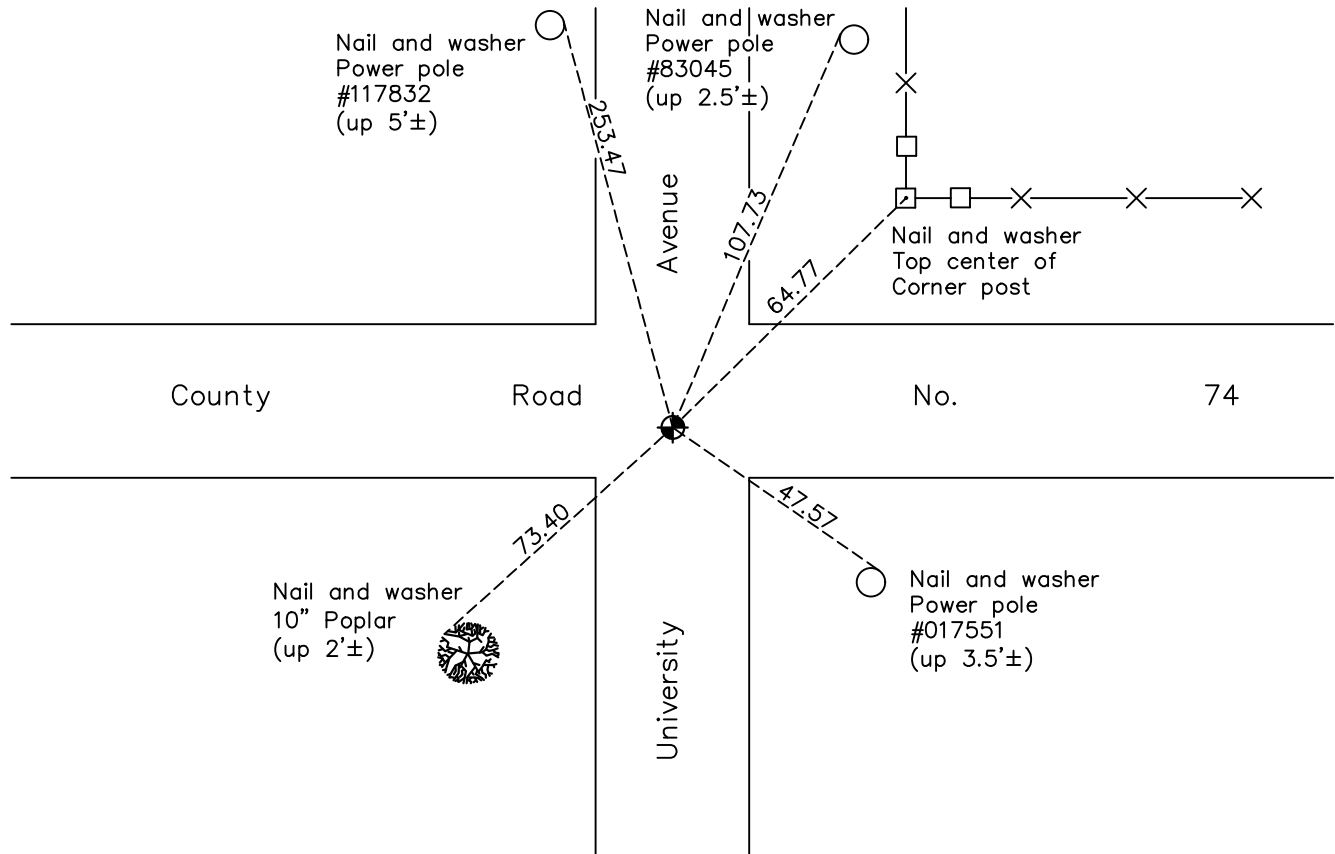
## Northeast Corner of Sec. 12 Township 33 Range 24

On the 23rd day of July, 1962, the described corner was evidenced by area resurvey

and to perpetuate the location of said corner, at the exact location thereof, a permanent marker was placed consisting of a cast iron monument

AND on the 18th day of May, 2023, said permanent marker was set cast iron monument after road construction, verified position using RTK GPS methods. Updated ties.

Updated reference ties are as shown below.



Revision Date  
6/1/2023

N.A.D. 1983 Coordinates  
 (1996 Adjustment)

County Project Coordinates	
Northing	<u>222258.2070</u>
Easting	<u>500287.4683</u>
Date	<u>2/21/01</u>

I hereby certify that this United States public land survey monument record is correct and complete to the best of my knowledge and belief.

David Zieglmeier Date 6/28/23

David Zieglmeier Anoka County Surveyor  
 Minnesota License Number 46179

# HISTORY OF GOVERNMENT CORNER

Page No. 21A

County of Anoka

State of Minnesota

## Northeast Corner of Sec. 12 Township 33 Range 24

### **CORNER HISTORY:**

6/12/68, 8/7/74, 6/29/77, 6/10/81, 6/12/84, 6/1/87, 8/6/92, 5/30/97 - Found cast iron monument and updated ties.

May 24, 1999 - Found cast iron monument and set construction ties prior to road construction. Removed monument. Set cast iron monument and updated ties after road construction.

May 25, 2000 - Found cast iron monument and updated ties.

February 21, 2001 - Found cast iron monument and updated ties. Established NAD 1983 (1996 adj.) Anoka County project coordinates by static GPS methods.

8/30/11, 3/27/17, 11/19/20 - Found cast iron monument. Verified position by VRS GPS methods. Updated ties.

May 18, 2023 - Set cast iron monument after road construction, verified position using RTK GPS methods. Updated ties. Job no. 22-131