

CERTIFICATE OF LOCATION OF GOVERNMENT CORNER

County of Anoka

State of Minnesota

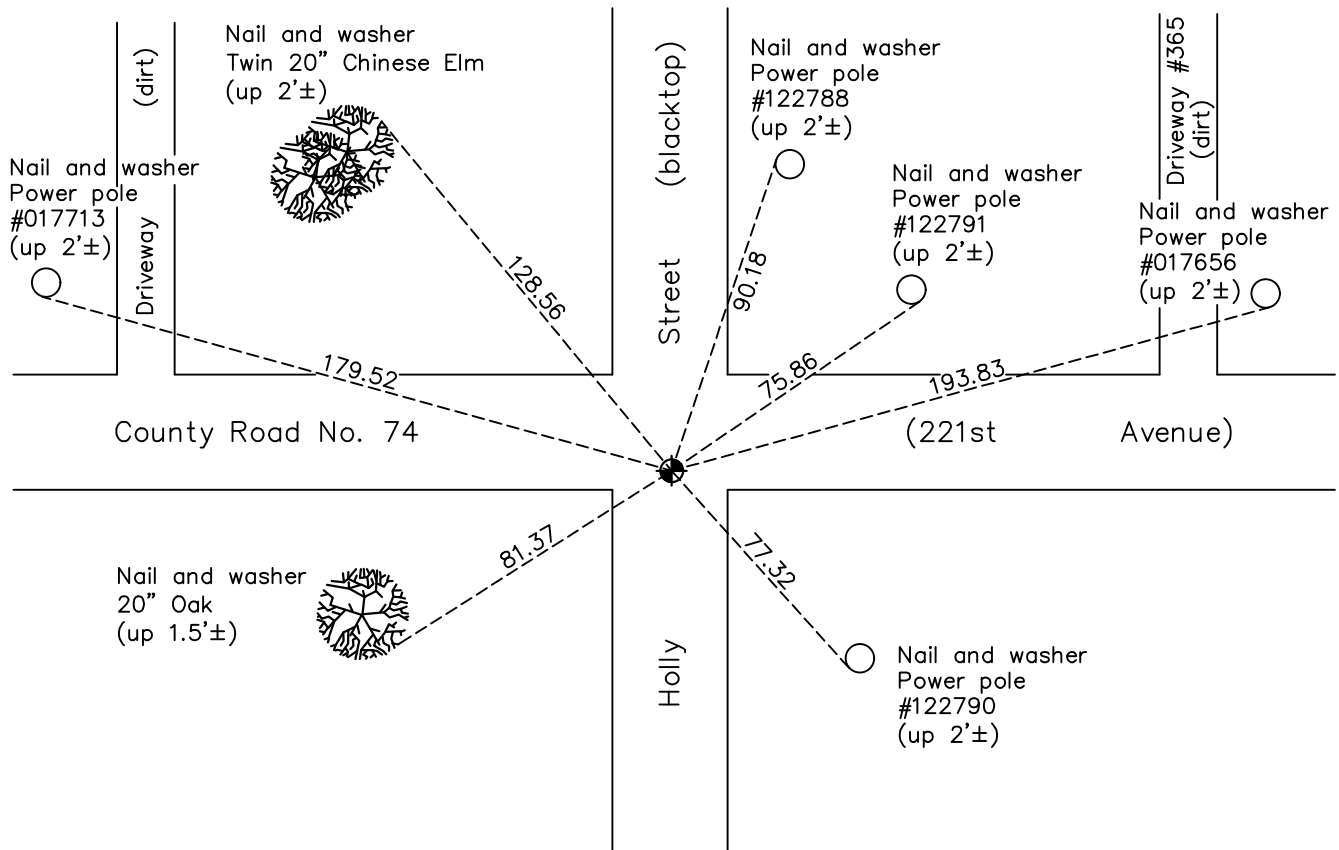
North 1/4 Corner of Sec. 12 Township 33 Range 24

On the 13th day of August, 1965, the described corner was evidenced by area resurvey

and to perpetuate the location of said corner, at the exact location thereof, a permanent marker was placed consisting of a cast iron monument

AND on the 19th day of May, 2023, said permanent marker was set cast iron monument after road construction, verified position using RTK GPS methods. Updated ties.

Updated reference ties are as shown below.



Revision Date
 6/1/2023

N.A.D. 1983 Coordinates
 (1996 Adjustment)

County Project Coordinates	
Northing	222221.1729
Easting	497651.4601
Date	2/21/01

I hereby certify that this United States public land survey monument record is correct and complete to the best of my knowledge and belief.
David Zieglmeier Date 6/28/23
 David Zieglmeier Anoka County Surveyor
 Minnesota License Number 46179

HISTORY OF GOVERNMENT CORNER

Page No. 22

County of Anoka

State of Minnesota

North 1/4 Corner of Sec. 12 Township 33 Range 24

CORNER HISTORY:

August 13, 1965 - Set cast iron monument flush using area resurvey. Established ties to monument.

June 12, 1968 - Found cast iron monument and updated ties.

June 17, 1971 - Moved cast iron monument 2.93 feet East. Updated ties.

June 26, 1975 - Found cast iron monument down and raised flush. Updated ties.

6/27/78, 7/17/81, 8/8/84, 7/16/87, 7/1/92, 5/30/97 - Found cast iron monument and updated ties.

May 24, 1999 - Found cast iron monument and set construction ties prior to construction. Removed monument.

August 30, 1999 - Set cast iron monument flush after road construction and updated ties.

February 21, 2001 - Found cast iron monument and updated ties. Established NAD 1983 (1996 adj.) Anoka County project coordinates by static GPS methods.

8/31/11, 3/28/17, 11/19/20 - Found cast iron monument flush. Verified position by VRS GPS methods. Updated ties.

May 19, 2023 - Set cast iron monument after road construction, verified position using RTK GPS methods. Updated ties. Job no. 22-131