

CERTIFICATE OF LOCATION OF GOVERNMENT CORNER

County of Anoka

State of Minnesota

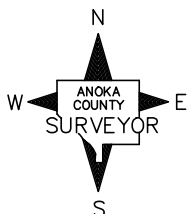
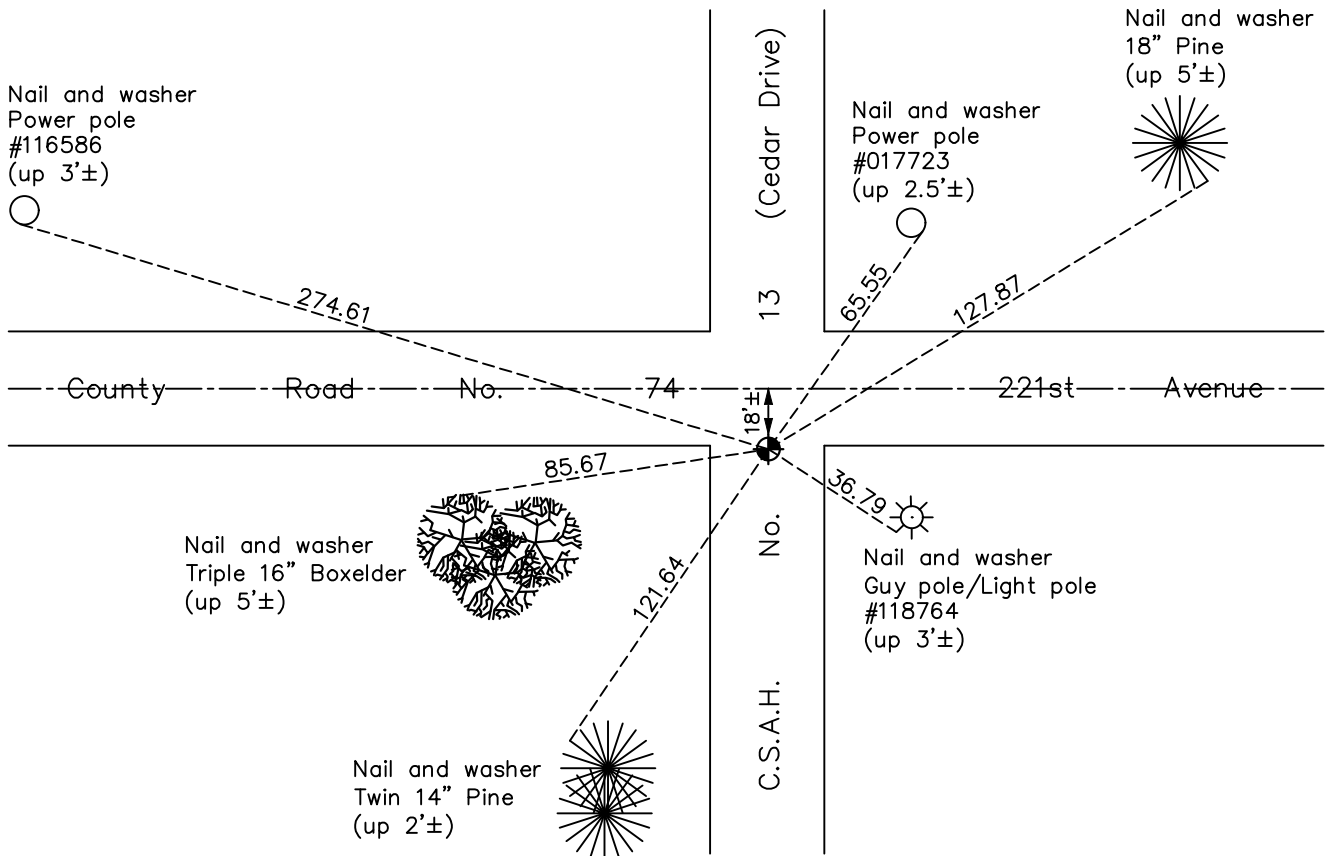
Northeast Corner of Sec. 11 Township 33 Range 24

On the 16th day of August, 1965, the described corner was evidenced by area resurvey

and to perpetuate the location of said corner, at the exact location thereof, a permanent marker was placed consisting of a cast iron monument

AND on the 4th day of November, 2019, said permanent marker was Reset with a cast iron monument flush and the ties were updated

Updated reference ties are as shown below.



Revision Date

12/2/19

N.A.D. 1983 Coordinates
(1996 Adjustment)

| County Project Coordinates | |
|----------------------------|--------------------|
| Northing | <u>222184.0399</u> |
| Easting | <u>495015.3080</u> |
| Date | <u>2/21/01</u> |

I hereby certify that this United States public land survey monument record is correct and complete to the best of my knowledge and belief.

David M Zieglmeier Date 7/29/21

David Zieglmeier Anoka County Surveyor
Minnesota License Number 46179

HISTORY OF GOVERNMENT CORNER

Page No. 23

County of Anoka

State of Minnesota

Northeast Corner of Sec. 11 Township 33 Range 24

CORNER HISTORY:

August 16, 1965 - Set cast iron monument down 0.4'± using area resurvey and established ties to monument.

November 3, 1967 - Set P.K. nail.

June 12, 1968 - Reset cast iron monument flush after being wiped out by road construction. Updated ties.

July 20, 1971 - Found cast iron monument and updated ties.

August 30, 1972 - Raised cast iron monument flush.

June 26, 1975 - Found cast iron monument and updated ties.

June 27, 1978 - Found cast iron monument and updated ties.

July 17, 1981 - Found cast iron monument and updated ties.

August 7, 1984 - Found cast iron monument and updated ties.

February 21, 1992 - Found cast iron monument and updated ties.

August 26, 1996 - Found cast iron monument and set construction ties prior to road construction.

May 28, 1997 - Found cast iron monument and updated ties.

February 21, 2001 - Found cast iron monument, established NAD 1983 (1996 adj.) Anoka County project coordinates by static GPS methods and updated ties.

August 31, 2011 - Found cast iron monument, verified position by VRS GPS methods and updated ties.

March 28, 2017 - Found cast iron monument flush, verified position by VRS GPS methods and updated ties.

June 17, 2019 - Found cast iron monument flush, verified position by VRS GPS methods and updated ties prior to road construction. Removed monument.

November 4, 2019 - Set cast iron monument flush using static GPS methods after road construction. Verified position by VRS GPS methods and updated ties.