

CERTIFICATE OF LOCATION OF GOVERNMENT CORNER

County of Anoka

State of Minnesota

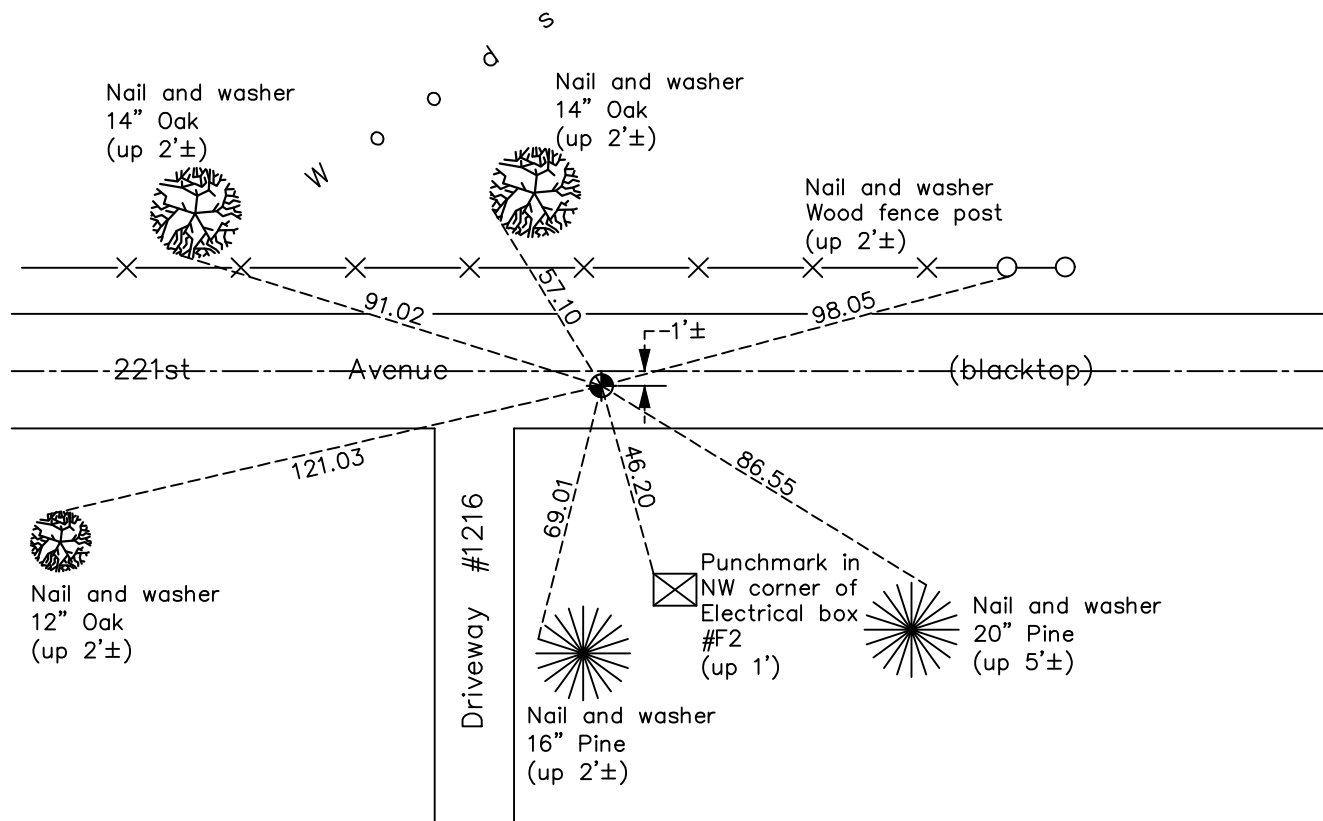
North 1/4 Corner of Sec. 11 Township 33 Range 24

On the 13th day of August, 1965, the described corner was evidenced by area resurvey

and to perpetuate the location of said corner, at the exact location thereof, a permanent marker was placed consisting of a cast iron monument

AND on the 7th day of July, 2020, said permanent marker was Replaced after const. flush and the ties were updated

Updated reference ties are as shown below.



Revision Date

05/20/2021

N.A.D. 1983 Coordinates
(1996 Adjustment)

County Project Coordinates	
Northing	222184.3850
Easting	492360.4344
Date	3/19/01

I hereby certify that this United States public land survey monument record is correct and complete to the best of my knowledge and belief.

David M Zieglmeier Date 7/29/21

David Zieglmeier Anoka County Surveyor
Minnesota License Number 46179

HISTORY OF GOVERNMENT CORNER

Page No. 24

County of Anoka

State of Minnesota

North 1/4 Corner of Sec. 11 Township 33 Range 24

CORNER HISTORY:

August 13, 1965 - Set cast iron monument down 0.4'± using area resurvey. Established ties to monument.

June 12, 1968 - Found cast iron monument and updated ties.

July 20, 1971 - Found cast iron monument and updated ties.

June 26, 1975 - Found cast iron monument and updated ties.

June 27, 1978 - Found cast iron monument and updated ties.

July 23, 1981 - Found cast iron monument and updated ties.

August 8, 1984 - Found cast iron monument and updated ties.

July 16, 1987 - Found cast iron monument and updated ties.

July 1, 1992 - Found cast iron monument and updated ties.

June 2, 1997 - Found cast iron monument and updated ties.

March 19, 2001 - Found cast iron monument and updated ties. Established NAD 1983 (1996 adj.) Anoka County project coordinates by static GPS methods.

April 1, 2002 - Found cast iron monument. Set construction ties and updated corner ties prior to road construction. Removed monument. (unknown reset date)

September 7, 2011 - Found cast iron monument. Verified position by VRS GPS methods. Updated ties.

March 30, 2017 - Found cast iron monument flush. Verified position by VRS GPS methods. Updated ties.

July 7, 2020 - Replaced cast iron monument flush after road construction. Verified position by VRS GPS methods. Updated ties.