

CERTIFICATE OF LOCATION OF GOVERNMENT CORNER

County of Anoka

State of Minnesota

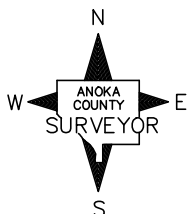
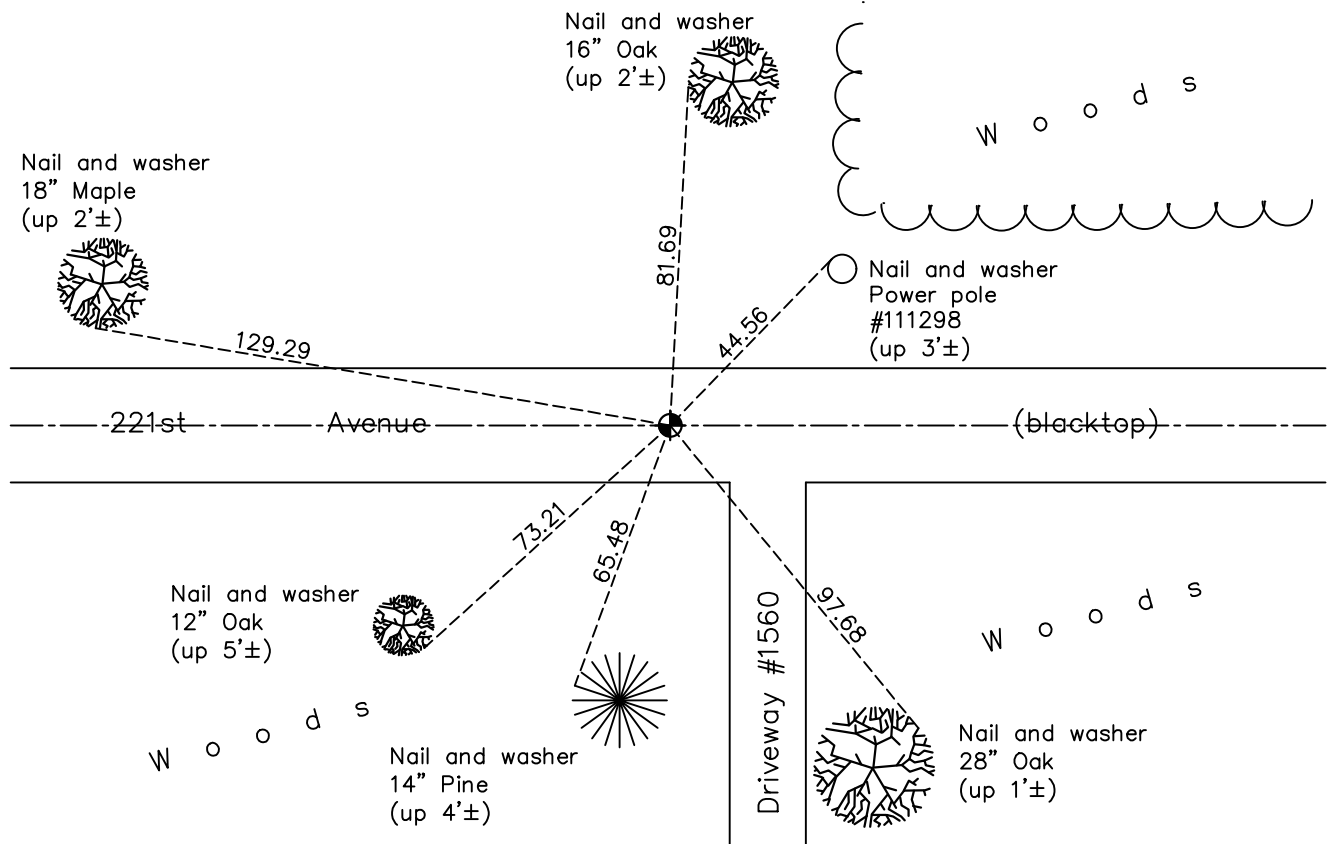
Northeast Corner of Sec. 10 Township 33 Range 24

On the 5th day of March, 1962, the described corner was evidenced by a granite monument

and to perpetuate the location of said corner, at the exact location thereof, a permanent marker was placed consisting of a cast iron monument

AND on the 7th day of July, 2020, said permanent marker was Replaced after const. flush, and the ties were updated

Updated reference ties are as shown below.



Revision Date

05/20/2021

N.A.D. 1983 Coordinates
(1996 Adjustment)

County Project Coordinates	
Northing	<u>222184.4639</u>
Easting	<u>489705.3260</u>
Date	<u>4/20/01</u>

I hereby certify that this United States public land survey monument record is correct and complete to the best of my knowledge and belief.

David M Zieglmeier Date 7/29/21

David Zieglmeier Anoka County Surveyor
Minnesota License Number 46179

HISTORY OF GOVERNMENT CORNER

Page No. 25

County of Anoka

State of Minnesota

Northeast Corner of Sec. 10 Township 33 Range 24

CORNER HISTORY:

December 20, 1944 - Harvey Cartwright set a concrete monument using line between old post of tree as set by owner when section corner stake was in place (old stake graded out). Updated ties to concrete monument.

July 27, 1960 - Found granite monument with top broken off down 2'±, being 10'± West and 3'± North of concrete monument set by Cratwright in 1944. Updated ties to granite monument.

March 5, 1962 - Found granite monument w/top broken off down 2'±. Set 3/4" iron pipe on top of granite down 0.2'± from road surface (granite set around 1900-1910). Updated ties. Also found Cartwright 4" square concrete monument w/top broken off down 0.2'± and updated ties (concrete set around 1944).

July 16, 1965 - Found granite monument and concrete monument and updated ties to both.

June 12, 1968 - Found granite monument and concrete monument and updated ties to both.

July 20, 1971 - Found granite monument and concrete monument and updated ties to both.

June 26, 1975 - Found granite monument and concrete monument and updated ties to both.

June 27, 1978 - Found granite monument and concrete monument and updated ties to both.

July 23, 1981 - Found granite monument and concrete monument and updated ties to both.

August 8, 1984 - Found granite monument and concrete monument and updated ties to both.

July 16, 1987 - Found granite monument and concrete monument. Updated ties to granite monument only.

July 1, 1992 - Found granite monument and concrete monument. Updated ties to granite monument only.

June 2, 1997 - Found granite monument and concrete monument. Updated ties to granite monument only.

April 20, 2001 - Established NAD 1983 (1996 adj.) Anoka County project coordinates by static GPS methods.

April 1, 2002 - Found granite monument down 2'±, set construction ties and updated corner ties.

September 7, 2011 - Found cast iron monument (unknown set date). Verified position by VRS GPS methods. Updated ties.

March 31, 2017 - Found cast iron monument. Verified position by VRS GPS methods. Updated ties.

July 7, 2020 - Replaced cast iron monument flush after road construction. Verified position by VRS GPS methods. Updated ties.