

CERTIFICATE OF LOCATION OF GOVERNMENT CORNER

County of Anoka

State of Minnesota

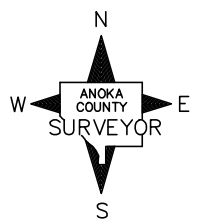
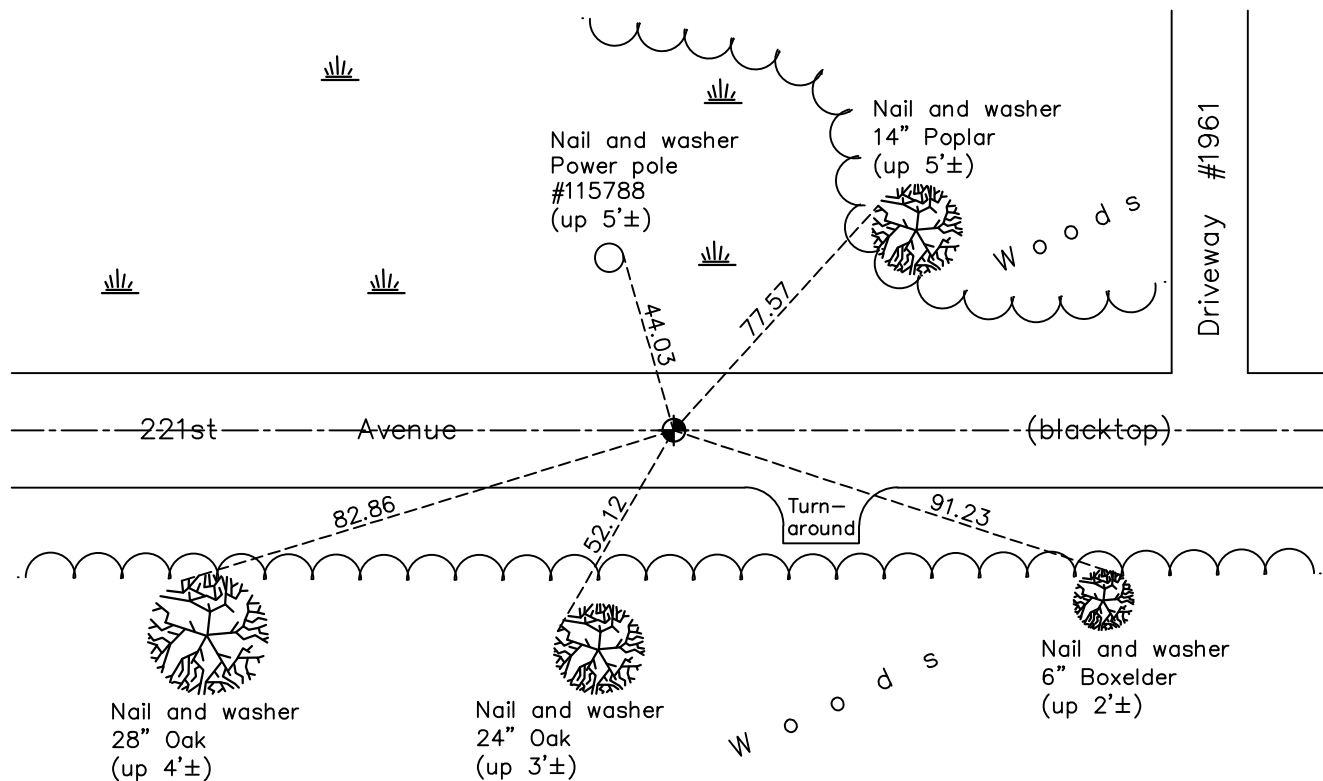
North 1/4 Corner of Sec. 10 Township 33 Range 24

On the 26th day of November, 1963, the described corner was evidenced by a concrete monument

and to perpetuate the location of said corner, at the exact location thereof, a permanent marker was placed consisting of a cast iron monument

AND on the 7th day of July, 2020, said permanent marker was Replaced after const. flush and the ties were updated.

Updated reference ties are as shown below.



Revision Date
05/20/2021

N.A.D. 1983 Coordinates
(1996 Adjustment)

County Project Coordinates	
Northing	<u>222183.8263</u>
Easting	<u>487086.8167</u>
Date	<u>4/20/01</u>

I hereby certify that this United States public land survey monument record is correct and complete to the best of my knowledge and belief.

David M Zieglmeier Date 7/29/21

David Zieglmeier Anoka County Surveyor
Minnesota License Number 46179

HISTORY OF GOVERNMENT CORNER

Page No. 26

County of Anoka

State of Minnesota

North 1/4 Corner of Sec. 10 Township 33 Range 24

CORNER HISTORY:

December 20, 1944 - Harvey Cartwright set a concrete monument using proportion of Hills Survey book 78 page 78, and also checks with old fence lines running North and South. Updated ties to concrete monument.

November 26, 1963 - Found 4" square concrete monument down 0.1'± and updated ties. Placed 1/2" iron pipe on North edge of concrete.

July 16, 1965 - Found concrete monument and updated ties.

January 23, 1974 - Found concrete monument.

August 26, 1977 - Found cast iron monument set in place of concrete monument. Updated ties.

June 27, 1978 - Found cast iron monument and updated ties.

July 15, 1981 - Found cast iron monument and updated ties.

August 8, 1984 - Found cast iron monument and updated ties.

July 1, 1992 - Found cast iron monument w/sign and post on south side of road. Updated ties.

June 3, 1997 - Found cast iron monument broken and replaced with a new cast iron monument. Updated ties.

April 1, 2002 - Found cast iron monument, set construction ties and updated corner ties prior to road construction. Removed monument.

August 12, 2003 - Set cast iron monument after construction using static GPS methods. Updated ties.

September 7, 2011 - Found cast iron monument on centerline road. Verified position by VRS GPS methods. Updated ties.

April 5, 2017 - Found cast iron monument flush on centerline road and updated ties.

July 7, 2020 - Replaced cast iron monument flush after road construction. Verified position by VRS GPS methods. Updated ties.