

# CERTIFICATE OF LOCATION OF GOVERNMENT CORNER

County of Anoka

State of Minnesota

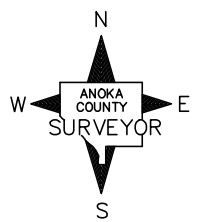
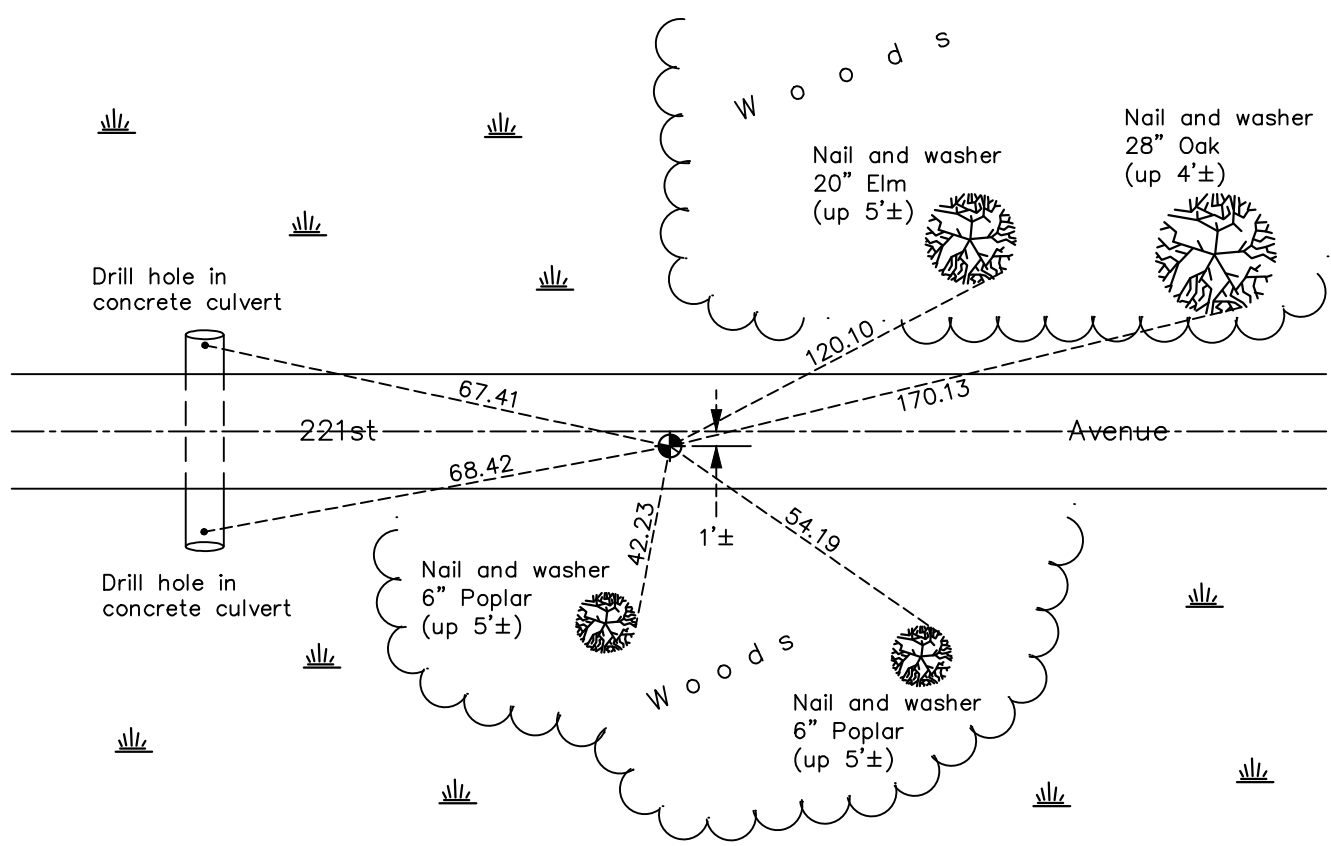
## Northwest Corner of Sec. 10 Township 33 Range 24

On the 26th day of November, 1963, the described corner was evidenced by a concrete monument

and to perpetuate the location of said corner, at the exact location thereof, a permanent marker was placed consisting of a cast iron monument

AND on the 23rd day of November, 2020, said permanent marker was found flush and the ties were updated

Updated reference ties are as shown below.



Revision Date  
05/20/2021

N.A.D. 1983 Coordinates  
(1996 Adjustment)

County Project Coordinates	
Northing	<u>222187.1804</u>
Easting	<u>484445.1917</u>
Date	<u>2/22/01</u>

I hereby certify that this United States public land survey monument record is correct and complete to the best of my knowledge and belief.

*David M Zieglmeier* Date 7/29/21

David Zieglmeier Anoka County Surveyor  
Minnesota License Number 46179

# HISTORY OF GOVERNMENT CORNER

Page No. 27

County of Anoka

State of Minnesota

## Northwest Corner of Sec. 10 Township 33 Range 24

### **CORNER HISTORY:**

December 20, 1944 - Harvey Cartwright set a concrete monument using found 2" x 18" iron flush in road. Updated ties to concrete monument.

June 19, 1962 - N.C. Hoium found a concrete monument with an iron pipe on the north side. Updated ties.

November 26, 1963 - Found 4" square concrete monument w/top broken off down 1'± in dirt road. Updated ties.

July 16, 1965 - Found concrete monument and updated ties.

June 14, 1968 - Found concrete monument with an iron pipe on the north side. Updated ties.

July 20, 1971 - Found concrete monument and updated ties.

June 27, 1975 - Found concrete monument and updated ties.

June 27, 1978 - Found concrete monument and updated ties.

July 31, 1981 - Found concrete monument and updated ties.

August 7, 1984 - Found cast iron monument and updated ties.

July 16, 1987 - Found cast iron monument and updated ties.

July 1, 1992 - Found cast iron monument and updated ties.

June 27, 1997 - Found monument and set construction ties prior to construction. Removed monument.

May 17, 1999 - Reset cast iron monument after construction and updated ties.

February 22, 2001 - Found cast iron monument and updated ties. Established NAD 1983 (1996 adj.) Anoka County project coordinates by static GPS methods.

September 7, 2011 - Found cast iron monument. Verified position by VRS GPS methods. Updated ties.

May 18, 2015 - Found cast iron monument, verified position by VRS GPS methods and updated ties prior to road construction. Monument broke during loosening of monument top.

August 25, 2015 - Raised cast iron monument flush with road after construction.

April 5, 2017 - Found cast iron monument flush and 1'± south of centerline. Updated ties.

November 23, 2020 - Found cast iron monument flush and 1'± south of centerline. Updated ties.