

CERTIFICATE OF LOCATION OF GOVERNMENT CORNER

County of Anoka

State of Minnesota

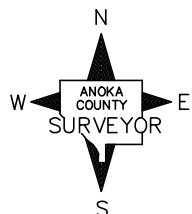
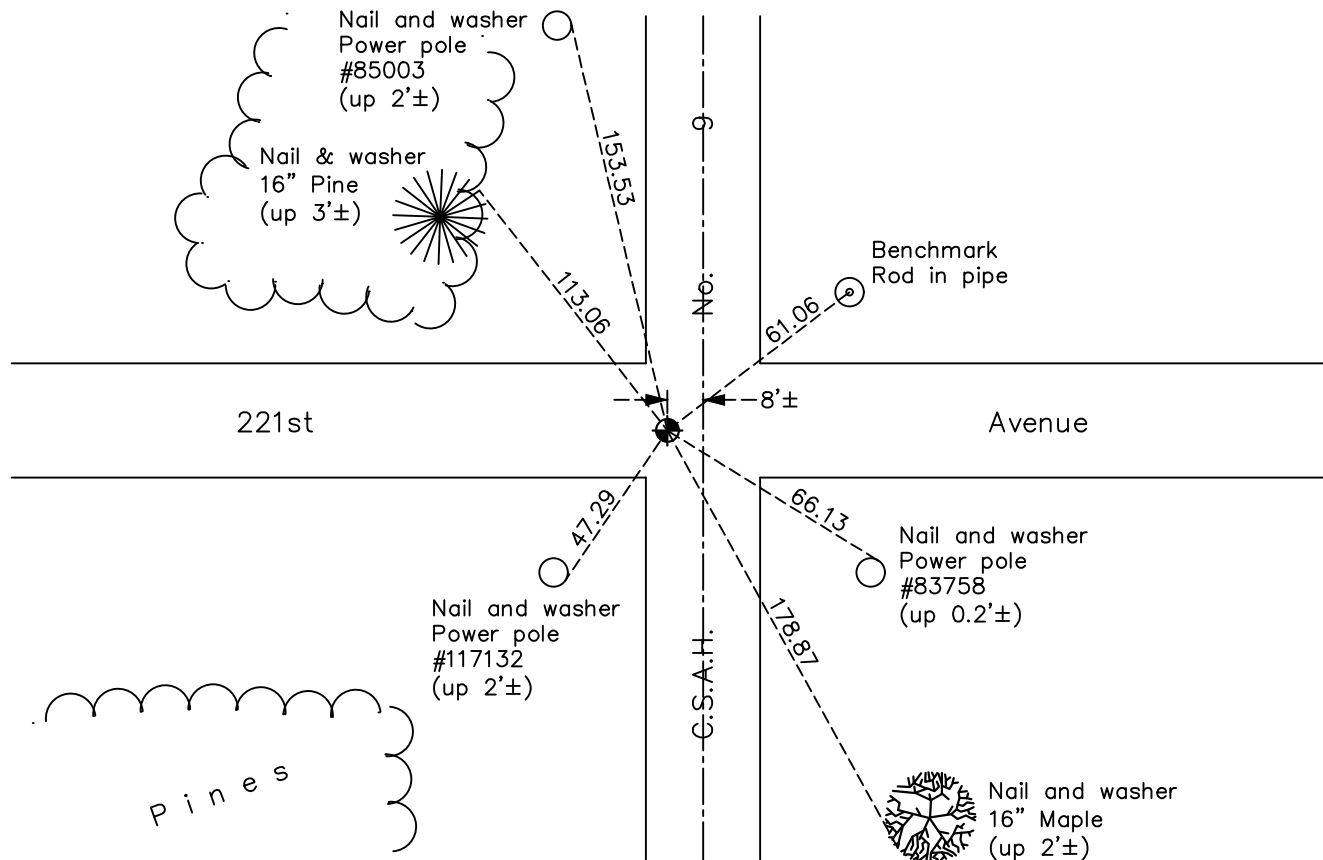
Northwest Corner of Sec. 9 Township 33 Range 24

On the 8th day of May, 1963, the described corner was evidenced by a granite monument

and to perpetuate the location of said corner, at the exact location thereof, a permanent marker was placed consisting of a cast iron monument

AND on the 29 day of October, 2019, said permanent marker was Raised flush with the surface and the ties were updated

Updated reference ties are as shown below.



Revision Date

12/3/19

N.A.D. 1983 Coordinates
(1996 Adjustment)

County Project Coordinates	
Northing	<u>222258.3616</u>
Easting	<u>479185.4642</u>
Date	<u>4/24/01</u>

I hereby certify that this United States public land survey monument record is correct and complete to the best of my knowledge and belief.

David M Zieglmeier Date 7/29/21

David Zieglmeier Anoka County Surveyor
Minnesota License Number 46179

HISTORY OF GOVERNMENT CORNER

Page No. 29

County of Anoka

State of Minnesota

Northwest Corner of Sec. 9 Township 33 Range 24

CORNER HISTORY:

December 20, 1944 - Found granite monument flush and established ties to granite monument.

March 14, 1958 - Found granite monument 5'± west of original position along the fence line. Notes indicate the granite was reset after being disturbed by road grading in 1946-47 approximately. An iron pipe was set at the intersection of the original corner ties.

September 8, 1960 - Found granite monument down 0.6' and iron pipe flush. Updated ties to granite monument and iron pipe.

May 8, 1963 - Found iron pipe and replaced with a cast iron monument. Updated ties and removed granite monument.

August 3, 1965 - Found cast iron monument and updated ties.

June 14, 1968 - Found cast iron monument and updated ties.

July 19, 1971 - Found cast iron monument and updated ties.

June 27, 1975 - Found cast iron monument and updated ties.

June 27, 1978 - Found cast iron monument and updated ties.

July 15, 1981 - Found cast iron monument and updated ties.

August 8, 1984 - Found cast iron monument and updated ties.

June 29, 1992 - Found cast iron monument and updated ties.

June 4, 1997 - Found cast iron monument and updated ties.

April 24, 2001 - Found cast iron monument, established NAD 1983 (1996 adj.) Anoka County project coordinates by static GPS methods and updated ties.

January 31, 2012 - Found cast iron monument, verified position by VRS GPS methods and updated ties.

April 2017 - Found cast iron monument flush, verified position by VRS GPS methods and updated ties.

June 13, 2019 - Found cast iron monument, verified position by VRS GPS methods and updated ties prior to road overlay. Loosened monument top only.

October 29, 2019 - Raised monument top flush, verified position by VRS and static GPS methods. Updated ties.