

# CERTIFICATE OF LOCATION OF GOVERNMENT CORNER

County of Anoka

State of Minnesota

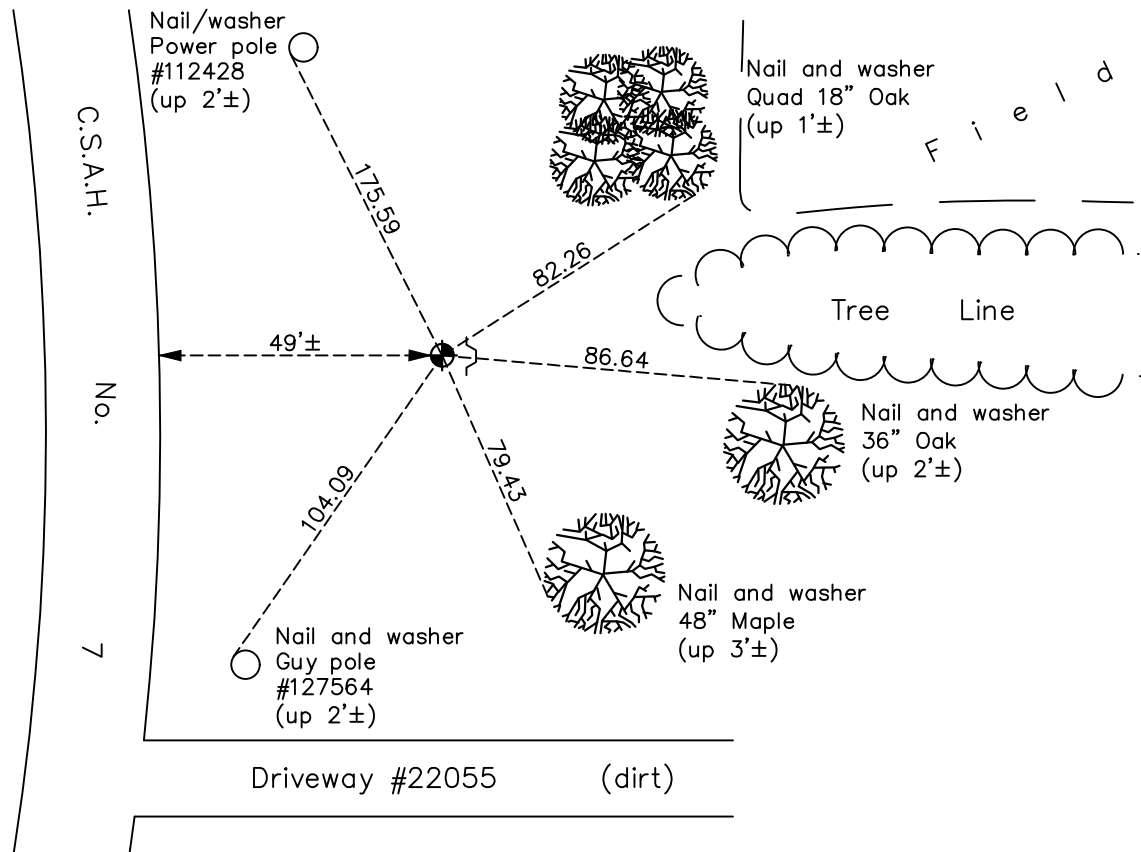
## Northwest Corner of Sec. 8 Township 33 Range 24

On the 19th day of July, 1960, the described corner was evidenced by a concrete monument

and to perpetuate the location of said corner, at the exact location thereof, a permanent marker was placed consisting of a cast iron monument on top of the broken concrete monument with a sign and post on the east side

AND on the 4th day of December, 2020, said permanent marker was found down 0.3'± with sign and post on the east side and the ties were updated

Updated reference ties are as shown below.



Revision Date

05/20/2021

N.A.D. 1983 Coordinates  
(1996 Adjustment)

County Project Coordinates	
Northing	<u>222327.3577</u>
Easting	<u>473925.5762</u>
Date	<u>3/29/01</u>

I hereby certify that this United States public land survey monument record is correct and complete to the best of my knowledge and belief.

*David M Zieglmeier* Date 7/29/21

David Zieglmeier Anoka County Surveyor  
Minnesota License Number 46179

# HISTORY OF GOVERNMENT CORNER

Page No. 32

County of Anoka

State of Minnesota

## Northwest Corner of Sec. 8 Township 33 Range 24

### **CORNER HISTORY:**

May 1958 - Minnesota State Highway Department found a concrete monument down 9" and updated ties.

July 19, 1960 - Found concrete monument down 1'± and updated ties.

July 22, 1965 - Found concrete monument down 2'±. Set cast iron monument flush with road on top of concrete monument. Updated ties.

June 21, 1968 - Found cast iron monument and updated ties.

July 29, 1971 - Found cast iron monument and updated ties.

June 27, 1975 - Found cast iron monument and updated ties.

June 29, 1978 - Found cast iron monument and updated ties.

July 22, 1981 - Found cast iron monument and updated ties.

August 10, 1984 - Found cast iron monument and updated ties.

July 22, 1989 - Found cast iron monument and updated ties.

July 6, 1992 - Found cast iron monument and updated ties.

April 21, 1997 - Found cast iron monument and set construction ties prior to road construction.

October 14, 1997 - Set cast iron monument on top of broken concrete monument after construction. Updated ties.

March 29, 2001 - Found cast iron monument and updated ties. Established NAD 1983 (1996 adj.) Anoka County project coordinates by static GPS methods.

December 30, 2011 - Found cast iron monument down 0.3'±. Verified position by VRS GPS methods. Updated ties.

April 19, 2017 - Found cast iron monument down 0.3'±. Verified position by VRS GPS methods. Updated ties.

December 4, 2020 - Found cast iron monument down 0.3'±. Verified position by VRS GPS methods. Updated ties.