

# CERTIFICATE OF LOCATION OF GOVERNMENT CORNER

County of Anoka

State of Minnesota

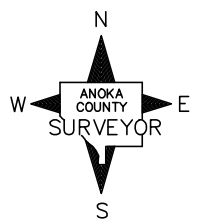
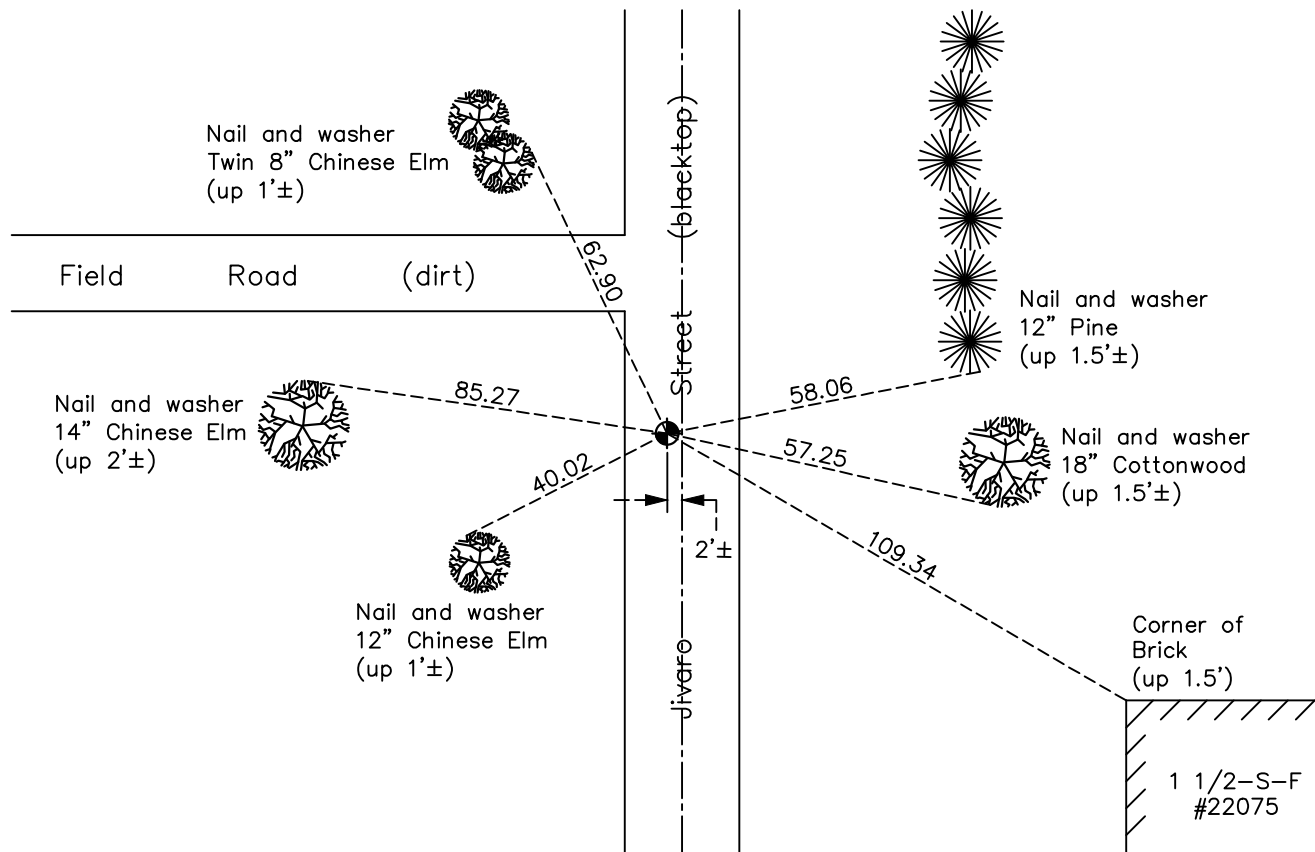
## South 1/4 Corner of Sec. 6 Township 33 Range 24

On the 20th day of June, 1967, the described corner was evidenced by area resurvey

and to perpetuate the location of said corner, at the exact location thereof, a permanent marker was placed consisting of a cast iron monument

AND on the 7th day of October, 2020, said permanent marker was found down 0.1'± and the ties were updated

Updated reference ties are as shown below.



N.A.D. 1983 Coordinates  
(1996 Adjustment)

County Project Coordinates	
Northing	<u>222374.6114</u>
Easting	<u>471299.7129</u>
Date	<u>4/25/01</u>

Revision Date  
05/20/2021

I hereby certify that this United States public land survey monument record is correct and complete to the best of my knowledge and belief.

*David M Zieglmeier* Date 7/29/21

David Zieglmeier Anoka County Surveyor  
Minnesota License Number 46179

# HISTORY OF GOVERNMENT CORNER

Page No. 33

County of Anoka

State of Minnesota

South 1/4 Corner of Sec. 6 Township 33 Range 24

## **CORNER HISTORY:**

June 20, 1967 - Set cast iron monument flush using area resurvey. Established ties to monument. Monument falls 12'± south of east/west fence line.

June 21, 1968 - Found cast iron monument and updated ties.

August 9, 1971 - Found cast iron monument and updated ties.

July 1, 1975 - Reset cast iron monument down 1'± using plat of Seelye Brook Estates. Updated ties.

June 26, 1978 - Found cast iron monument and updated ties.

July 23, 1981 - Found cast iron monument and updated ties.

August 10, 1984 - Found cast iron monument and updated ties.

April 11, 1986 - Found cast iron monument and updated ties.

July 21, 1989 - Found cast iron monument and updated ties prior to road construction. Removed monument.

July 15, 1992 - Reset cast iron monument in blacktop road after construction. Updated ties.

June 11, 1997 - Found cast iron monument and updated ties.

April 25, 2001 - Established NAD 1983 (1996 adj.) Anoka County project coordinates by static GPS methods.

January 5, 2012 - Found cast iron monument down 0.2'±. Verified position by VRS GPS methods. Updated ties.

April 20, 2017 - Found cast iron monument down 0.2'±. Verified position by VRS GPS methods. Updated ties.

October 7, 2020 - Found cast iron monument down 0.1'±. Verified position by VRS GPS methods. Updated ties.