

# CERTIFICATE OF LOCATION OF GOVERNMENT CORNER

County of Anoka

State of Minnesota

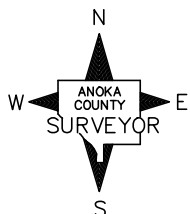
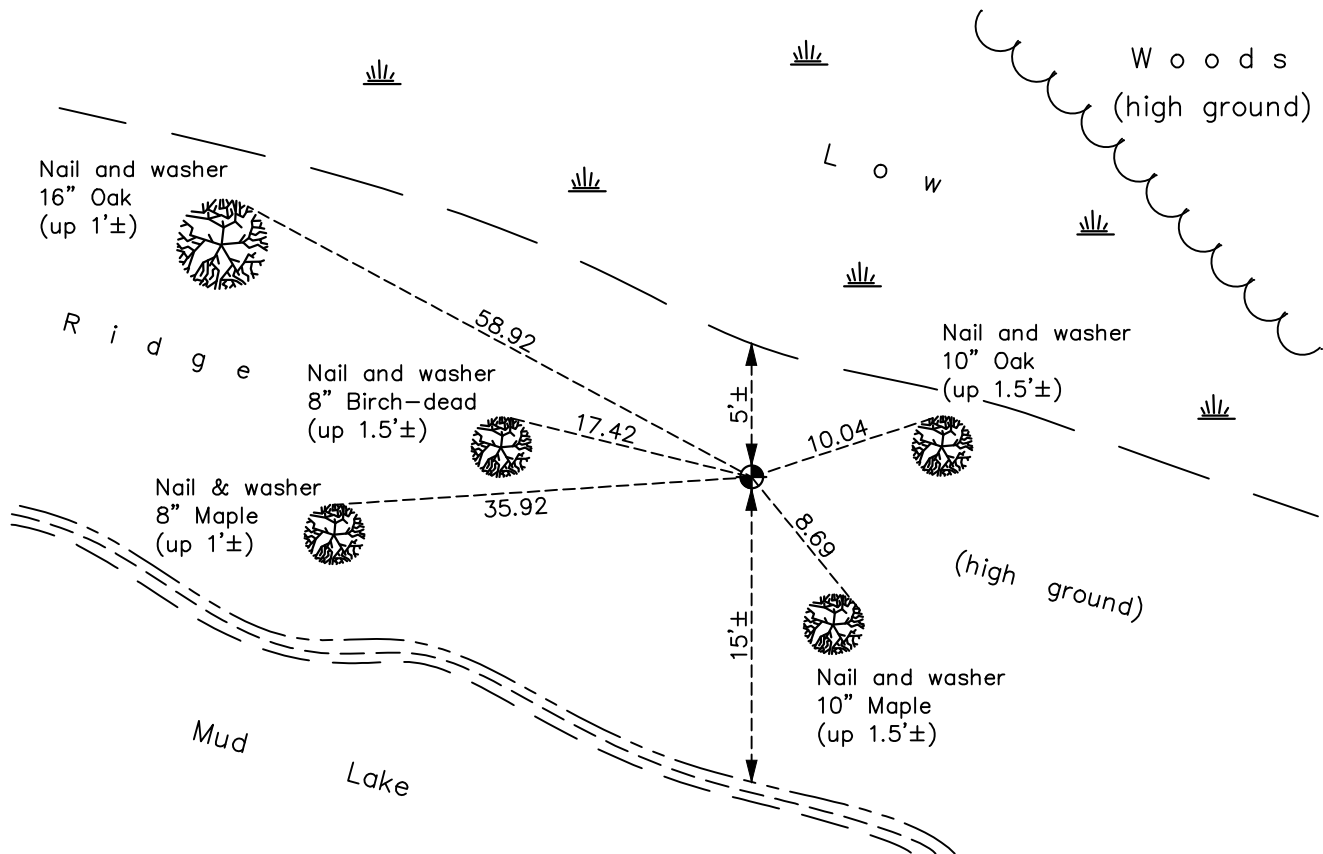
Witness Corner of Sec. 6 Township 33 Range 24  
(on west line of section)

On the 15th day of June, 1967, the described corner was evidenced by area resurvey

and to perpetuate the location of said corner, at the exact location thereof, a permanent marker was placed consisting of a cast iron monument

AND on the 8th day of December, 2020, said permanent marker was found flush and the ties were updated

Updated reference ties are as shown below.



Revision Date

05/20/2021

N.A.D. 1983 Coordinates  
(1996 Adjustment)

County Project Coordinates

Northing 222918.5943

Easting 468649.0440

Date 5/08/01

I hereby certify that this United States public land survey monument record is correct and complete to the best of my knowledge and belief.

*David M Zieglmeier* Date 7/29/21

David Zieglmeier Anoka County Surveyor

Minnesota License Number 46179

# HISTORY OF GOVERNMENT CORNER

Page No. 34

County of Anoka

State of Minnesota

Witness Corner of Sec. 6 Township 33 Range 24  
(on west line of section)

## **CORNER HISTORY:**

June 15, 1967 - Set cast iron monument flush using area resurvey. Established ties to monument.

January 23, 1974 - Found cast iron monument.

January 17, 1978 - Found cast iron monument flush and updated ties.

July 1, 1997 - Found cast iron monument and updated ties.

May 8, 2001 - Found cast iron monument and updated ties. Established NAD 1983 (1996 adj.) Anoka County project coordinates by static GPS methods.

January 5, 2012 - Found cast iron monument. Verified position by VRS GPS methods. Updated ties.

April 20, 2017 - Found cast iron monument flush. Verified position by VRS GPS methods. Updated ties.

December 8, 2020 - Found cast iron monument flush. Verified position by VRS GPS methods. Updated ties.