

CERTIFICATE OF LOCATION OF GOVERNMENT CORNER

County of Anoka

State of Minnesota

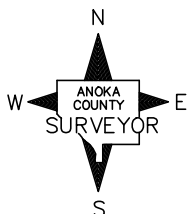
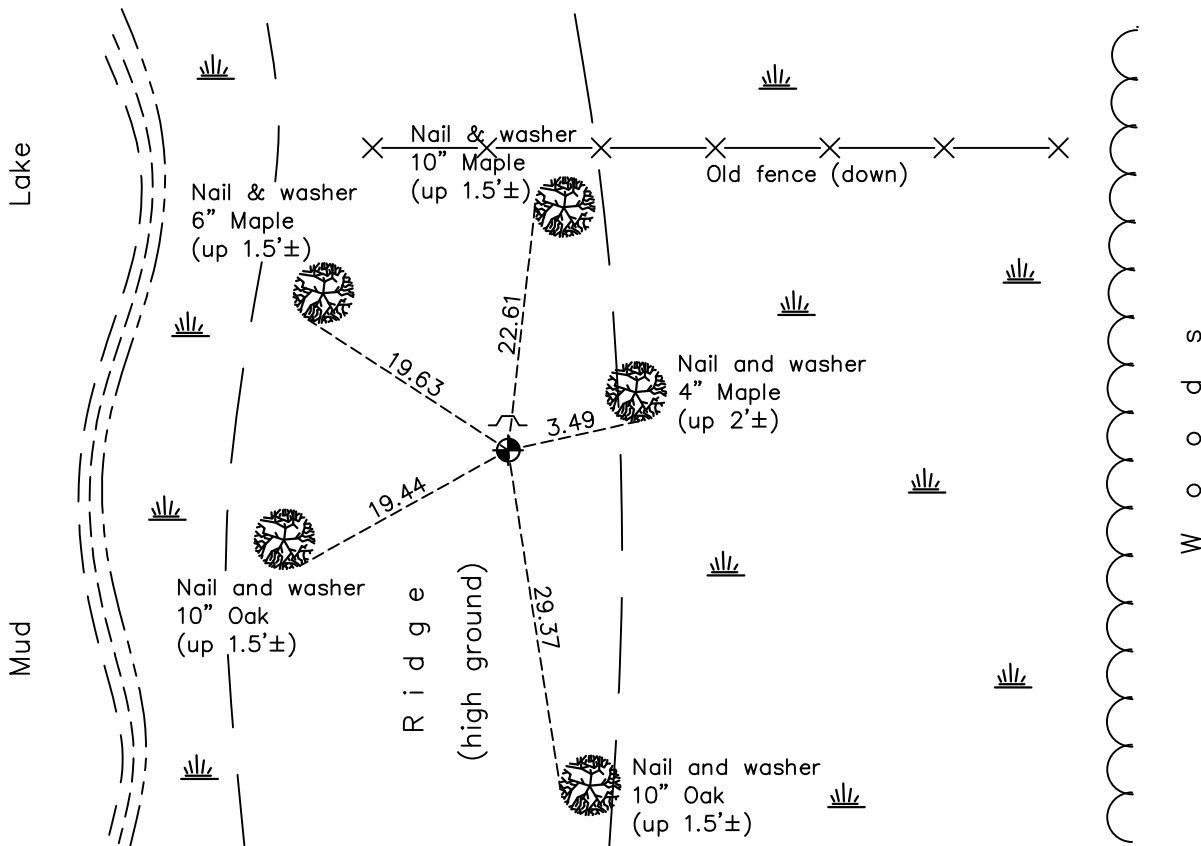
Witness Corner of Sec. 7 Township 33 Range 24
 (on north line of section)

On the 12th day of October, 1981, the described corner was evidenced by area resurvey

and to perpetuate the location of said corner, at the exact location thereof, a permanent marker was placed consisting of a cast iron monument with a sign and post on the north side

AND on the 15th day of December, 2020, said permanent marker was found down 0.1'± with a sign and post on the north side and the ties were updated

Updated reference ties are as shown below.



Revision Date

05/20/2021

N.A.D. 1983 Coordinates
(1996 Adjustment)

| | |
|----------------------------|--------------------|
| County Project Coordinates | |
| Northing | <u>222408.2656</u> |
| Easting | <u>469434.9224</u> |
| Date | <u>4/27/01</u> |

I hereby certify that this United States public land survey monument record is correct and complete to the best of my knowledge and belief.

David M Zieglmeier Date 7/29/21

David Zieglmeier Anoka County Surveyor
Minnesota License Number 46179

HISTORY OF GOVERNMENT CORNER

Page No. 35

County of Anoka

State of Minnesota

Witness Corner of Sec. 7 Township 33 Range 24
(on north line of section)

CORNER HISTORY:

December 10, 1981 - Set cast iron monument flush using area resurvey. Established ties to monument. Set sign and post on the north side.

July 31, 1987 - Found cast iron monument and updated ties.

July 16, 1992 - Found cast iron monument and updated ties.

June 25, 1997 - Found cast iron monument and updated ties.

April 27, 2001 - Established NAD 1983 (1996 adj.) Anoka County project coordinates by static GPS methods.

January 5, 2012 - Found cast iron monument. Verified position by VRS GPS methods. Updated ties.

April 25, 2017 - Found cast iron monument down 0.1'± and updated ties.

December 15, 2020 - Found cast iron monument down 0.1'±. Verified position by VRS GPS methods. Updated ties.