

CERTIFICATE OF LOCATION OF GOVERNMENT CORNER

County of Anoka

State of Minnesota

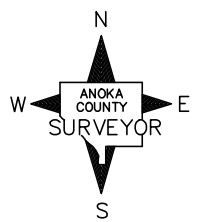
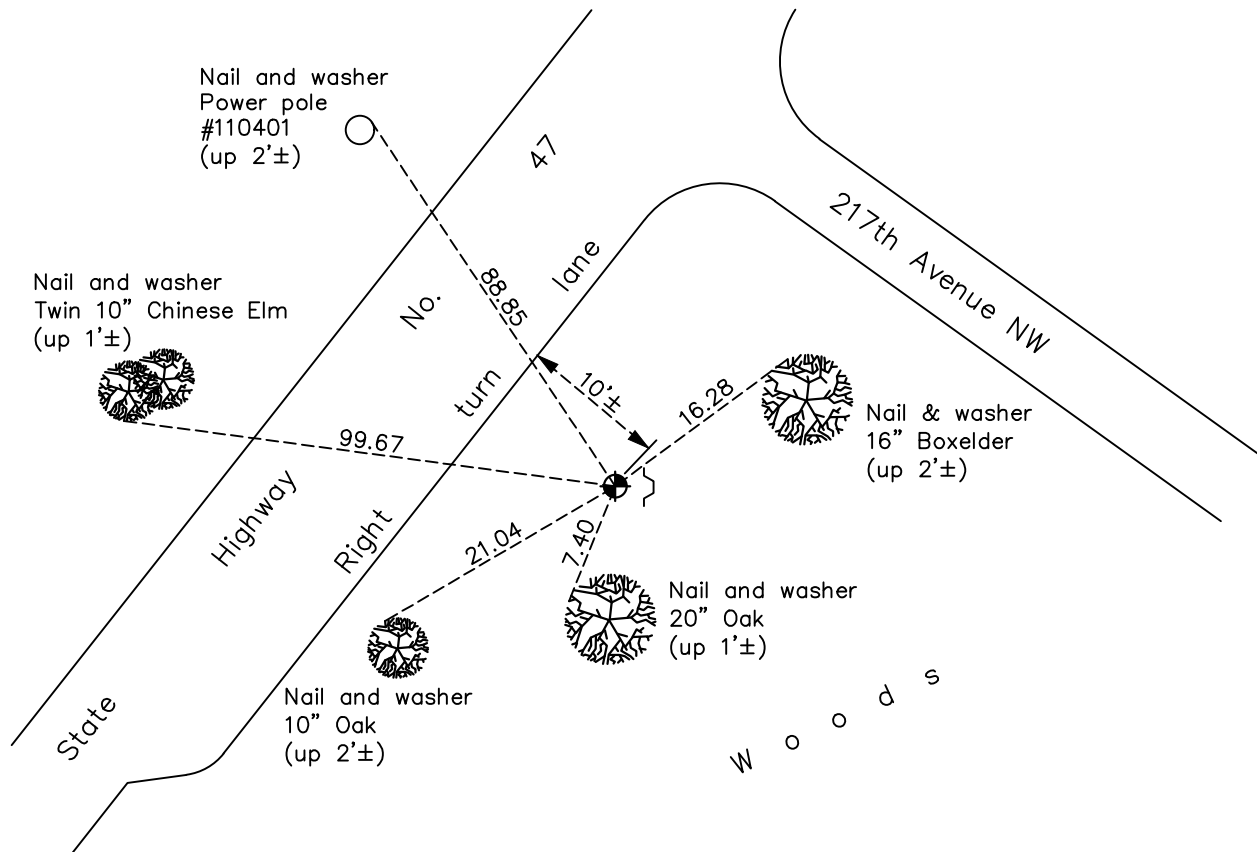
West 1/4 Corner of Sec. 7 Township 33 Range 24

On the 16th day of June, 1967, the described corner was evidenced by area resurvey

and to perpetuate the location of said corner, at the exact location thereof, a permanent marker was placed consisting of a cast iron monument with a sign and post on the east side

AND on the 4th day of December, 2020, said permanent marker was found flush with the surface and the ties were updated

Updated reference ties are as shown below.



N.A.D. 1983 Coordinates
(1996 Adjustment)

County Project Coordinates	
Northing	<u>219794.2211</u>
Easting	<u>468656.2552</u>
Date	<u>3/30/01</u>

Revision Date
05/20/2021

I hereby certify that this United States public land survey monument record is correct and complete to the best of my knowledge and belief.

David M Zieglmeier Date 7/29/21

David Zieglmeier Anoka County Surveyor
Minnesota License Number 46179

HISTORY OF GOVERNMENT CORNER

Page No. 36

County of Anoka

State of Minnesota

West 1/4 Corner of Sec. 7 Township 33 Range 24

CORNER HISTORY:

June 16, 1967 - Set cast iron monument flush using area resurvey. Established ties to monument.

June 21, 1968 - Found cast iron monument and updated ties.

August 9, 1971 - Found cast iron monument and updated ties.

June 27, 1975 - Found cast iron monument w/sign and post on the north side. Updated ties.

June 29, 1978 - Found cast iron monument and updated ties.

July 23, 1981 - Found cast iron monument and updated ties.

August 10, 1984 - Found cast iron monument and updated ties.

July 7, 1992 - Found cast iron monument and updated ties.

August 28, 1996 - Found cast iron monument and updated ties.

March 30, 2001 - Established NAD 1983 (1996 adj.) Anoka County project coordinates by static GPS methods.

April 30, 2001 - Found cast iron monument and updated ties.

January 5, 2012 - Found cast iron monument. Verified position by VRS GPS methods. Updated ties.

April 20, 2017 - Found cast iron monument flush w/sign and post on the east side. Updated ties.

December 4, 2020 - Found cast iron monument flush w/sign and post on the east side. Updated ties.