

# CERTIFICATE OF LOCATION OF GOVERNMENT CORNER

County of Anoka

State of Minnesota

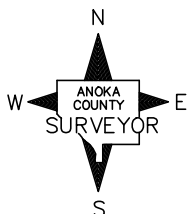
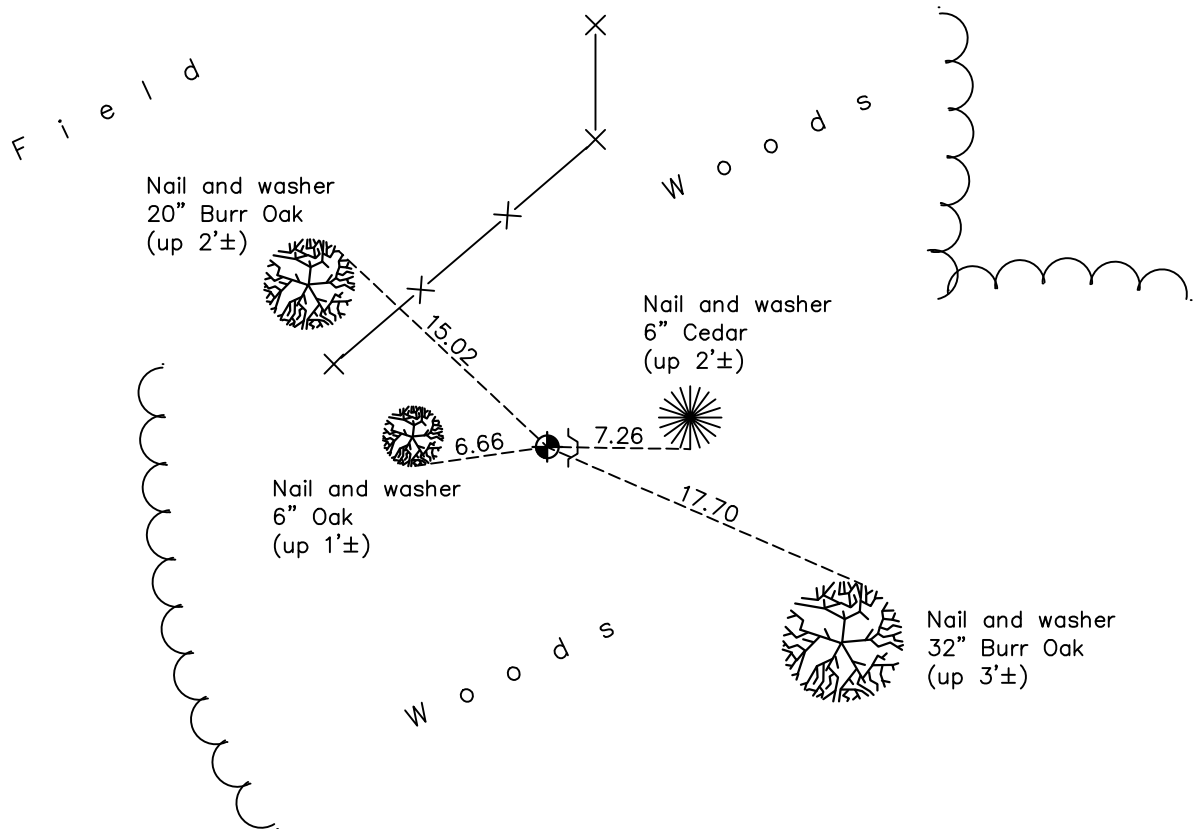
## West 1/4 Corner of Sec. 8 Township 33 Range 24

On the 19th day of July, 1960, the described corner was evidenced by a concrete monument

and to perpetuate the location of said corner, at the exact location thereof, a permanent marker was placed consisting of a cast iron monument with a MNDOT sign and post on the east side

AND on the 22nd day of December, 2020, said permanent marker was found flush and the ties were updated

Updated reference ties are as shown below.



Revision Date

05/20/2021

N.A.D. 1983 Coordinates  
(1996 Adjustment)

County Project Coordinates	
Northing	<u>219722.4626</u>
Easting	<u>473923.4113</u>
Date	<u>5/09/01</u>

I hereby certify that this United States public land survey monument record is correct and complete to the best of my knowledge and belief.

*David M Zieglmeier* Date 7/29/21

David Zieglmeier Anoka County Surveyor  
Minnesota License Number 46179

# HISTORY OF GOVERNMENT CORNER

Page No. 37

County of Anoka

State of Minnesota

## West 1/4 Corner of Sec. 8 Township 33 Range 24

### **CORNER HISTORY:**

May 1958 - Minnesota Highway Department found a concrete monument up 4"± with iron on north side. Updated the ties.

July 19, 1960 - Found concrete monument up 4"± with iron pipe on north side. Updated ties.

July 29, 1965 - Found concrete monument and updated ties.

June 24, 1968 - Found concrete monument up 4"± with a 3/4" pinched iron pipe on north side. Updated ties.

June 27, 1975 - Found concrete monument and replaced with a cast iron monument up 0.1'±. Updated ties.

June 29, 1978 - Found cast iron monument and updated ties.

July 23, 1981 - Found cast iron monument and updated ties.

August 20, 1984 - Found cast iron monument and updated ties.

July 30, 1987 - Found cast iron monument and updated ties.

March 28, 1991 - Found cast iron monument and updated ties.

July 14, 1992 - Found cast iron monument and updated ties.

June 18, 1997 - Found cast iron monument and updated ties.

May 9, 2001 - Found cast iron monument and updated ties. Established NAD 1983 (1996 adj.) Anoka County project coordinates by static GPS methods.

January 17, 2012 - Found cast iron monument flush with MNDOT sign and post on the east side. Updated ties.

April 25, 2017 - Found cast iron monument flush and updated ties.

December 22, 2020 - Found cast iron monument flush and updated ties.