

CERTIFICATE OF LOCATION OF GOVERNMENT CORNER

County of Anoka

State of Minnesota

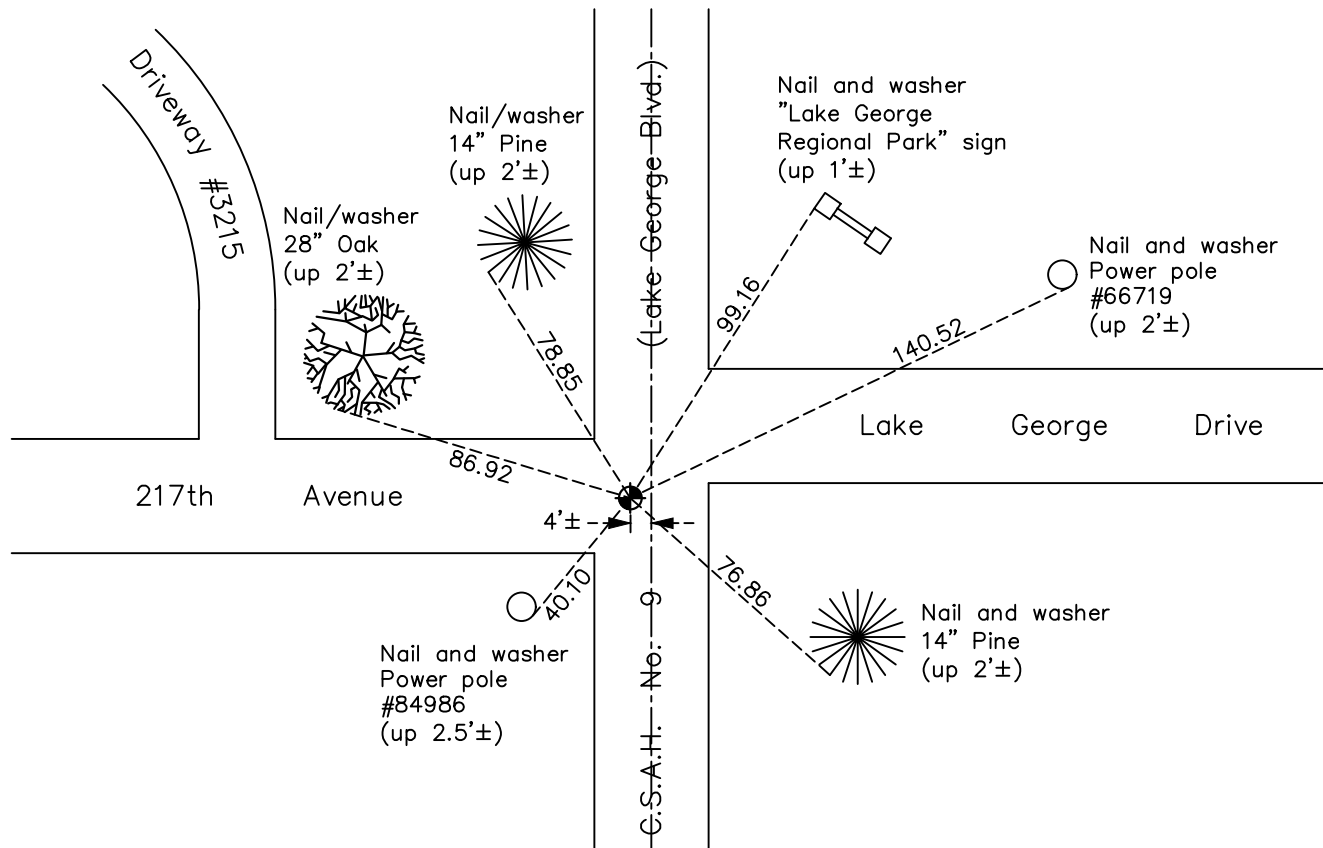
West 1/4 Corner of Sec. 9 Township 33 Range 24

On the 8th day of May, 1963, the described corner was evidenced by area resurvey

and to perpetuate the location of said corner, at the exact location thereof, a permanent marker was placed consisting of a cast iron monument

AND on the 28th day of October, 2019, said permanent marker was Reset with a cast iron monument flush and the ties were updated

Updated reference ties are as shown below.



N.A.D. 1983 Coordinates
(1996 Adjustment)

County Project Coordinates	
Northing	219620.4507
Easting	479148.0607
Date	5/10/01

I hereby certify that this United States public land survey monument record is correct and complete to the best of my knowledge and belief.

David M Zieglmeier Date 7/29/21

David Zieglmeier Anoka County Surveyor
Minnesota License Number 46179

HISTORY OF GOVERNMENT CORNER

Page No. 38

County of Anoka

State of Minnesota

West 1/4 Corner of Sec. 9 Township 33 Range 24

CORNER HISTORY:

August 24, 1946 - Set concrete monument on true north-south section line and on line from east quarter corner and center of section 9 T33 R24 by Harvey A. Cartwright. Established ties to monument.

March 14, 1958 - Found Cartwright ties and noted that they do not intersect one another by 6 feet. It is unclear if anything was done.

May 8, 1963 - Concrete not found. Found 1" iron pipe down 18". The remaining Cartwright ties to the concrete monument fit the iron pipe 0.15' each way. Drove down the iron pipe and set a cast iron monument flush. Updated the ties.

August 3, 1965 - Found cast iron monument and updated ties.

June 24, 1968 - Found cast iron monument and updated ties.

July 19, 1971 - Found cast iron monument and updated ties.

June 30, 1975 - Found cast iron monument and updated ties.

June 29, 1978 - Found cast iron monument and updated ties.

July 22, 1981 - Found cast iron monument and updated ties.

August 3, 1984 - Found cast iron monument and updated ties.

July 21, 1987 - Found cast iron monument and updated ties.

July 7, 1992 - Found cast iron monument and updated ties.

June 3, 1997 - Found cast iron monument and updated ties.

May 10, 2001 - Found cast iron monument, established NAD 1983 (1996 adj.) Anoka County project coordinates by static GPS methods and updated ties.

January 31, 2012 - Found cast iron monument, verified position by VRS GPS methods and updated ties.

April 12, 2017 - Found cast iron monument flush, verified position by VRS GPS methods and updated ties.

June 13, 2019 - Found cast iron monument, verified position by VRS GPS methods and updated ties prior to road construction. Removed monument.

October 28, 2019 - Set cast iron monument flush after road construction using static GPS methods. Verified position by VRS GPS methods and updated ties.