

CERTIFICATE OF LOCATION OF GOVERNMENT CORNER

County of Anoka

State of Minnesota

Meander Corner of Sec. 9 Township 33 Range 24

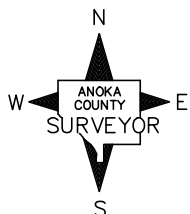
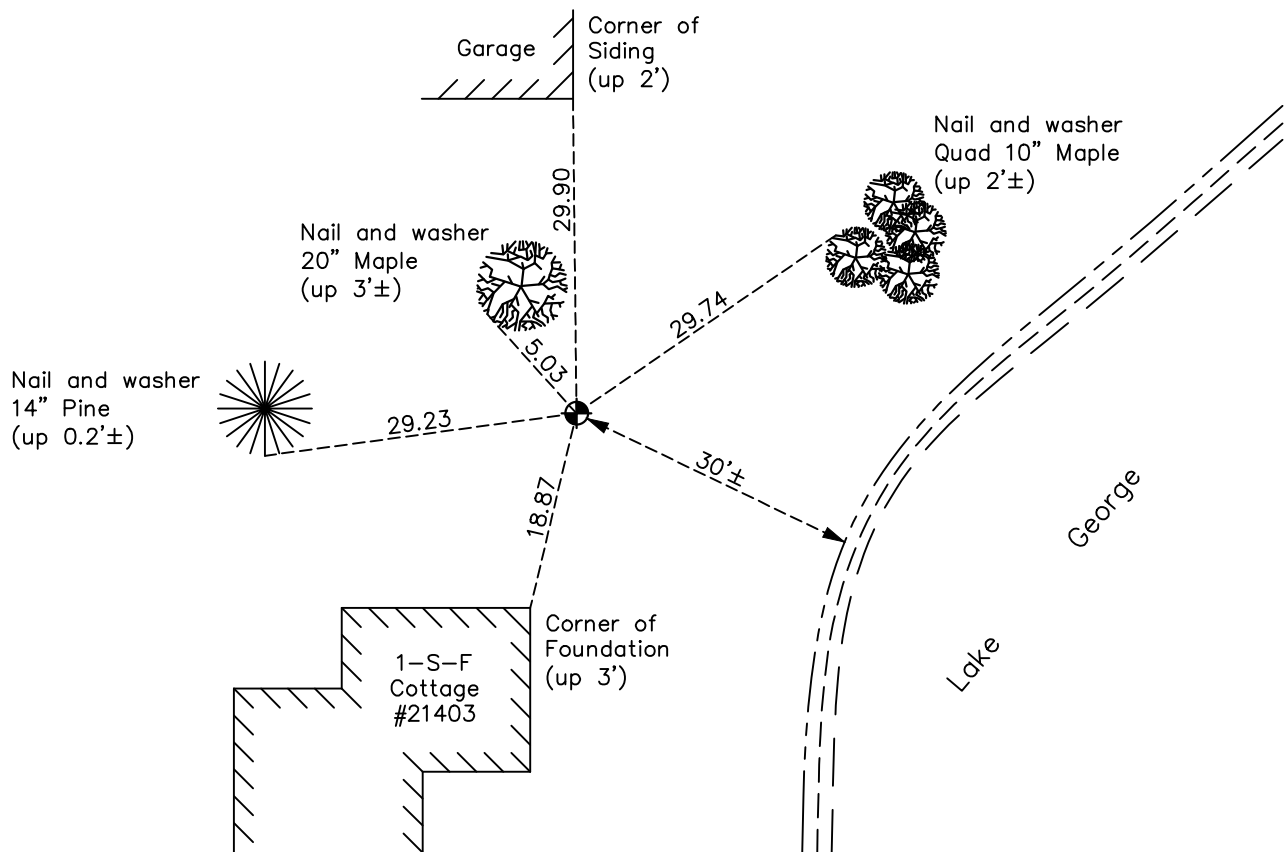
(on west line of section)

On the 19th day of July, 1961, the described corner was evidenced by a 2" iron pipe

and to perpetuate the location of said corner, at the exact location thereof, a permanent marker was placed consisting of a cast iron monument

AND on the 23rd day of November, 2020, said permanent marker was found down 0.3'± and the ties were updated

Updated reference ties are as shown below.



Revision Date

05/20/2021

N.A.D. 1983 Coordinates
(1996 Adjustment)

County Project Coordinates	
Northing	<u>217595.4063</u>
Easting	<u>479123.1670</u>
Date	<u>5/09/01</u>

I hereby certify that this United States public land survey monument record is correct and complete to the best of my knowledge and belief.

David M Zieglmeier Date 7/29/21

David Zieglmeier Anoka County Surveyor
Minnesota License Number 46179

HISTORY OF GOVERNMENT CORNER

Page No. 39

County of Anoka

State of Minnesota

Meander Corner of Sec. 9 Township 33 Range 24 (on west line of section)

CORNER HISTORY:

August 24, 1946 - Harvey Cartwright set a concrete monument using found old iron and 2 stumps of bearing trees. Established ties to concrete monument.

September 14, 1958 - Roland W. Anderson found only a 2" iron pipe up 0.1'±. Updated ties.

November 2, 1961 - Found 2" iron pipe flush. Dug down, no concrete monument found. Updated ties.

June 5, 1964 - Found iron pipe down 0.5'± which fits ties. Found another 2" iron pipe up 0.5'± and 0.2' northeast of correct pipe. Updated ties.

July 19, 1965 - Found 2" iron pipe down 0.5'± and updated ties.

June 24, 1968 - Found iron pipes and replaced with a cast iron monument flush. Updated ties.

July 28, 1971 - Found cast iron monument and updated ties.

June 30, 1975 - Found cast iron monument and updated ties.

June 29, 1978 - Found cast iron monument and updated ties.

July 31, 1981 - Found cast iron monument and updated ties.

August 3, 1984 - Found cast iron monument and updated ties.

March 28, 1991 - Found cast iron monument and updated ties.

July 8, 1992 - Found cast iron monument and updated ties.

June 19, 1997 - Found cast iron monument and updated ties.

May 9, 2001 - Found cast iron monument and updated ties. Established NAD 1983 (1996 adj.) Anoka County project coordinates by static GPS methods.

December 20, 2011 - Found cast iron monument down 0.5'± and updated ties.

April 12, 2017 - Found cast iron monument down 0.3'± and updated ties.

November 23, 2020 - Found cast iron monument down 0.3'± and updated ties.