

CERTIFICATE OF LOCATION OF GOVERNMENT CORNER

County of Anoka

State of Minnesota

Meander Corner of Sec. 10 Township 33 Range 24

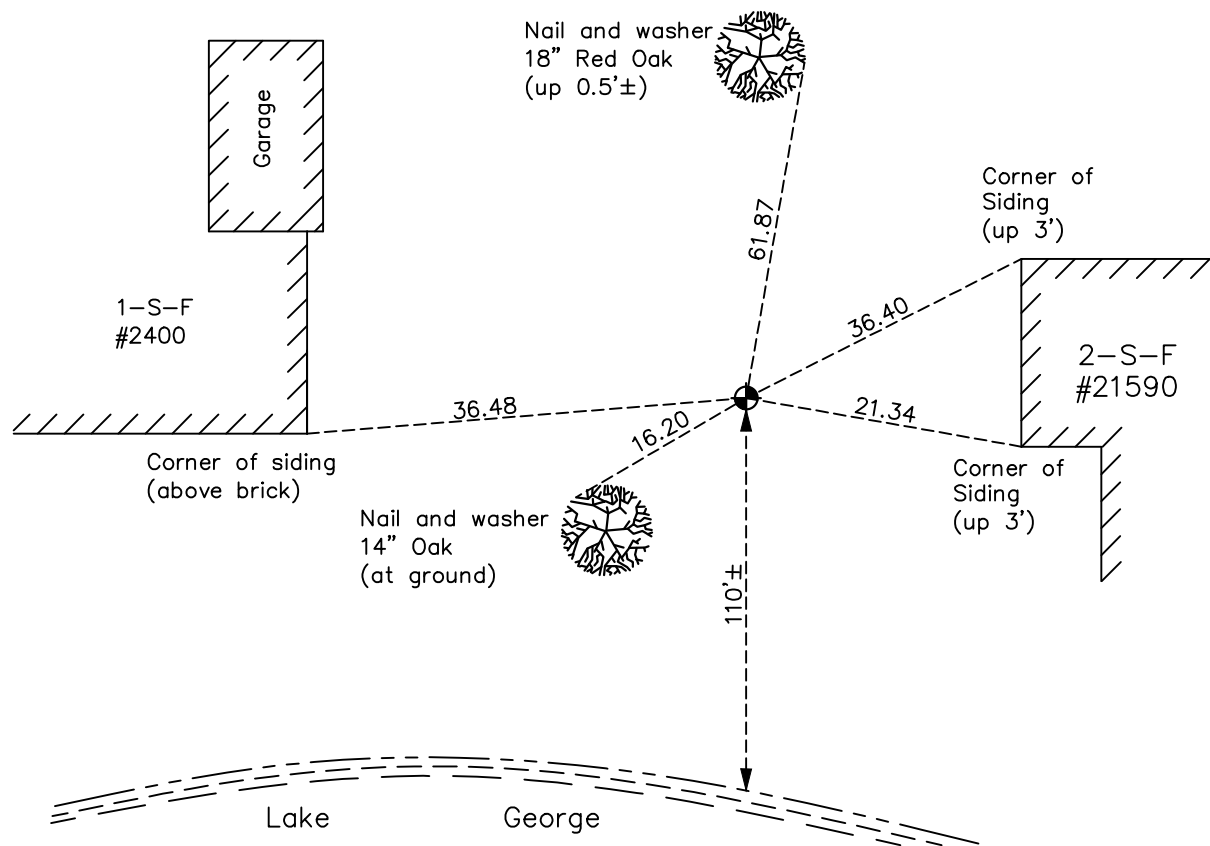
(On west line of section and north of Lake George)

On the 23rd day of August, 1960, the described corner was evidenced by a concrete monument

and to perpetuate the location of said corner, at the exact location thereof, a permanent marker was placed consisting of a cast iron monument on top of a concrete monument

AND on the 29th day of December, 2020, said permanent marker was found down 0.2± cast iron monument on top of concrete monument and the ties were updated

Updated reference ties are as shown below.



N

S

W ANOKA COUNTY SURVEYOR E

Revision Date

05/24/2021

N.A.D. 1983 Coordinates
(1996 Adjustment)

County Project Coordinates	
Northing	218987.2199
Easting	484450.0641
Date	5/11/01

I hereby certify that this United States public land survey monument record is correct and complete to the best of my knowledge and belief.

David M Zieglmeier Date 7/29/21

David Zieglmeier Anoka County Surveyor
Minnesota License Number 46179

HISTORY OF GOVERNMENT CORNER

Page No. 41

County of Anoka

State of Minnesota

Meander Corner of Sec. 10 Township 33 Range 24 (On west line of section and north of Lake George)

CORNER HISTORY:

December 20, 1944 - Harvey Cartwright set a concrete monument using old tie by ridge. Established ties to the concrete monument.

August 23, 1960 - Found concrete monument up 1"± with an iron pipe on the north side. Updated ties..

July 19, 1965 - Found concrete monument and updated ties.

June 25, 1968 - Found concrete monument and updated ties.

July 27, 1971 - Found concrete monument and updated ties.

September 11, 1972 - Found concrete monument and updated ties.

June 30, 1975 - Found concrete monument and updated ties.

June 29, 1978 - Found concrete monument and updated ties.

July 31, 1981 - Found concrete monument and updated ties.

August 14, 1984 - Found concrete monument up 0.2'± and updated ties.

July 14, 1992 - Found concrete monument and updated ties.

June 19, 1997 - Found concrete monument and updated ties.

May 11, 2001 - Found concrete monument and updated ties. Established NAD 1983 (1996 adj.) Anoka County project coordinates by static GPS methods.

July 14, 2008 - Found concrete monument broken off at an angle and down 0.5'±. Updated ties to dimple.

November 10, 2011 - Found concrete monument broken down 0.2'±. Verified position by VRS GPS methods. Updated ties.

April 5, 2017 - Found concrete monument broken down 0.2'± with no visible dimple. Checked corner ties to center.

May 8, 2017 - Set cast iron monument on top of broken off concrete monument using static GPS methods. Updated ties.

December 29, 2020 - Found cast iron monument down 0.2'±. Verified position by VRS GPS methods. Updated ties.