

# CERTIFICATE OF LOCATION OF GOVERNMENT CORNER

County of Anoka

State of Minnesota

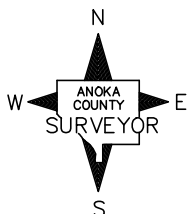
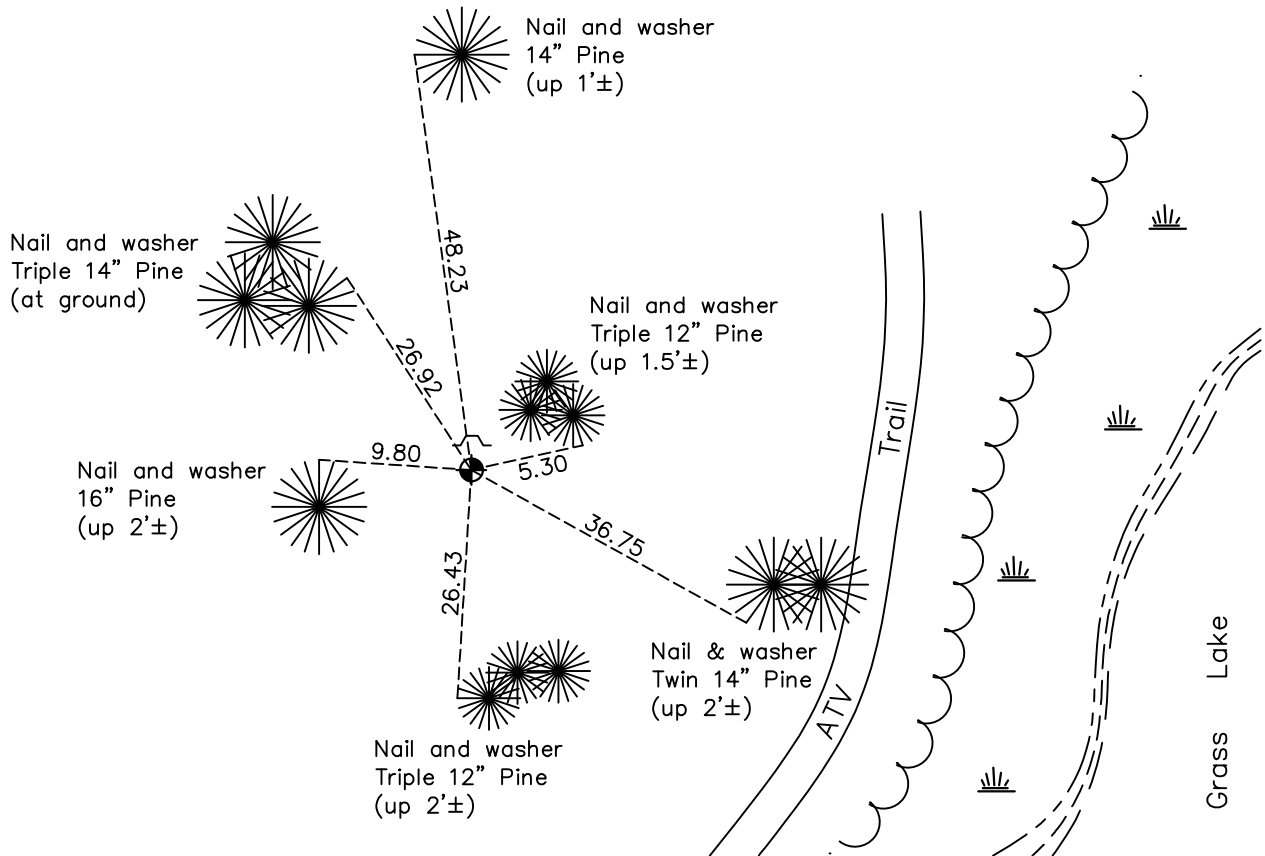
Witness Corner of Sec. 11 Township 33 Range 24  
 (on west line of section)

On the 27th day of September, 1977, the described corner was evidenced by area resurvey

and to perpetuate the location of said corner, at the exact location thereof, a permanent marker was placed consisting of a cast iron monument with a sign and post on the north side

AND on the 23rd day of February, 2021, said permanent marker was found down 0.2'±  
 and the ties were updated

Updated reference ties are as shown below.



Revision Date

06/09/2021

N.A.D. 1983 Coordinates  
 (1996 Adjustment)

County Project Coordinates	
Northing	<u>217890.2580</u>
Easting	<u>489705.4227</u>
Date	<u>11/08/01</u>

I hereby certify that this United States public land survey monument record is correct and complete to the best of my knowledge and belief.

*David M Zieglmeier* Date 7/29/21

David Zieglmeier Anoka County Surveyor  
 Minnesota License Number 46179

# HISTORY OF GOVERNMENT CORNER

Page No. 43

County of Anoka

State of Minnesota

Witness Corner of Sec. 11 Township 33 Range 24  
(on west line of section)

## **CORNER HISTORY:**

March 13, 1973 - Set cast iron monument using area resurvey. Corner ties unavailable trees too small. Set sign and post 1'± north of monument.

September 27, 1977 - Reset cast iron monument flush in new location. Established ties to monument. Set sign and post on the north side.

June 30, 1978 - Found cast iron monument and updated ties.

July 27, 1981 - Found cast iron monument and updated ties.

August 16, 1984 - Found cast iron monument and updated ties.

July 29, 1987 - Found cast iron monument and updated ties.

July 14, 1992 - Found cast iron monument and updated ties.

June 26, 1997 - Found cast iron monument and updated ties.

November 8, 2001 - Found cast iron monument and updated ties. Established NAD 1983 (1996 adj.) Anoka County project coordinates by static GPS methods.

October 10, 2011 - Found cast iron monument down 0.2'± and updated ties.

April 3, 2017 - Found cast iron monument down 0.2'± and updated ties.

February 23, 2021 - Found cast iron monument down 0.2'± and updated ties.