

# CERTIFICATE OF LOCATION OF GOVERNMENT CORNER

County of Anoka

State of Minnesota

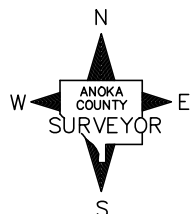
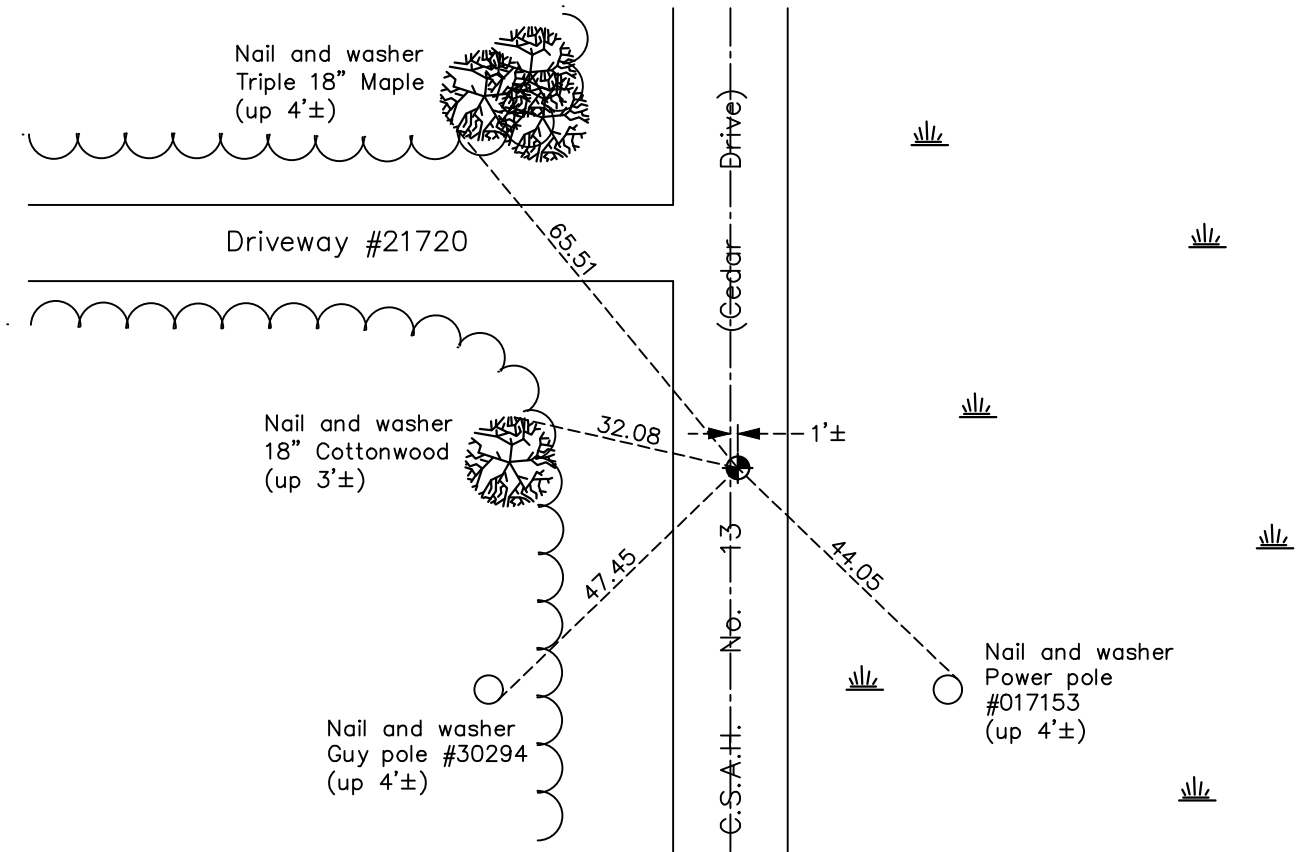
## East 1/4 Corner of Sec. 11 Township 33 Range 24

On the 13th day of August, 1965, the described corner was evidenced by area resurvey

and to perpetuate the location of said corner, at the exact location thereof, a permanent marker was placed consisting of a cast iron monument

AND on the 4th day of November, 2019, said permanent marker was Reset with a cast iron monument flush and the ties were updated

Updated reference ties are as shown below.



Revision Date

12/2/19

N.A.D. 1983 Coordinates  
(1996 Adjustment)

County Project Coordinates

Northing 219546.2617

Easting 494993.6035

Date 4/18/01

I hereby certify that this United States public land survey monument record is correct and complete to the best of my knowledge and belief.

*David M Zieglmeier* Date 7/29/21

David Zieglmeier Anoka County Surveyor

Minnesota License Number 46179

# HISTORY OF GOVERNMENT CORNER

Page No. 44

County of Anoka

State of Minnesota

## East 1/4 Corner of Sec. 11 Township 33 Range 24

### **CORNER HISTORY:**

August 13, 1965 - Set cast iron monument down 0.4'± using area resurvey and established ties to monument.

September 11, 1968 - Reset cast iron monument flush with the road and updated ties.

July 20, 1971 - Found cast iron monument and updated ties.

August 30, 1972 - Raised cast iron monument flush and updated ties.

July 1, 1975 - Found cast iron monument and updated ties.

June 30, 1978 - Found cast iron monument flush and updated ties.

July 17, 1981 - Found cast iron monument and updated ties.

August 8, 1984 - Found cast iron monument and updated ties.

July 20, 1987 - Found cast iron monument and updated ties.

March 28, 1991 - Found cast iron monument and updated ties.

February 21, 1992 - Found cast iron monument and updated ties.

May 30, 1997 - Found cast iron monument and updated ties.

April 18, 2001 - Found cast iron monument, established NAD 1983 (1996 adj.) Anoka County project coordinates by static GPS methods and updated ties.

September 9, 2011 - Found cast iron monument, verified position by VRS GPS methods and updated ties.

March 29, 2017 - Found cast iron monument flush, verified position by VRS GPS methods and updated ties.

June 17, 2019 - Found cast iron monument, verified position by VRS GPS methods and updated ties prior to road construction. Removed monument.

November 4, 2019 - Reset cast iron monument flush after road construction using static GPS methods. Verified position by VRS GPS methods and updated ties.