

CERTIFICATE OF LOCATION OF GOVERNMENT CORNER

County of Anoka

State of Minnesota

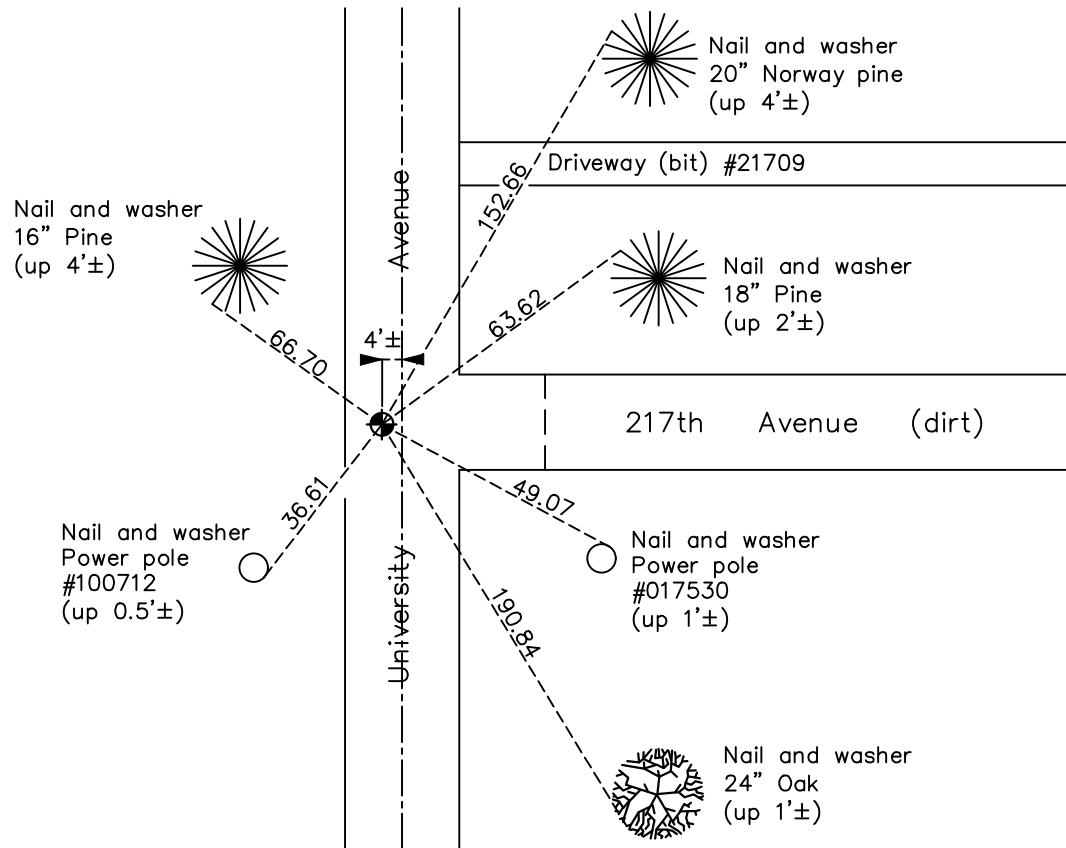
East 1/4 Corner of Sec. 12 Township 33 Range 24

On the 13th day of April, 1978, the described corner was evidenced by area resurvey

and to perpetuate the location of said corner, at the exact location thereof, a permanent marker was placed consisting of a cast iron monument

AND on the 19th day of November, 2020, said permanent marker was found flush with the surface and the ties were updated

Updated reference ties are as shown below.



Revision Date

06/09/2021

N.A.D. 1983 Coordinates
(1996 Adjustment)

County Project Coordinates	
Northing	<u>219616.6631</u>
Easting	<u>500263.0152</u>
Date	<u>3/27/01</u>

I hereby certify that this United States public land survey monument record is correct and complete to the best of my knowledge and belief.

David M Zieglmeier Date 7/29/21

David Zieglmeier Anoka County Surveyor
Minnesota License Number 46179

HISTORY OF GOVERNMENT CORNER

Page No. 45

County of Anoka

State of Minnesota

East 1/4 Corner of Sec. 12 Township 33 Range 24

CORNER HISTORY:

February 14, 1969 - Set spike in dirt road using area resurvey. Established ties to spike.

July 22, 1971 - Found cast iron monument down 0.2'± and updated ties.

July 1, 1975 - Found cast iron monument and updated ties.

April 13, 1978 - Found cast iron monument broken and replaced with a new cast iron monument down 1'± and 3'± West of centerline. Updated ties.

July 17, 1981 - Found cast iron monument and updated ties.

August 13, 1984 - Found cast iron monument and updated ties.

July 22, 1987 - Found cast iron monument and updated ties.

March 28, 1991 - Found cast iron monument and updated ties.

July 9, 1992 - Found cast iron monument and updated ties.

June 17, 1999 - Replaced solid cast iron monument with a removable top cast iron monument. Updated ties.

May 25, 2000 - Found cast iron monument and updated ties.

March 27, 2001 - Found cast iron monument and updated ties. Established NAD 1983 (1996 adj.) Anoka County project coordinates by static GPS methods.

August 31, 2011 - Found cast iron monument. Verified position by VRS GPS methods. Updated ties.

March 29, 2017 - Found cast iron monument flush. Verified position by VRS GPS methods. Updated ties.

November 19, 2020 - Found cast iron monument flush. Updated ties.