

CERTIFICATE OF LOCATION OF GOVERNMENT CORNER

County of Anoka

State of Minnesota

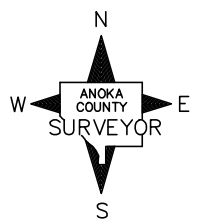
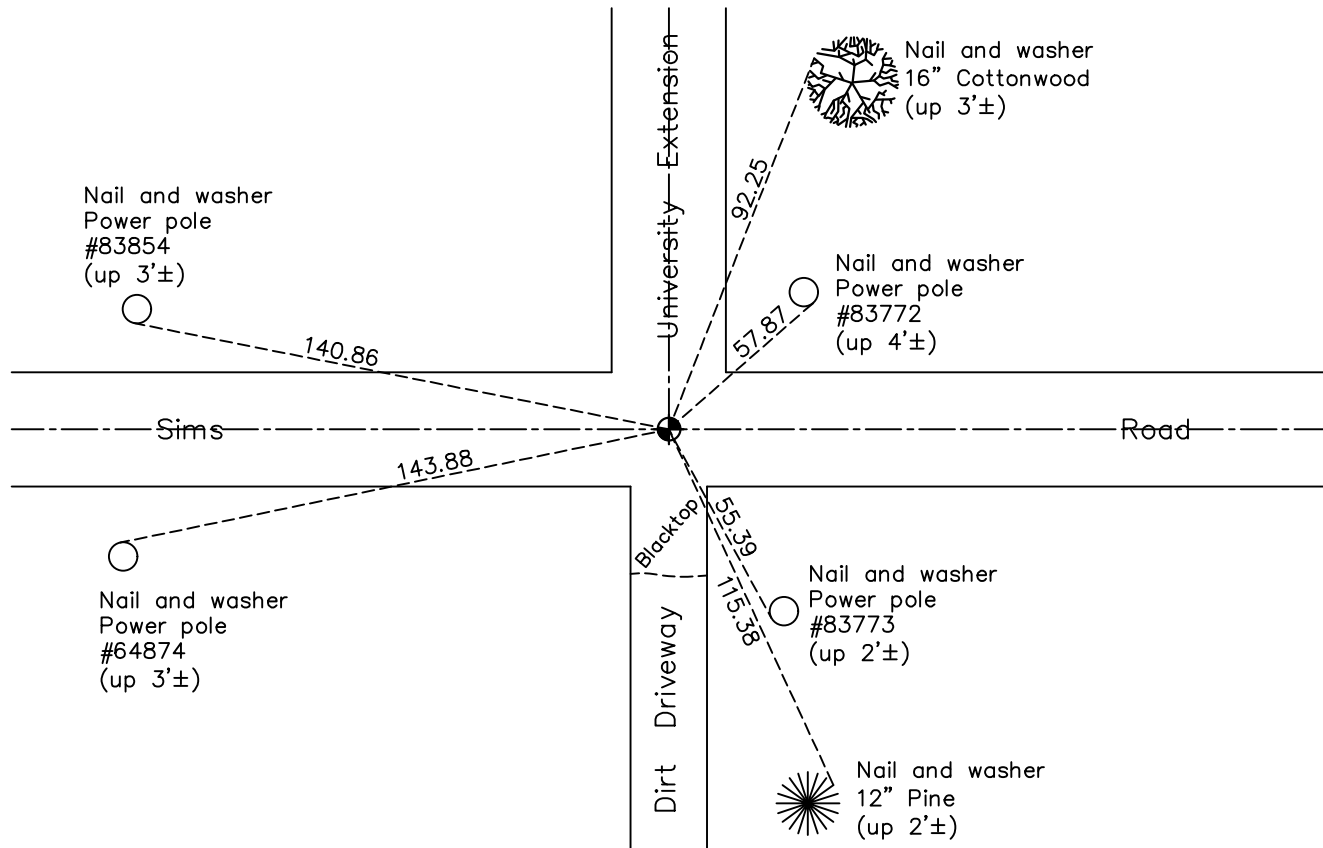
Southeast Corner of Sec. 12 Township 33 Range 24

On the 11th day of June, 1965, the described corner was evidenced by a 14"X16"
stone monument

and to perpetuate the location of said corner, at the exact location thereof, a permanent marker was placed consisting of a cast iron monument

AND on the 1st day of December, 2020, said permanent marker was found flush and the ties were updated

Updated reference ties are as shown below.



Revision Date
06/09/2021

N.A.D. 1983 Coordinates
(1996 Adjustment)

County Project Coordinates	
Northing	<u>216975.2580</u>
Easting	<u>500238.2402</u>
Date	<u>4/18/01</u>

I hereby certify that this United States public land survey monument record is correct and complete to the best of my knowledge and belief.

David M Zieglmeier Date 7/29/21

David Zieglmeier Anoka County Surveyor
Minnesota License Number 46179

HISTORY OF GOVERNMENT CORNER

Page No. 46

County of Anoka

State of Minnesota

Southeast Corner of Sec. 12 Township 33 Range 24

CORNER HISTORY:

June 11, 1965 - Found 12" x 16" field stone down 2'± in centerline/centerline of dirt roads, using old distances. Set cast iron monument down 0.3'± on top of stone. Updated ties.

June 26, 1968 - Found cast iron monument leaning. Reset using original ties. Updated ties.

July 22, 1971 - Found cast iron monument and updated ties.

July 1, 1975 - Found cast iron monument and updated ties.

June 30, 1978 - Found cast iron monument and updated ties.

December 27, 1979 - Found monument and set construction ties prior to road construction.

July 17, 1981 - Found cast iron monument and updated ties.

August 2, 1983 - Set temporary 1/2" iron pipe after construction using section breakdown and plat to the South. Updated ties.

September 14, 1983 - Found temporary 1/2" iron pipe and replaced with a cast iron monument.

August 13, 1984 - Found cast iron monument and updated ties.

July 22, 1987 - Found cast iron monument and updated ties.

July 9, 1992 - Found cast iron monument and updated ties.

October 3, 1997 - Found cast iron monument up and lowered monument. Updated ties.

May 30, 1997 - Found cast iron monument and updated ties.

May 25, 2000 - Found cast iron monument and updated ties.

April 18, 2001 - Found cast iron monument and updated ties. Established NAD 1983 (1996 adj.) Anoka County project coordinates by static GPS methods.

April 29, 2010 - Found cast iron monument, set construction ties and updated corner ties prior to road construction. Removed monument.

August 4, 2010 - Set temporary P.K. nail after road construction using construction ties. Checked position with corner ties and static GPS methods.

August 11, 2010 - Set cast iron monument using static GPS methods. Updated ties.

August 31, 2011 - Found cast iron monument. Verified position by VRS GPS methods. Updated ties.

March 2017 - Found cast iron monument flush. Verified position by VRS GPS methods. Updated ties.

December 1, 2020 - Found cast iron monument flush. Verified position by VRS GPS methods. Updated ties.