

# CERTIFICATE OF LOCATION OF GOVERNMENT CORNER

County of Anoka

State of Minnesota

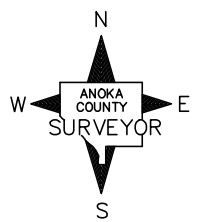
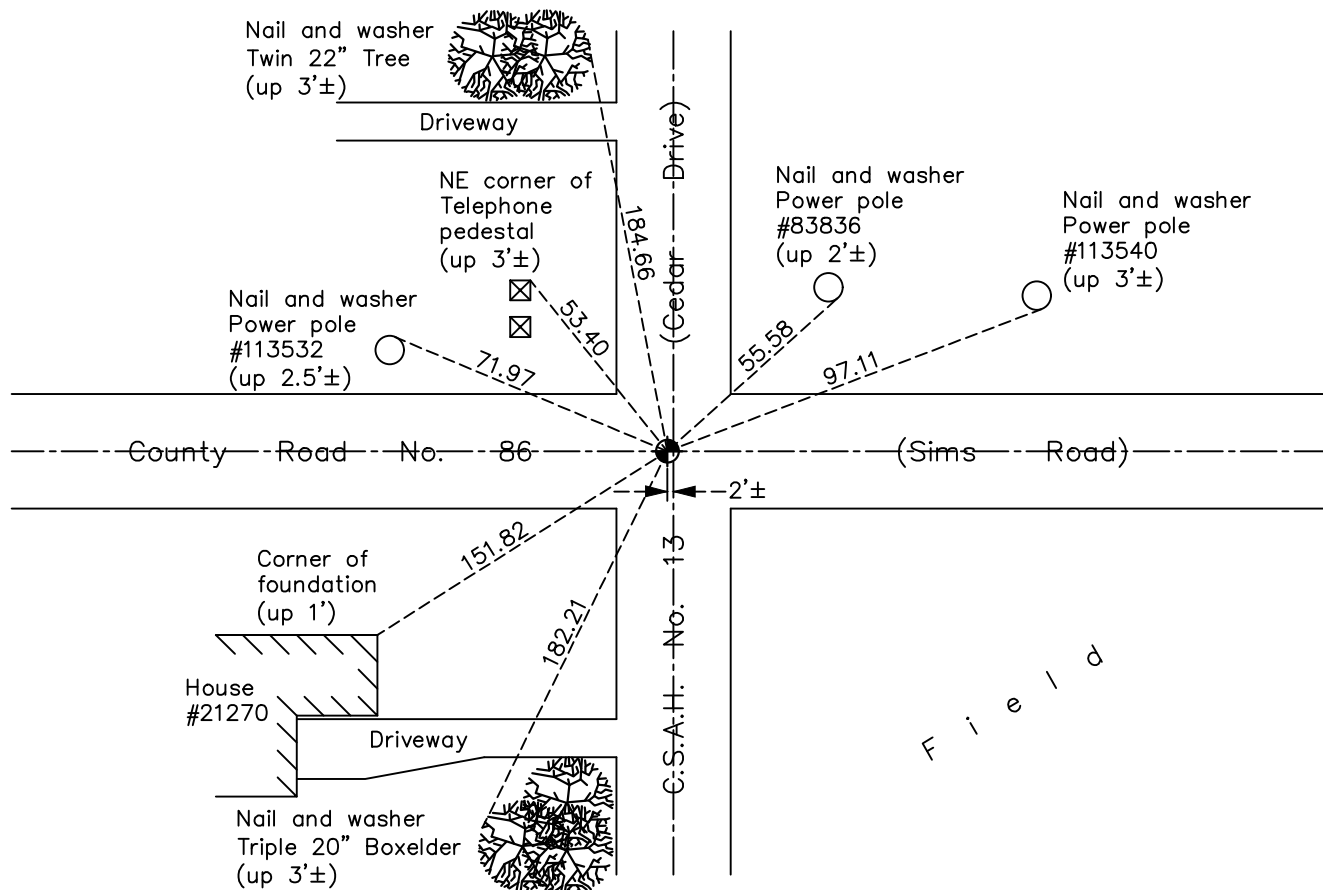
## Northwest Corner of Sec. 13 Township 33 Range 24

On the 17th day of July, 1962, the described corner was evidenced by a 16" dia. flat rock with a faint cross on top

and to perpetuate the location of said corner, at the exact location thereof, a permanent marker was placed consisting of a cast iron monument

AND on the 1st day of November, 2019, said permanent marker was Reset with a cast iron monument flush and the ties were updated

Updated reference ties are as shown below.



N.A.D. 1983 Coordinates  
(1996 Adjustment)

|                            |                    |
|----------------------------|--------------------|
| County Project Coordinates |                    |
| Northing                   | <u>216907.9211</u> |
| Easting                    | <u>494971.7166</u> |
| Date                       | <u>4/18/01</u>     |

I hereby certify that this United States public land survey monument record is correct and complete to the best of my knowledge and belief.

*David M Zieglmeier* Date 7/29/21

David Zieglmeier Anoka County Surveyor  
Minnesota License Number 46179

Revision Date  
12/2/19

# HISTORY OF GOVERNMENT CORNER

Page No. 48

County of Anoka

State of Minnesota

## Northwest Corner of Sec. 13 Township 33 Range 24

### **CORNER HISTORY:**

May 7, 1959 - Found 16" diameter flat stone with a faint cross on top down 0.5' in center lines of dirt roads. Established ties to stone.

July 17, 1962 - Found 16" dia. flat stone down 0.5' and updated ties.

September 3, 1964 - Found 16" dia. flat stone down 0.5' and updated ties.

June 11, 1965 - Set cast iron monument on top of 16" dia. flat stone after construction (CIM down 0.3'±)(Stone down 3.5'±). Updated ties.

September 11, 1968 - Set cast iron monument flush after construction and updated ties.

July 22, 1971 - Found cast iron monument and updated ties.

August 29, 1972 - Raised cast iron monument flush.

July 1, 1975 - Found cast iron monument and updated ties.

June 30, 1978 - Found cast iron monument and updated ties.

July 17, 1981 - Found cast iron monument and updated ties.

August 8, 1984 - Found cast iron monument flush and updated ties..

August 26, 1996 - Found cast iron monument and set construction ties prior to road construction.

May 27, 1997 - Found cast iron monument and updated ties.

April 18, 2001 - Found cast iron monument, established NAD 1983 (1996 adj.) Anoka County project coordinates by static GPS methods and updated ties.

September 9, 2011 - Found cast iron monument, verified position by VRS GPS methods and updated ties.

March 2017 - Found cast iron monument flush, verified position by VRS GPS methods and updated ties.

June 17, 2019 - Found cast iron monument, verified position by VRS GPS methods and updated ties prior to road construction. Removed monument.

November 1, 2019 - Set cast iron monument flush after road construction using static GPS methods. Verified position by VRS GPS methods and updated ties.