

CERTIFICATE OF LOCATION OF GOVERNMENT CORNER

County of Anoka

State of Minnesota

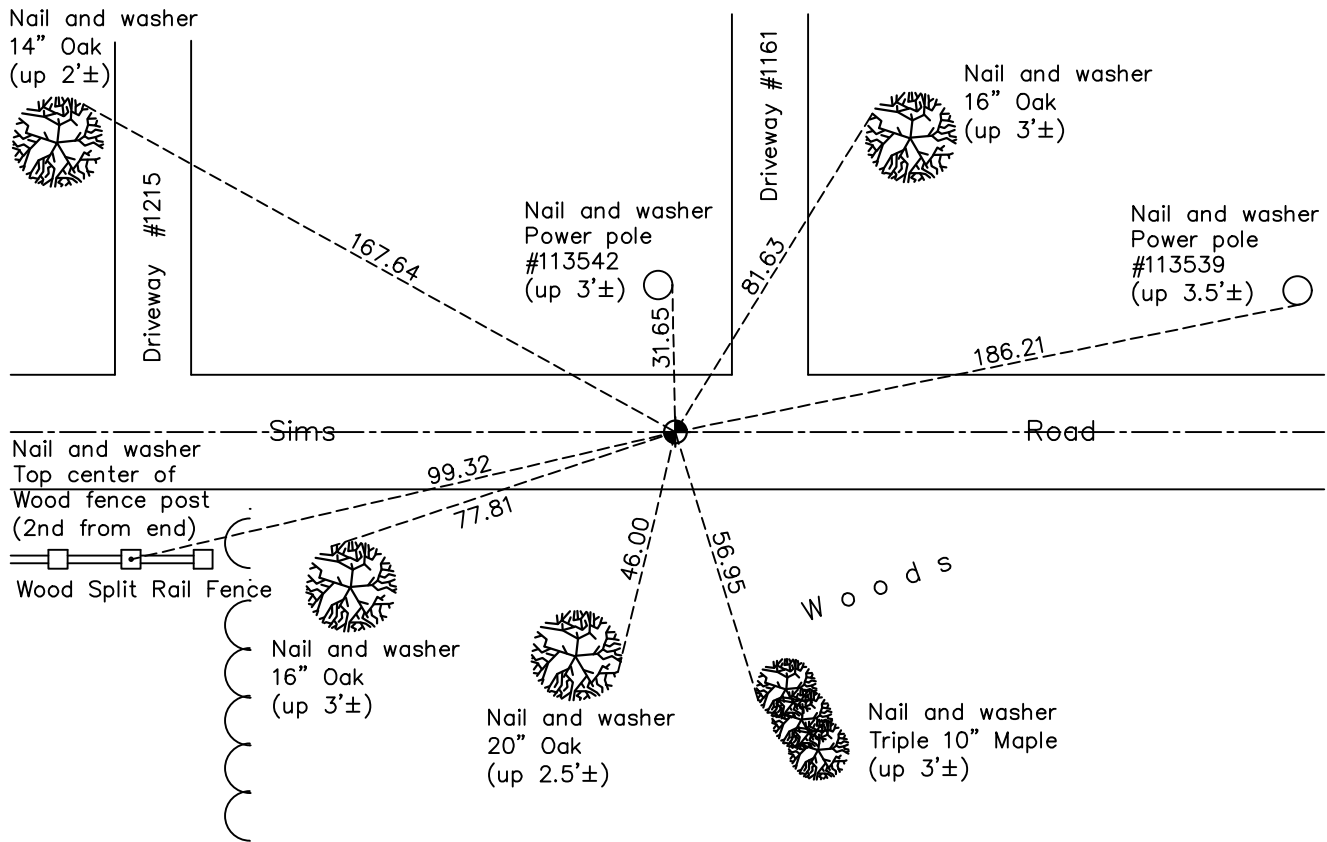
South 1/4 Corner of Sec. 11 Township 33 Range 24

On the 12th day of March, 1973, the described corner was evidenced by area resurvey

and to perpetuate the location of said corner, at the exact location thereof, a permanent marker was placed consisting of a cast iron monument

AND on the 2nd day of December, 2020, said permanent marker was found flush and the ties were updated

Updated reference ties are as shown below.



Revision Date

06/09/2021

N.A.D. 1983 Coordinates
(1996 Adjustment)

County Project Coordinates	
Northing	<u>216905.0434</u>
Easting	<u>492337.8754</u>
Date	<u>3/26/01</u>

I hereby certify that this United States public land survey monument record is correct and complete to the best of my knowledge and belief.

David M Zieglmeier Date 7/29/21

David Zieglmeier Anoka County Surveyor
Minnesota License Number 46179

HISTORY OF GOVERNMENT CORNER

Page No. 49

County of Anoka

State of Minnesota

South 1/4 Corner of Sec. 11 Township 33 Range 24

CORNER HISTORY:

March 12, 1973 - Set 1/2" iron pipe using area resurvey. Established ties to iron pipe.

April 12, 1973 - Found 1/2" iron pipe and replaced with a cast iron monument. Updated ties.

July 1, 1975 - Found cast iron monument and updated ties.

June 30, 1978 - Found cast iron monument and updated ties.

July 20, 1981 - Found cast iron monument and updated ties.

August 13, 1984 - Found cast iron monument and updated ties.

July 29, 1987 - Found cast iron monument and updated ties.

March 28, 1991 - Found cast iron monument and updated ties.

July 9, 1992 - Found cast iron monument and updated ties.

May 17, 1996 - Reset cast iron monument after road construction. Updated ties.

June 4, 1997 - Found cast iron monument and updated ties.

March 26, 2001 - Found cast iron monument and updated ties. Established NAD 1983 (1996 adj.) Anoka County project coordinates by static GPS methods.

September 20, 2011 - Found cast iron monument and updated ties.

May 18, 2015 - Found cast iron monument, verified position by VRS GPS methods, set construction ties and updated corner ties prior to road construction. Loosened monument top.

August 31, 2015 - Found cast iron monument down after construction and raised flush.

March 30, 2017 - Found cast iron monument flush. Verified position by VRS GPS methods. Updated ties.

December 2, 2020 - Found cast iron monument flush. Verified position by VRS GPS methods. Updated ties.