

CERTIFICATE OF LOCATION OF GOVERNMENT CORNER

County of Anoka

State of Minnesota

Witness Corner of Sec. 11 Township 33 Range 24

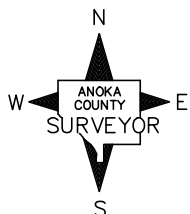
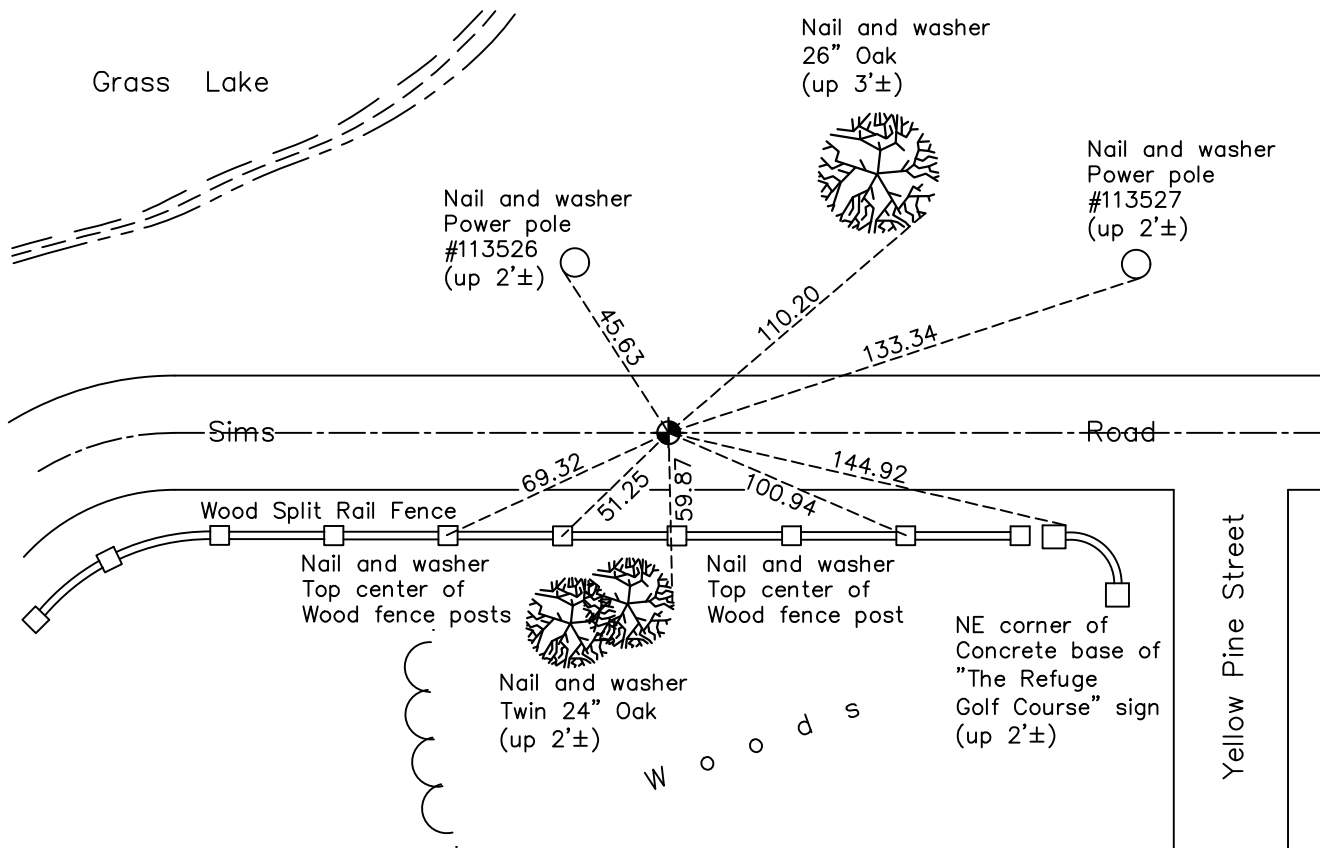
(on south line of section)

On the 14th day of March, 1973, the described corner was evidenced by area resurvey

and to perpetuate the location of said corner, at the exact location thereof, a permanent marker was placed consisting of a cast iron monument

AND on the 2nd day of December, 2020, said permanent marker was found flush and the ties were updated

Updated reference ties are as shown below.



Revision Date

06/09/2021

N.A.D. 1983 Coordinates
(1996 Adjustment)

County Project Coordinates

Northing 216904.2272

Easting 491502.6672

Date 3/26/01

I hereby certify that this United States public land survey monument record is correct and complete to the best of my knowledge and belief.

David M Zieglmeier Date 7/29/21

David Zieglmeier Anoka County Surveyor

Minnesota License Number 46179

HISTORY OF GOVERNMENT CORNER

Page No. 50

County of Anoka

State of Minnesota

Witness Corner of Sec. 11 Township 33 Range 24
(on south line of section)

CORNER HISTORY:

March 14, 1973 - Set cast iron monument down 8"± in road using area resurvey. Established ties to monument.

July 1, 1975 - Found cast iron monument and updated ties.

June 30, 1978 - Found cast iron monument and updated ties.

July 20, 1981 - Found cast iron monument and updated ties.

August 13, 1984 - Found cast iron monument and updated ties.

July 29, 1987 - Found cast iron monument and updated ties.

March 28, 1991 - Found cast iron monument and updated ties.

July 13, 1992 - Found cast iron monument and updated ties.

June 25, 1997 - Reset cast iron monument and updated ties.

March 26, 2001 - Found cast iron monument and updated ties. Established NAD 1983 (1996 adj.) Anoka County project coordinates by static GPS methods.

September 20, 2011 - Found cast iron monument and updated ties.

May 18, 2015 - Found cast iron monument, verified position by VRS GPS methods and updated corner ties prior to road construction. Monument broke during Loosening of monument top.

May 19, 2015 - Replaced broken cast iron monument with new cast iron monument. Loosened monument top.

August 31, 2015 - Found cast iron monument down after construction and raised flush.

March 30, 2017 - Found cast iron monument flush. Verified position by VRS GPS methods. Updated ties.

December 2, 2020 - Found cast iron monument flush. Verified position by VRS GPS methods. Updated ties.