

CERTIFICATE OF LOCATION OF GOVERNMENT CORNER

County of Anoka

State of Minnesota

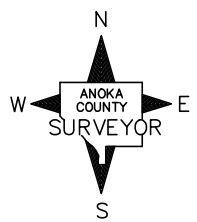
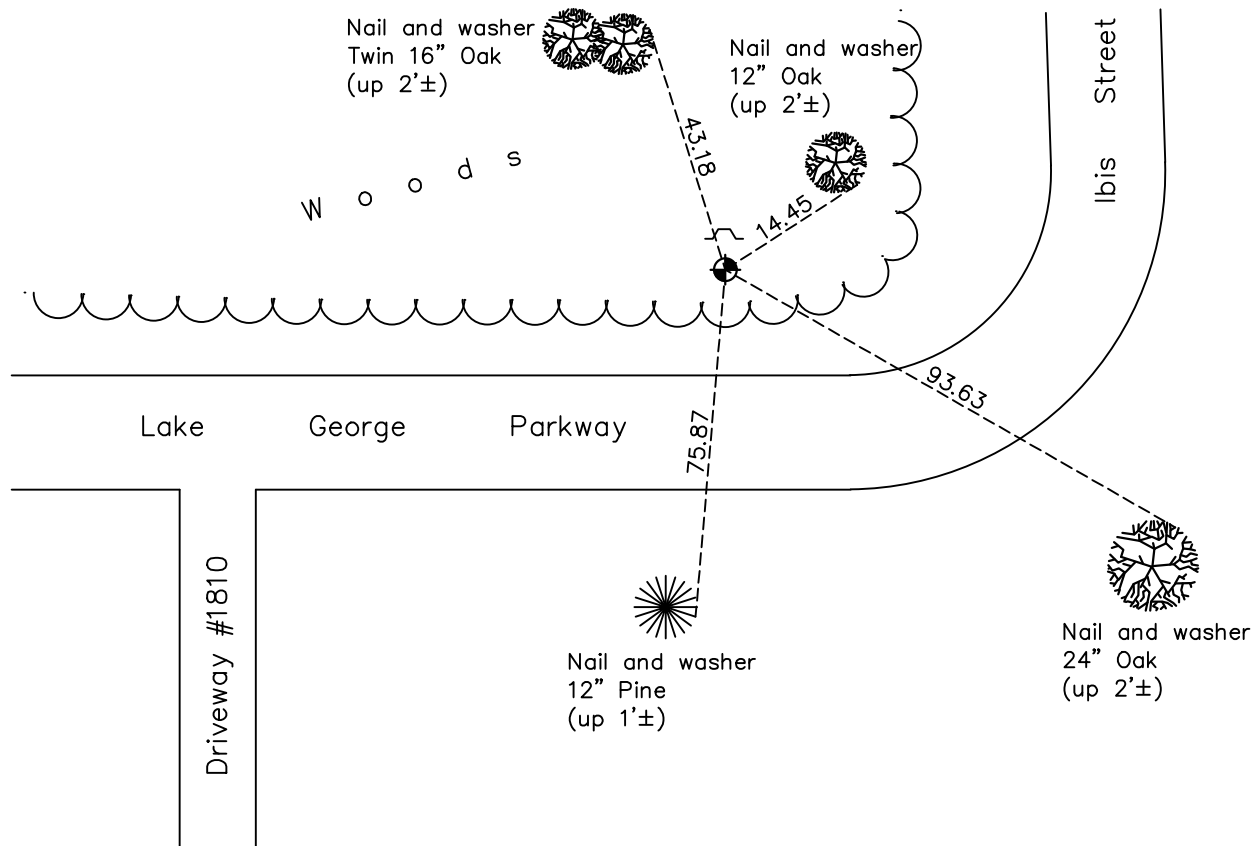
Witness Corner of Sec. 15 Township 33 Range 24
(on north line of section)

On the 19th day of March, 1977, the described corner was evidenced by area resurvey

and to perpetuate the location of said corner, at the exact location thereof, a permanent marker was placed consisting of a cast iron monument with a sign and post on the north side

AND on the 25th day of November, 2020, said permanent marker was found down 1.5'± and the ties were updated

Updated reference ties are as shown below.



Revision Date
06/09/2021

N.A.D. 1983 Coordinates
(1996 Adjustment)

County Project Coordinates	
Northing	<u>216896.8426</u>
Easting	<u>488383.9561</u>
Date	<u>5/14/01</u>

I hereby certify that this United States public land survey monument record is correct and complete to the best of my knowledge and belief.

David M Zieglmeier Date 7/29/21

David Zieglmeier Anoka County Surveyor
Minnesota License Number 46179

HISTORY OF GOVERNMENT CORNER

Page No. 51

County of Anoka

State of Minnesota

Witness Corner of Sec. 15 Township 33 Range 24
(on north line of section)

CORNER HISTORY:

March 19, 1973 - Set cast iron monument using area resurvey. Established ties to monument. set sign and post 1/2'± north of monument.

June 30, 1975 - Found cast iron monument and updated ties.

September 14, 1977 - Found cast iron monument. Updated ties prior to road construction. Removed monument.

June 30, 1978 - Reset cast iron monument down 1'± after road construction. Updated ties.

July 27, 1981 - Found cast iron monument and updated ties.

August 13, 1984 - Found cast iron monument and updated ties.

July 29, 1987 - Found cast iron monument and updated ties.

July 13, 1992 - Found cast iron monument and updated ties.

June 23, 1997 - Found cast iron monument and updated ties.

May 14, 2001 - Found cast iron monument and updated ties. Established NAD 1983 (1996 adj.) Anoka County project coordinates by static GPS methods.

September 14, 2011 - Found cast iron monument down 1.5'± and updated ties.

April 4, 2017 - Found cast iron monument down 1.5'± and updated ties.

November 25, 2020 - Found cast iron monument down 1.5'± and updated ties.