

CERTIFICATE OF LOCATION OF GOVERNMENT CORNER

County of Anoka

State of Minnesota

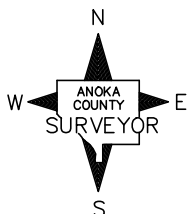
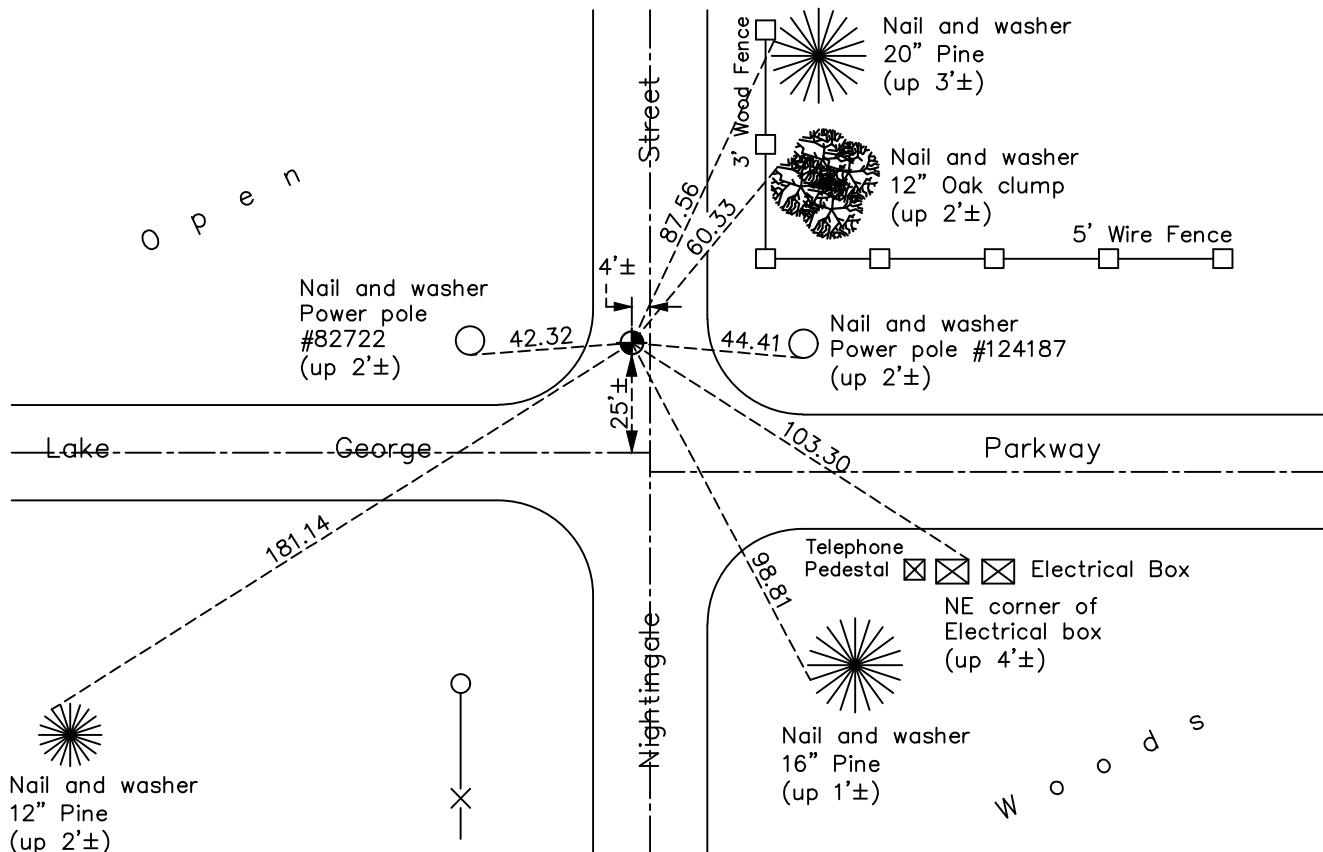
South 1/4 Corner of Sec. 10 Township 33 Range 24

On the 21st day of July, 1960, the described corner was evidenced by a concrete monument

and to perpetuate the location of said corner, at the exact location thereof, a permanent marker was placed consisting of a cast iron monument

AND on the 2nd day of December, 2020, said permanent marker was found flush and the the ties were updated

Updated reference ties are as shown below.



Revision Date

06/09/2021

N.A.D. 1983 Coordinates
(1996 Adjustment)

| | |
|----------------------------|-------------|
| County Project Coordinates | |
| Northing | 216891.7126 |
| Easting | 487046.8947 |
| Date | 3/30/01 |

I hereby certify that this United States public land survey monument record is correct and complete to the best of my knowledge and belief.

David M Zieglmeier Date 7/29/21

David Zieglmeier Anoka County Surveyor
Minnesota License Number 46179

HISTORY OF GOVERNMENT CORNER

Page No. 52

County of Anoka

State of Minnesota

South 1/4 Corner of Sec. 10 Township 33 Range 24

CORNER HISTORY:

September 20, 1945 - Harvey Cartwright set a concrete monument using East/West fence line and distance from West according to old survey and platting. Established ties to concrete monument.

July 21, 1960 - Found concrete monument down 1.5'± and updated ties.

May 18, 1962 - Found concrete monument down 33" using 2 remaining 1960 ties. Set cast iron monument flush with blacktop on top of concrete monument. Updated ties.

July 29, 1965 - Found cast iron monument and updated ties.

June 25, 1968 - Found cast iron monument and updated ties.

July 27, 1971 - Found cast iron monument and updated ties.

July 1, 1975 - Found cast iron monument and updated ties.

June 30, 1978 - Found cast iron monument and updated ties.

July 20, 1981 - Found cast iron monument and updated ties.

August 13, 1984 - Found cast iron monument and updated ties.

July 22, 1987 - Found cast iron monument and updated ties.

July 9, 1992 - Found cast iron monument and updated ties.

August 18, 1994 - Found cast iron monument and updated ties.

July 17, 1995 - Reset cast iron monument after road construction and updated ties.

June 3, 1997 - Found cast iron monument and updated ties.

March 30, 2001 - Established NAD 1983 (1996 adj.) Anoka County project coordinates by static GPS methods.

May 14, 2001 - Found cast iron monument and updated ties.

September 12, 2011 - Found cast iron monument and updated ties.

May 18, 2015 - Found cast iron monument, verified position by VRS GPS methods and updated corner ties prior to road construction. Loosened monument top.

August 28, 2015 - Found cast iron monument and raised flush with road after road construction.

April 4, 2017 - Found cast iron monument flush. Verified position by VRS GPS methods. Updated ties.

December 2, 2020 - Found cast iron monument flush. Verified position by VRS GPS methods. Updated ties.