

# CERTIFICATE OF LOCATION OF GOVERNMENT CORNER

County of Anoka

State of Minnesota

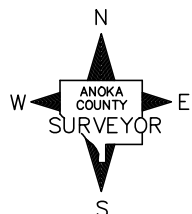
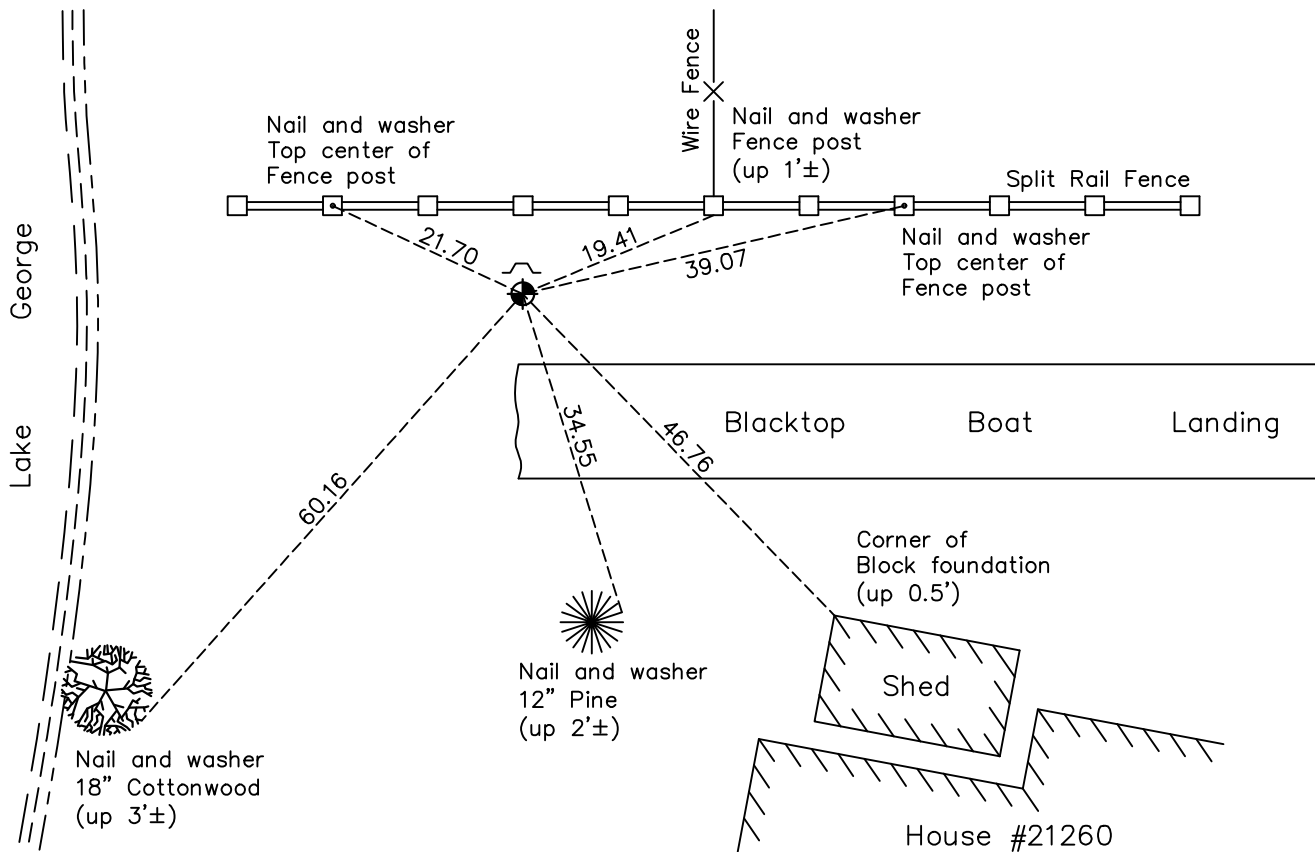
## Meander Corner of Sec. 10 Township 33 Range 24 (on south line of SW1/4)

On the 3rd day of December, 1963, the described corner was evidenced by a concrete monument

and to perpetuate the location of said corner, at the exact location thereof, a permanent marker was placed consisting of a cast iron monument

AND on the 25th day of November, 2020, said permanent marker was found down 0.5'± with a sign and post on the north side and the ties were updated.

Updated reference ties are as shown below.



Revision Date

06/09/2021

N.A.D. 1983 Coordinates  
(1996 Adjustment)

County Project Coordinates

Northing 216904.4114

Easting 484936.9887

Date 5/14/01

I hereby certify that this United States public land survey monument record is correct and complete to the best of my knowledge and belief.

*David M Zieglmeier* Date 8/30/21

David Zieglmeier Anoka County Surveyor

Minnesota License Number 46179

# HISTORY OF GOVERNMENT CORNER

Page No. 53

County of Anoka

State of Minnesota

## Meander Corner of Sec. 10 Township 33 Range 24 (on south line of SW1/4)

### **CORNER HISTORY:**

September 20, 1945 - Harvey Cartwright set a concrete monument using lot stakes and plat of Shady Oaks. Established ties to concrete monument.

December 3, 1963 - Found 4" square concrete monument down 1.7'± and updated ties. Set iron pipe on east side of monument.

July 19, 1965 - Found concrete monument and updated ties.

June 27, 1968 - Replaced iron pipe with cast iron monument down 0.3'± and updated ties.

July 2, 1975 - Found cast iron monument and updated ties.

July 5, 1978 - Found cast iron monument and updated ties.

July 24, 1982 - Found cast iron monument and updated ties.

August 14, 1984 - Found cast iron monument and updated ties.

July 22, 1987 - Found cast iron monument and updated ties.

July 9, 1992 - Found cast iron monument and updated ties.

June 10, 1997 - Found cast iron monument and updated ties.

May 14, 2001 - Found cast iron monument and updated ties. Established NAD 1983 (1996 adj.) Anoka County project coordinates by static GPS methods.

September 12, 2011 - Found cast iron monument. Verified position by VRS GPS methods. Updated ties. Set sign and post on north side of monument on 4/6/2012.

April 6, 2017 - Found cast iron monument down 0.5'± w/sign and post on the north side. Updated ties.

November 25, 2020 - Found cast iron monument down 0.5'± w/sign and post on the north side. Verified position by VRS GPS methods. Updated ties.