

CERTIFICATE OF LOCATION OF GOVERNMENT CORNER

County of Anoka

State of Minnesota

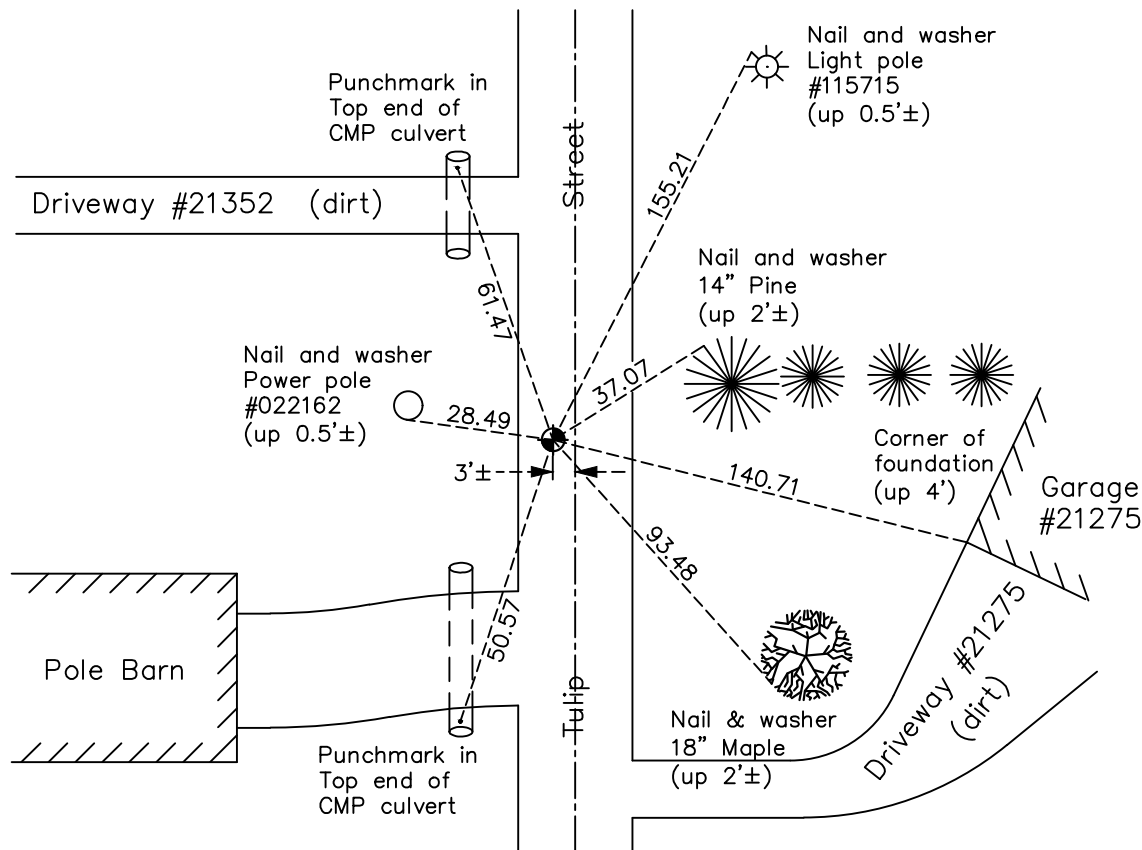
South 1/4 Corner of Sec. 8 Township 33 Range 24

On the 19th day of June, 1961, the described corner was evidenced by an iron bar
inside a 1 1/2" iron pipe

and to perpetuate the location of said corner, at the exact location thereof, a permanent marker
 was placed consisting of a cast iron monument

AND on the 7th day of December, 2020, said permanent marker was found flush and the
ties were updated.

Updated reference ties are as shown below.



Revision Date

06/09/2021

N.A.D. 1983 Coordinates
 (1996 Adjustment)

County Project Coordinates	
Northing	<u>217043.1286</u>
Easting	<u>476514.0646</u>
Date	<u>5/09/01</u>

I hereby certify that this United States public land survey monument record is correct and complete to the best of my knowledge and belief.

David M Zieglmeier Date 7/29/21

David Zieglmeier Anoka County Surveyor
 Minnesota License Number 46179

HISTORY OF GOVERNMENT CORNER

Page No. 56

County of Anoka

State of Minnesota

South 1/4 Corner of Sec. 8 Township 33 Range 24

CORNER HISTORY:

June 19, 1961 - Found 1-1/2" iron pipe w/iron bar inside both down 0.8'± using remains of old bearing tree from 1883. Updated ties.

September 8, 1965 - Found 1-1/2" iron pipe w/iron bar inside both down 0.8'± and updated ties.

June 24, 1968 - Found iron pipe/bar and replaced with a cast iron monument down 0.8'±. Updated ties.

August 6, 1971 - Found cast iron monument and updated ties.

July 3, 1975 - Reset cast iron monument down 0.5'± in road using plat and remaining tie. Updated ties.

July 5, 1978 - Found cast iron monument and updated ties.

July 22, 1981 - Found cast iron monument and updated ties.

August 10, 1984 - Found cast iron monument and updated ties.

July 27, 1987 - Found cast iron monument and updated ties.

July 8, 1992 - Found cast iron monument and updated ties.

June 17, 1999 - Replaced solid cast iron monument with a removable top cast iron monument. Updated ties.

May 9, 2001 - Found cast iron monument and updated ties. Established NAD 1983 (1996 adj.) Anoka County project coordinates by static GPS methods.

December 30, 2011 - Found cast iron monument down 0.3'± and raised flush. Verified position by VRS GPS methods. Updated ties.

April 13, 2017 - Found cast iron monument flush. Verified position by VRS GPS methods. Updated ties.

December 7, 2020 - Found cast iron monument flush. Verified position by VRS GPS methods. Updated ties.