

CERTIFICATE OF LOCATION OF GOVERNMENT CORNER

County of Anoka

State of Minnesota

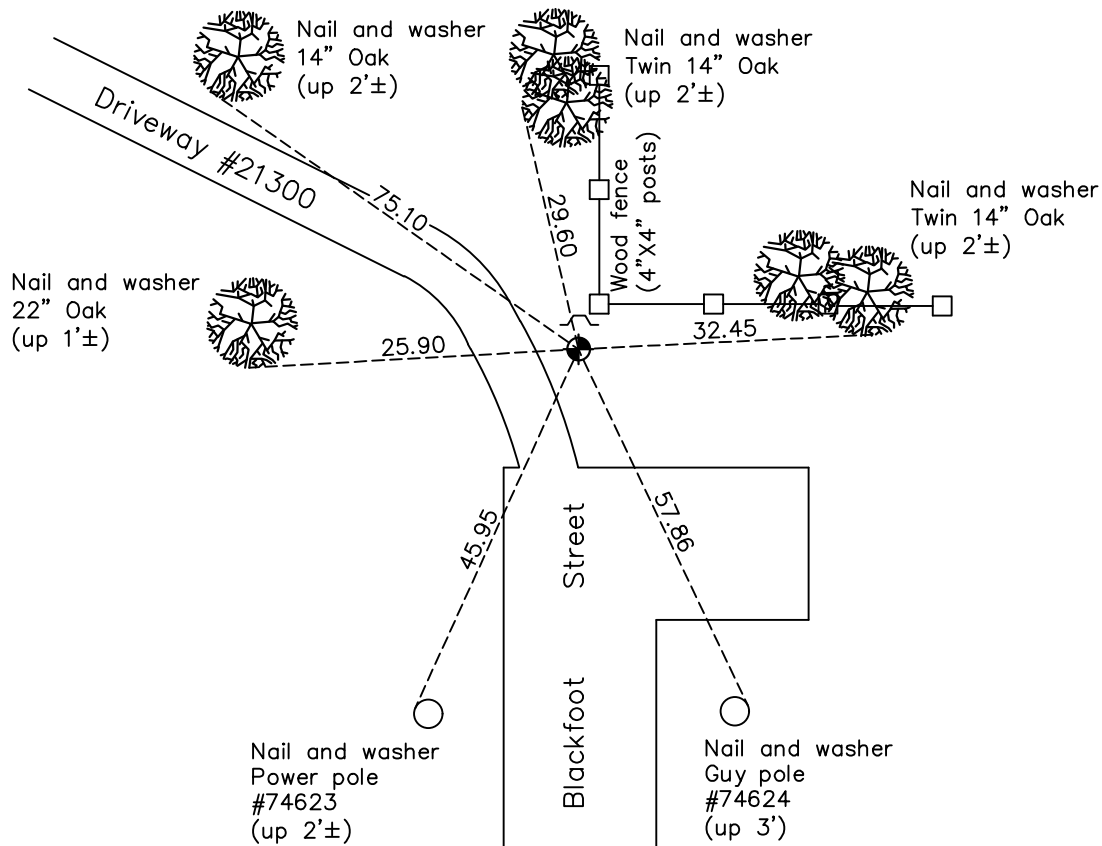
Southwest Corner of Sec. 8 Township 33 Range 24

On the 19th day of June, 1961, the described corner was evidenced by a concrete monument

and to perpetuate the location of said corner, at the exact location thereof, a permanent marker was placed consisting of a cast iron monument with a sign and post on the north side

AND on the 4th day of December, 2020, said permanent marker was found down 0.5'± and the ties were updated

Updated reference ties are as shown below.



Revision Date

06/09/2021

N.A.D. 1983 Coordinates
(1996 Adjustment)

County Project Coordinates	
Northing	<u>217123.5989</u>
Easting	<u>473905.3598</u>
Date	<u>3/30/01</u>

I hereby certify that this United States public land survey monument record is correct and complete to the best of my knowledge and belief.

David M Zieglmeier Date 7/29/21

David Zieglmeier Anoka County Surveyor
Minnesota License Number 46179

HISTORY OF GOVERNMENT CORNER

Page No. 59

County of Anoka

State of Minnesota

Southwest Corner of Sec. 8 Township 33 Range 24

CORNER HISTORY:

June 19, 1961 - Found concrete monument down 0.5'± w/iron pipe on the North edge and an iron bar on the South edge. Updated ties.

July 22, 1965 - Found concrete monument down 0.5'± using 1961 ties. Updated ties.

June 24, 1968 - Found concrete monument down 0.3'± and updated ties.

August 5, 1971 - Found concrete monument and updated ties.

July 3, 1975 - Found concrete monument and replaced with a cast iron monument flush. Updated ties.

July 5, 1978 - Found cast iron monument and updated ties.

July 22, 1981 - Found cast iron monument and updated ties.

August 10, 1984 - Found cast iron monument and updated ties.

July 24, 1987 - Found cast iron monument and updated ties.

July 7, 1992 - Found cast iron monument and updated ties.

April 4, 1995 - Found cast iron monument and updated ties.

June 17, 1997 - Found cast iron monument and updated ties.

August 2, 1999 - Replaced broken cast iron monument and updated ties.

March 30, 2001 - Established NAD 1983 (1996 adj.) Anoka County project coordinates by static GPS methods.

April 30, 2001 - Found cast iron monument and updated ties.

January 17, 2012 - Found cast iron monument down 0.5'±. Verified position by VRS GPS methods. Updated ties.

April 19, 2017 - Found cast iron monument down 0.5'±. Verified position by VRS GPS methods. Updated ties.

December 4, 2020 - Found cast iron monument down 0.5'±. Verified position by VRS GPS methods. Updated ties.