

# CERTIFICATE OF LOCATION OF GOVERNMENT CORNER

County of Anoka

State of Minnesota

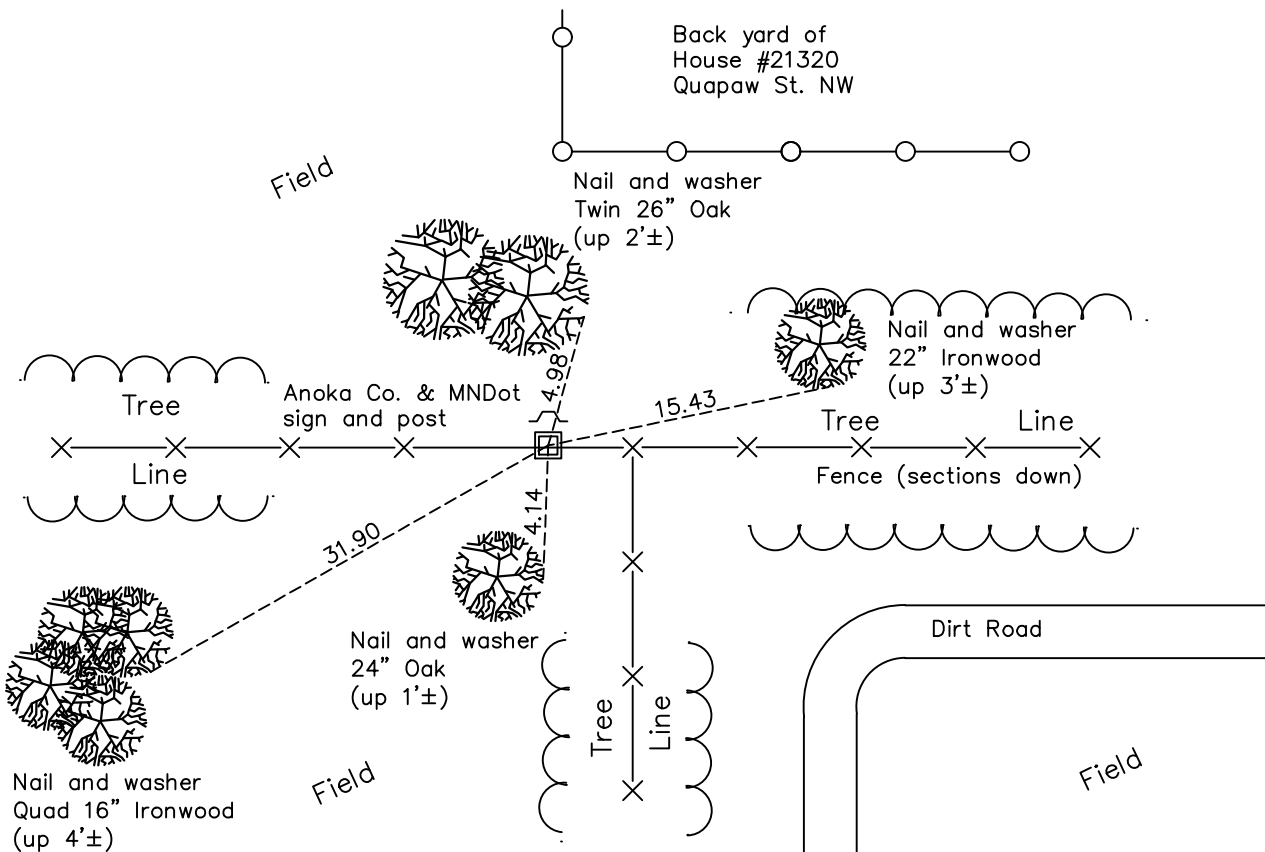
## Northwest Corner of Sec. 18 Township 33 Range 24

On the 5th day of May, 1967, the described corner was evidenced by an old spike at the location of resurvey

and to perpetuate the location of said corner, at the exact location thereof, a permanent marker was placed consisting of a 2"X4' square steel Telespar monument with "County Surveyor" cap and punchmark and a sign and post on the north side

AND on the 10th day of December, 2020, said permanent marker was found with a sign and post on the north side and the ties were updated

Updated reference ties are as shown below.



Revision Date

06/09/2021

N.A.D. 1983 Coordinates  
(1996 Adjustment)

County Project Coordinates

Northing 217165.2235

Easting 468667.6908

Date 5/08/01

I hereby certify that this United States public land survey monument record is correct and complete to the best of my knowledge and belief.

*David M Zieglmeier* Date 7/30/21

David Zieglmeier Anoka County Surveyor

Minnesota License Number 46179

# HISTORY OF GOVERNMENT CORNER

Page No. 60A

County of Anoka

State of Minnesota

## Northwest Corner of Sec. 18 Township 33 Range 24

### **CORNER HISTORY:**

May 5, 1967 - Found old spike at location of resurvey. Updated ties.

June 21, 1989 - Set 1/2" iron pipe in the trunk base of a 20" Oak. Updated ties.

June 18, 1997 - Found 1/2" iron pipe and updated ties.

May 8, 2001 - Found 1/2" iron pipe and updated ties. Established NAD 1983 (1996 adj.) Anoka County project coordinates by static GPS methods.

January 18, 2012 - Found 1/2" iron pipe in ground (oak tree gone) up 0.2'± with MNDot sign and post on the South side. Updated ties.

June 24, 2013 - Replaced 1/2" iron pipe with a 2" X 4' square steel Telspar monument w/punch marked cap using static GPS methods. Updated ties. Set sign and post on the North side.

April 27, 2017 - Found 2" square steel Telspar monument w/sign and post on the North side. Updated ties.

December 10, 2020 - Found 2" square steel Telspar monument w/sign and post on the North side. Updated ties.