

# CERTIFICATE OF LOCATION OF GOVERNMENT CORNER

County of Anoka

State of Minnesota

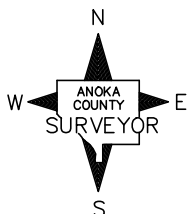
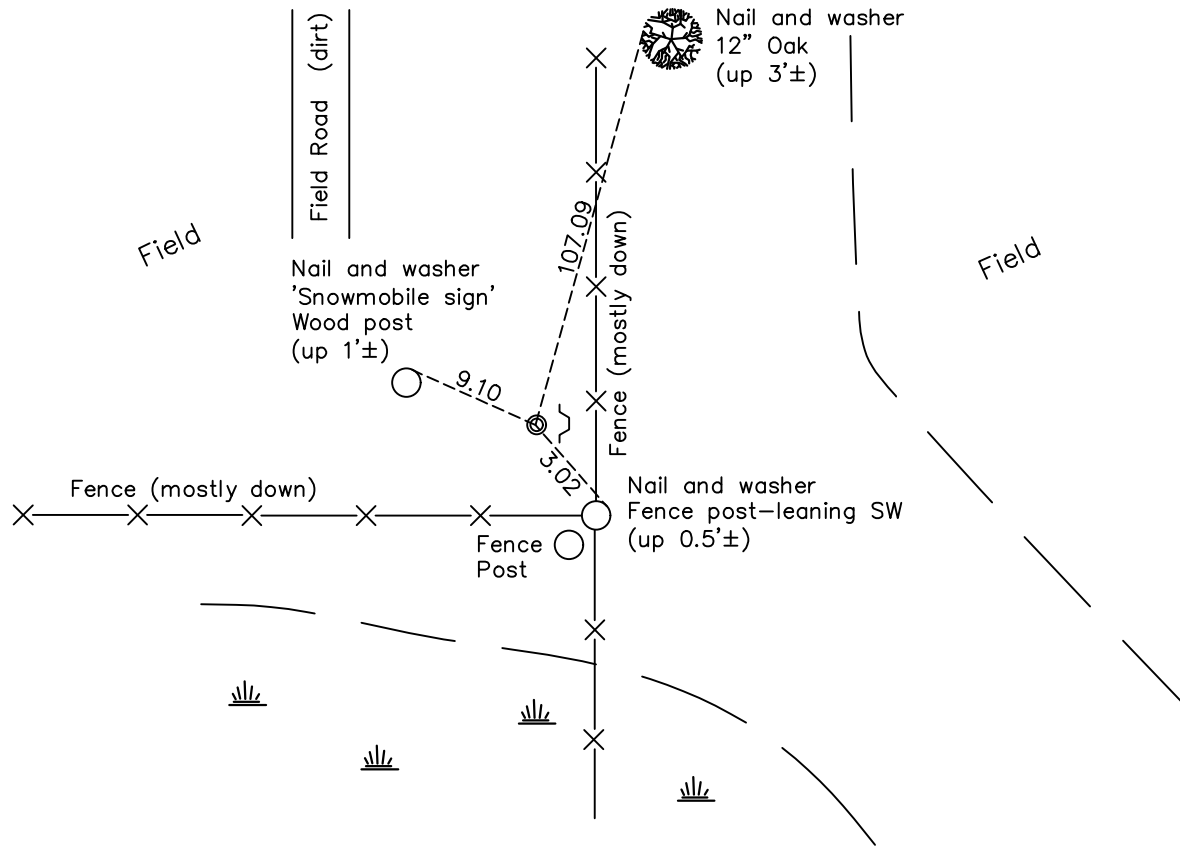
## West 1/4 Corner of Sec. 18 Township 33 Range 24

On the 11th day of February, 1966, the described corner was evidenced by a 1/2" iron pipe set by Cartwright

and to perpetuate the location of said corner, at the exact location thereof, a permanent marker was placed consisting of 1/2" pinched iron pipe with a MNDot sign and post on the east side

AND on the 8th day of December, 2020, said permanent marker was found down 0.5'± and the ties were updated.

Updated reference ties are as shown below.



Revision Date

06/10/2020

N.A.D. 1983 Coordinates  
(1996 Adjustment)

| County Project Coordinates |                    |
|----------------------------|--------------------|
| Northing                   | <u>214541.4154</u> |
| Easting                    | <u>468657.3642</u> |
| Date                       | <u>6/29/01</u>     |

I hereby certify that this United States public land survey monument record is correct and complete to the best of my knowledge and belief.

*David M Zieglmeier* Date 7/30/21

David Zieglmeier Anoka County Surveyor  
Minnesota License Number 46179

# HISTORY OF GOVERNMENT CORNER

Page No. 60B

County of Anoka

State of Minnesota

West 1/4 Corner of Sec. 18 Township 33 Range 24

## **CORNER HISTORY:**

February 11, 1966 - Found 1/2" iron pipe set by Harvey Cartwright and updated the ties.

July 10, 1985 - Found 1/2" iron pipe and updated ties.

July 10, 1989 - Found 1/2" iron pipe and updated ties.

June 30, 1997 - Found 1/2" iron pipe and updated ties.

June 29, 2001 - Established NAD 1983 (1996 adj.) Anoka County project coordinates by static GPS methods.

January 26, 2012 - Found 1/2" pinched end iron pipe down 0.5'± with MNDot sign and post on the East side. Verified position by VRS GPS methods. Updated ties.

May 2, 2017 - Found 1/2" pinched end iron pipe down 0.5'± w/sign and post on the East side. Updated ties.

December 8, 2020 - Found 1/2" pinched end iron pipe down 0.5'± with MNDot sign and post on the East side. Verified position by VRS GPS methods. Updated ties.