

CERTIFICATE OF LOCATION OF GOVERNMENT CORNER

County of Anoka

State of Minnesota

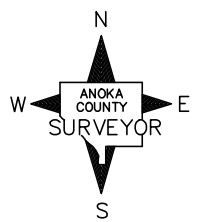
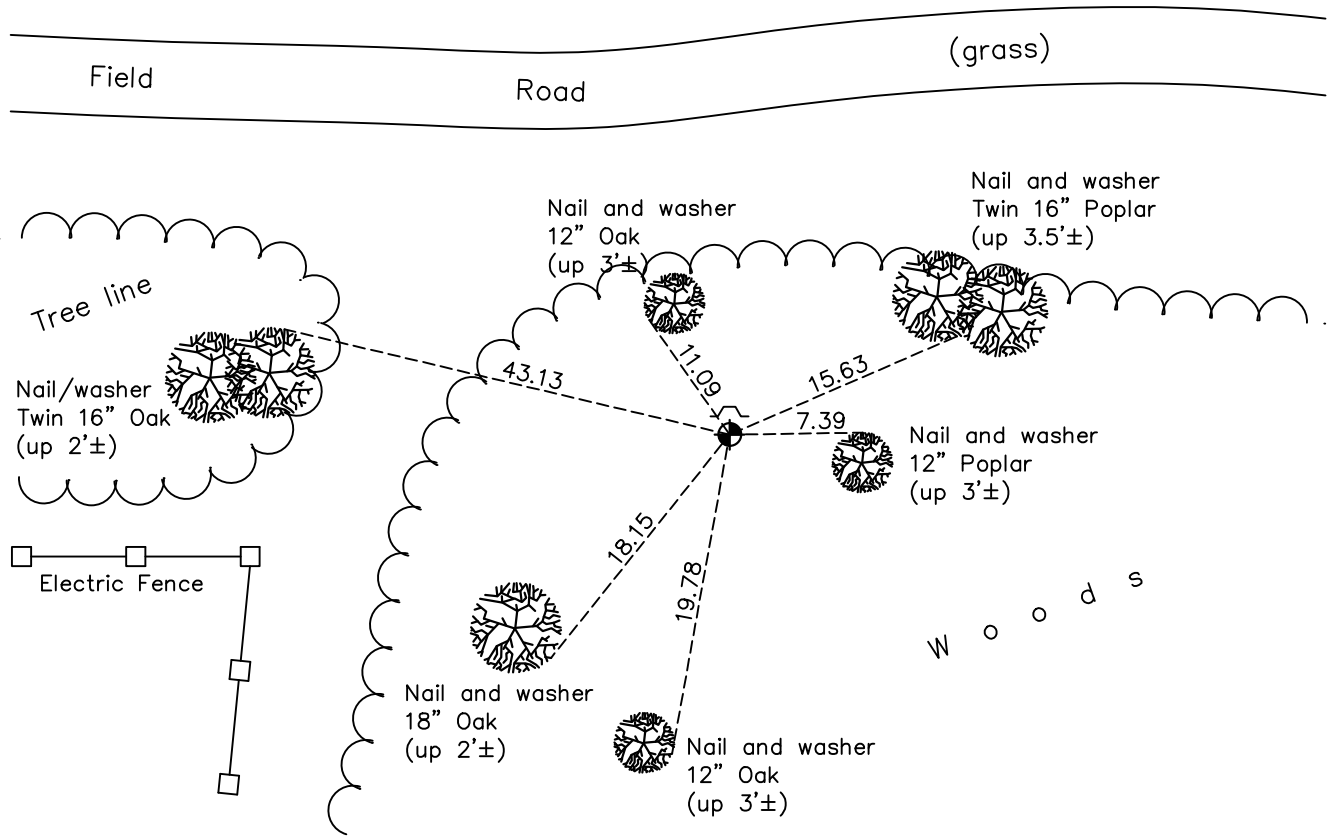
West 1/4 Corner of Sec. 17 Township 33 Range 24

On the 15th day of September, 1964, the described corner was evidenced by unknown

and to perpetuate the location of said corner, at the exact location thereof, a permanent marker was placed consisting of a cast iron monument with a sign and post on the north side

AND on the 8th day of December, 2020, said permanent marker was found flush and the ties were updated

Updated reference ties are as shown below.



Revision Date
06/09/2021

N.A.D. 1983 Coordinates
(1996 Adjustment)

County Project Coordinates	
Northing	<u>214500.2327</u>
Easting	<u>473943.1777</u>
Date	<u>3/30/01</u>

I hereby certify that this United States public land survey monument record is correct and complete to the best of my knowledge and belief.

David M Zieglmeier Date 7/30/21

David Zieglmeier Anoka County Surveyor
Minnesota License Number 46179

HISTORY OF GOVERNMENT CORNER

Page No. 61

County of Anoka

State of Minnesota

West 1/4 Corner of Sec. 17 Township 33 Range 24

CORNER HISTORY:

September 15, 1964 - Set cast iron monument flush using area resurvey. Established ties to monument.

July 29, 1965 - Found cast iron monument w/sign and post 1'± North. Updated ties.

June 28, 1968 - Found cast iron monument and updated ties.

August 5, 1971 - Found cast iron monument and updated ties.

July 17, 1975 - Found cast iron monument and updated ties.

July 5, 1978 - Found cast iron monument and updated ties.

July 31, 1981 - Found cast iron monument and updated ties.

August 15, 1984 - Found cast iron monument and updated ties.

July 14, 1992 - Found cast iron monument and updated ties.

March 30, 2001 - Found cast iron monument and updated ties. Established NAD 1983 (1996 adj.) Anoka County project coordinates by static GPS methods.

January 23, 2012 - Found cast iron monument and updated ties.

May 2, 2017 - Found cast iron monument flush and updated ties.

December 8, 2020 - Found cast iron monument flush verified position by VRS GPS methods and updated ties.