

# CERTIFICATE OF LOCATION OF GOVERNMENT CORNER

County of Anoka

State of Minnesota

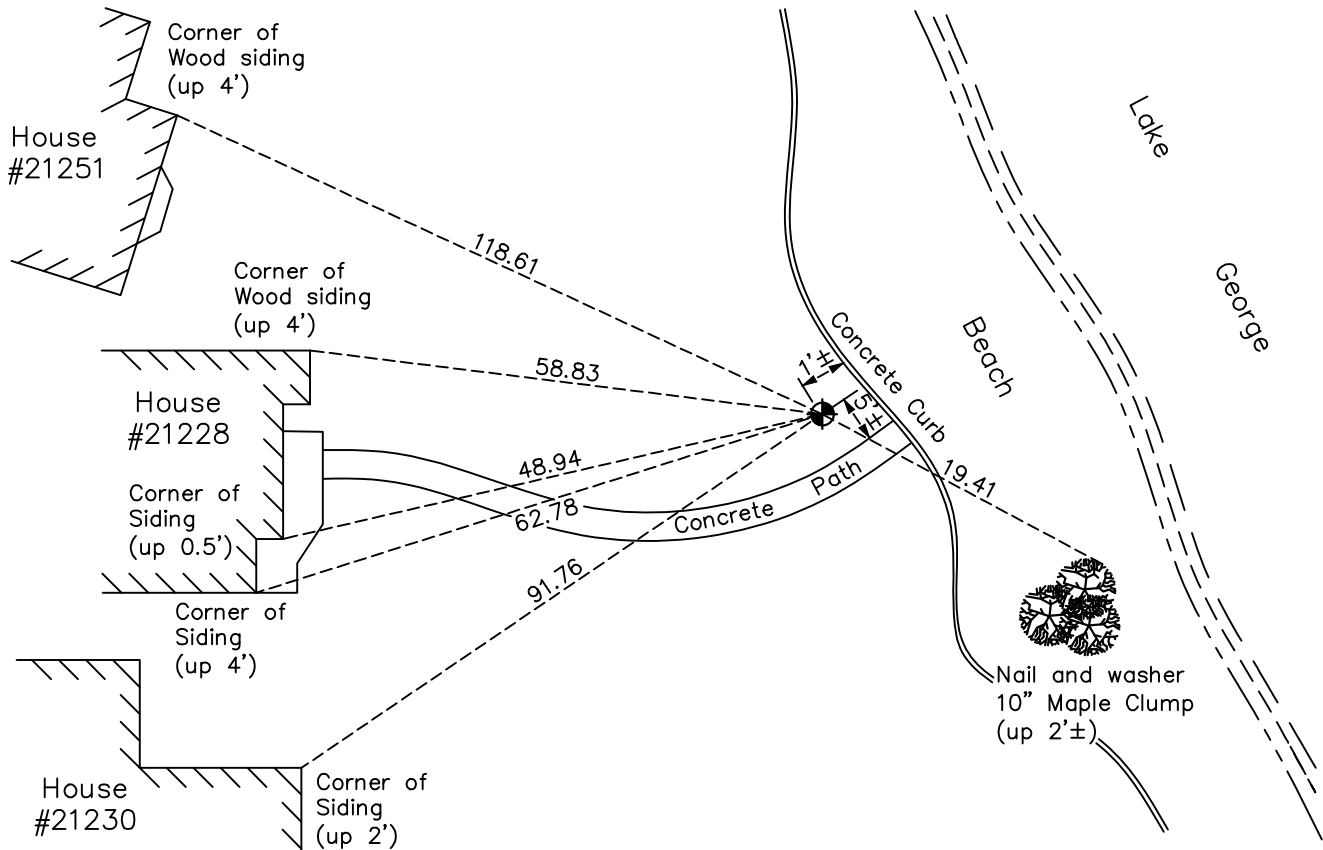
## Witness Corner of Sec. 16 Township 33 Range 24

On the 22nd day of September, 1964, the described corner was evidenced by a large rock

and to perpetuate the location of said corner, at the exact location thereof, a permanent marker was placed consisting of a cast iron monument on top of rock

AND on the 16th day of April, 2021, said permanent marker was found down 1'± and the ties were updated

Updated reference ties are as shown below.



Revision Date

06/09/2021

N.A.D. 1983 Coordinates  
(1996 Adjustment)

County Project Coordinates	
Northing	<u>216581.8711</u>
Easting	<u>479149.8046</u>
Date	<u>6/11/01</u>

I hereby certify that this United States public land survey monument record is correct and complete to the best of my knowledge and belief.

*David M Zieglmeier* Date 7/30/21

David Zieglmeier Anoka County Surveyor  
Minnesota License Number 46179

# HISTORY OF GOVERNMENT CORNER

Page No. 62

County of Anoka

State of Minnesota

Witness Corner of Sec. 16 Township 33 Range 24

## **CORNER HISTORY:**

September 22, 1964 - Set cast iron monument down 0.1'± on top of an existing large flat rock (1.2' x 1.2'±) 2238.07' North of W1/4 corner. Established ties to monument.

July 19, 1965 - Found cast iron monument and updated ties.

July 1, 1968 - Found cast iron monument up 0.2'± and updated ties.

August 10, 1971 - Found cast iron monument missing and set a broken(shorter) cast iron monument on top of rock. Updated ties.

July 3, 1975 - Found cast iron monument and updated ties.

July 5, 1978 - Found cast iron monument and updated ties.

August 18, 1981 - Found cast iron monument and updated ties.

August 3, 1984 - Found cast iron monument and updated ties.

July 8, 1992 - Found cast iron monument and updated ties.

June 19, 1997 - Found cast iron monument and updated ties.

June 11, 2001 - Found cast iron monument and updated ties. Established NAD 1983 (1996 adj.) Anoka County project coordinates by static GPS methods.

December 20, 2011 - Found cast iron monument down 1'±. Verified position by VRS GPS methods. Updated ties.

April 12, 2017 - Found cast iron monument down 1'± and updated ties.

April 16, 2020 - Found cast iron monument down 1'± verified position by VRS GPS methods and updated ties.