

CERTIFICATE OF LOCATION OF GOVERNMENT CORNER

County of Anoka

State of Minnesota

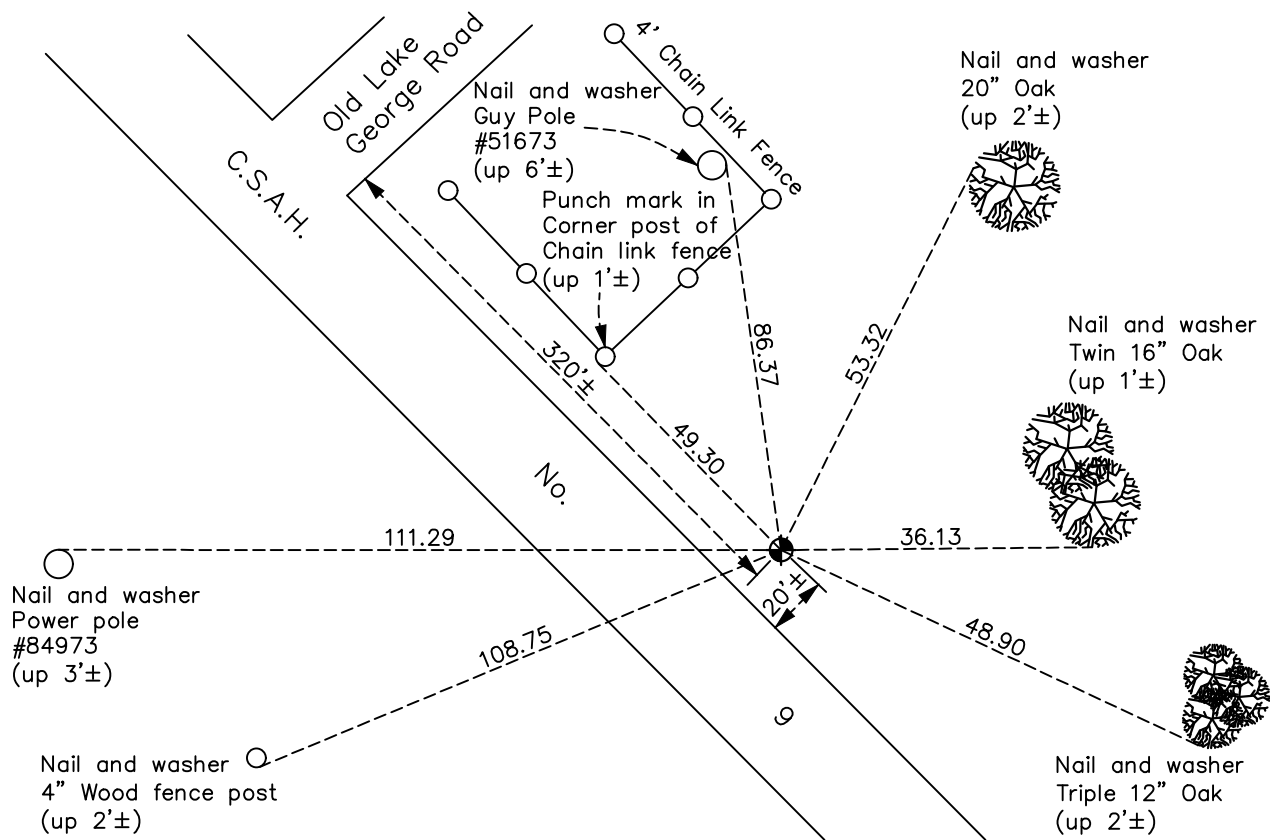
West 1/4 Corner of Sec. 16 Township 33 Range 24

On the 8th day of September, 1964, the described corner was evidenced by _____

and to perpetuate the location of said corner, at the exact location thereof, a permanent marker was placed consisting of a cast iron monument

AND on the 24th day of December, 2020, said permanent marker was found down 0.6'± and the ties were updated

Updated reference ties are as shown below.



Revision Date

06/09/2021

N.A.D. 1983 Coordinates
(1996 Adjustment)

County Project Coordinates	
Northing	<u>214345.9936</u>
Easting	<u>479244.4639</u>
Date	<u>6/07/01</u>

I hereby certify that this United States public land survey monument record is correct and complete to the best of my knowledge and belief.

David M Zieglmeier Date 7/30/21

David Zieglmeier Anoka County Surveyor
Minnesota License Number 46179

HISTORY OF GOVERNMENT CORNER

Page No. 64

County of Anoka

State of Minnesota

West 1/4 Corner of Sec. 16 Township 33 Range 24

CORNER HISTORY:

September 8, 1964 - Set cast iron monument flush using area resurvey. Established ties to monument.

August 3, 1965 - Found cast iron monument and updated ties.

July 1, 1968 - Found cast iron monument and updated ties.

July 28, 1971 - Found cast iron monument and updated ties.

July 3, 1975 - Found cast iron monument and updated ties.

July 5, 1978 - Found cast iron monument and updated ties.

July 27, 1981 - Found cast iron monument and updated ties.

August 3, 1983 - Found cast iron monument and set additional ties prior to road construction.

June 6, 1984 - Reset cast iron monument flush after construction and updated ties.

July 7, 1992 - Found cast iron monument and updated ties.

June 19, 1997 - Found cast iron monument and updated ties.

June 7, 2001 - Found cast iron monument and updated ties. Established NAD 1983 (1996 adj.) Anoka County project coordinates by static GPS methods.

July 20, 2011 - Found cast iron monument down 0.6'± and updated ties.

April 13, 2017 - Found cast iron monument down 0.6'±. Verified position by VRS GPS methods. Updated ties.

December 24, 2020 - Found cast iron monument down 0.6'±. Verified position by VRS GPS methods. Updated ties