

CERTIFICATE OF LOCATION OF GOVERNMENT CORNER

County of Anoka

State of Minnesota

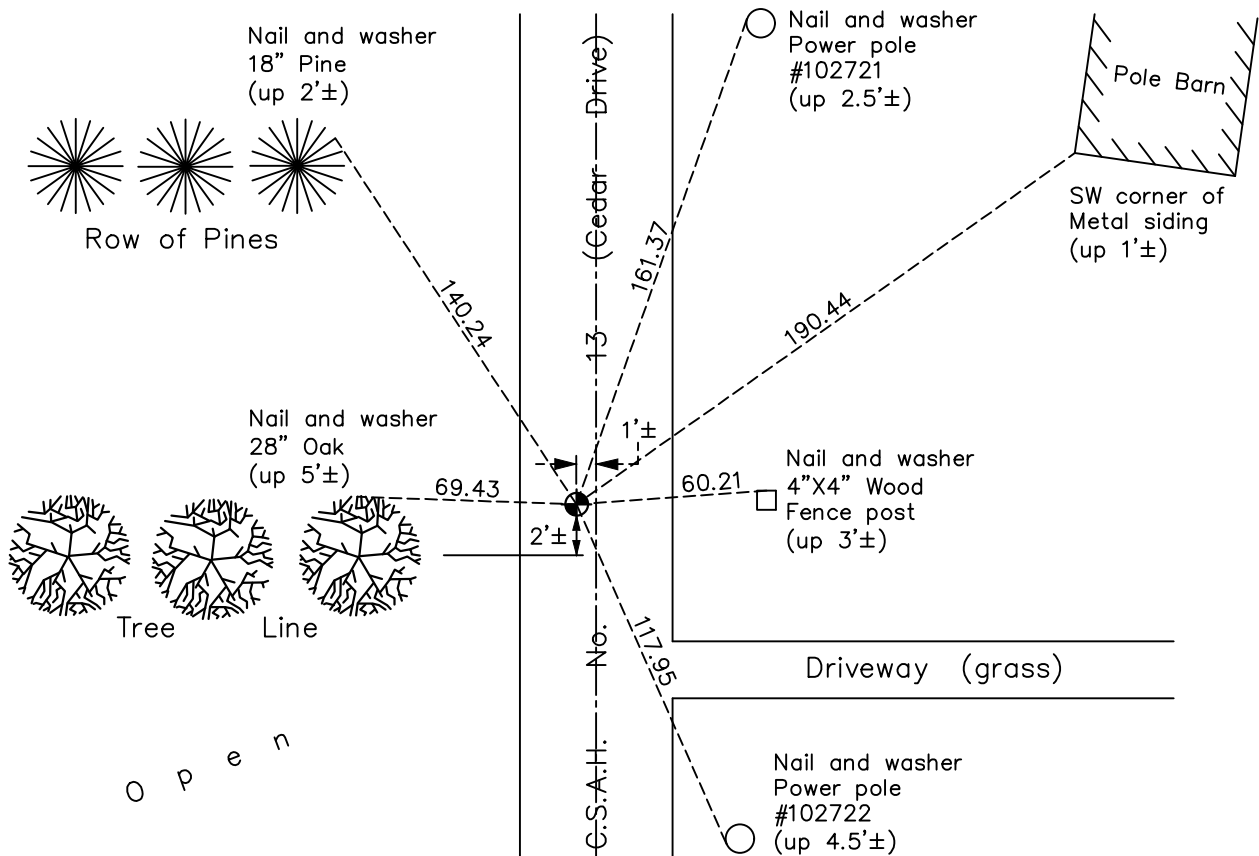
West 1/4 Corner of Sec. 13 Township 33 Range 24

On the 31st day of August, 1970, the described corner was evidenced by area resurvey

and to perpetuate the location of said corner, at the exact location thereof, a permanent marker was placed consisting of a cast iron monument

AND on the 1st day of November, 2019, said permanent marker was Reset with a cast iron monument flush and the ties were updated

Updated reference ties are as shown below.



Revision Date

12/2/19

N.A.D. 1983 Coordinates
(1996 Adjustment)

County Project Coordinates	
Northing	<u>214273.4549</u>
Easting	<u>494960.4149</u>
Date	<u>4/18/01</u>

I hereby certify that this United States public land survey monument record is correct and complete to the best of my knowledge and belief.

David M Zieglmeier Date 7/30/21

David Zieglmeier Anoka County Surveyor
Minnesota License Number 46179

HISTORY OF GOVERNMENT CORNER

Page No. 68

County of Anoka

State of Minnesota

West 1/4 Corner of Sec. 13 Township 33 Range 24

CORNER HISTORY:

August 31, 1970 - Set cast iron monument using area resurvey and established ties to monument.

July 22, 1971 - Found cast iron monument and updated ties.

August 29, 1972 - Raised cast iron monument.

July 3, 1975 - Found cast iron monument and updated ties.

July 5, 1978 - Found cast iron monument and updated ties.

July 17, 1981 - Found cast iron monument and updated ties.

August 8, 1984 - Found cast iron monument and updated ties.

February 21, 1992 - Found cast iron monument and updated ties.

May 29, 1997 - Found cast iron monument and updated ties.

April 18, 2001 - Found cast iron monument, established NAD 1983 (1996 adj.) Anoka County project coordinates by static GPS methods and updated ties.

October 4, 2011 - Found cast iron monument and updated ties.

April 4, 2017 - Found cast iron monument flush, verified position by VRS GPS methods and updated ties.

June 17, 2019 - Found cast iron monument, verified position by VRS GPS methods and updated ties prior to road construction. Removed monument.

November 1, 2019 - Set cast iron monument flush after road construction using static GPS methods. Verified position by VRS GPS methods and updated ties.