

CERTIFICATE OF LOCATION OF GOVERNMENT CORNER

County of Anoka

State of Minnesota

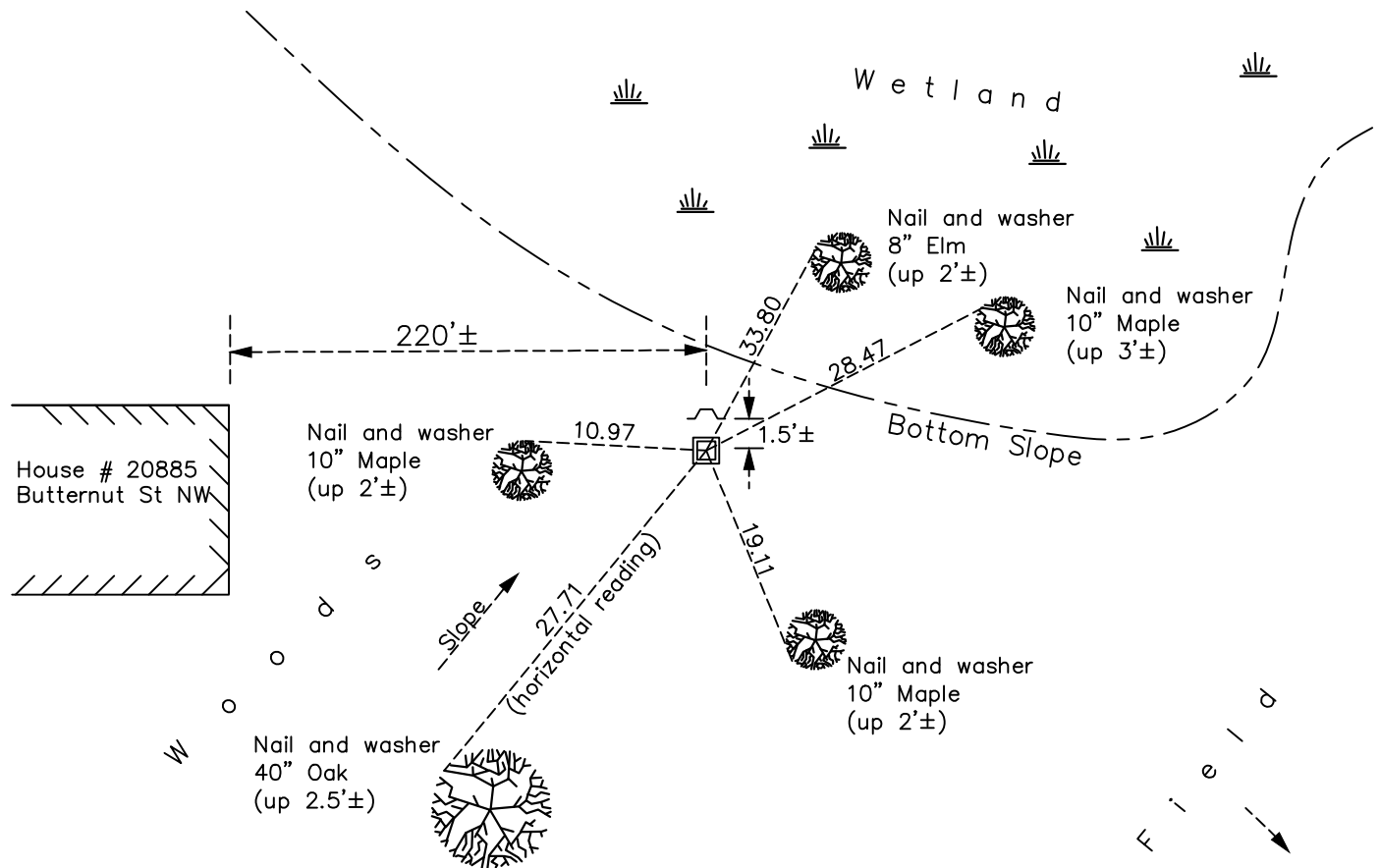
East 1/4 Corner of Sec. 13 Township 33 Range 24

On the 14th day of February, 2024, the described corner was evidenced by a cast iron monument

and to perpetuate the location of said corner, at the exact location thereof, a permanent marker was placed consisting of a 2"x 2"x 6' Telespar w/ aluminum cap and punch mark, set up 1.2'± in same location replacing found cast iron monument, up 0.5'± & leaning to east, which was removed.

AND on the 14th day of February, 2024, said permanent marker was measured with RTK GPS method to verify location and ties were updated after setting.

Updated reference ties are as shown below.



Revision Date
3/28/2024

N.A.D. 1983 Coordinates
 (1996 Adjustment)

County Project Coordinates	
Northing	<u>214339.0348</u>
Easting	<u>500242.0715</u>
Date	<u>5/15/01</u>

I hereby certify that this United States public land survey monument record is correct and complete to the best of my knowledge and belief.

David Zieglmeier Date 3/28/24

David Zieglmeier Anoka County Surveyor
 Minnesota License Number 46179

HISTORY OF GOVERNMENT CORNER

Page No. 69

County of Anoka

State of Minnesota

East 1/4 Corner of Sec. 13 Township 33 Range 24

CORNER HISTORY:

August 31, 1970 - Set cast iron monument using area resurvey. Established ties to monument.

7/22/1971, 7/3/1975, 7/5/78, 8/13/84 - Found cast iron monument and updated ties.

July 9, 1992 - Found cast iron monument and updated ties. Set sign and post north of monument.

May 15, 2001 - Found cast iron monument with sign and post north of monument and updated ties.

9/14/2011, 4/4/2017, 2/20/2018 - Found cast iron monument up 0.5'± with sign and post north of monument. Updated ties.

November 24, 2020 - Found cast iron monument up 0.5'±, leaning east with sign & post on north side. Updated ties.

February 14, 2024 - Found cast iron monument up 0.5'±, leaning east; removed. Replaced with 2"x 2"x 6' Telespar with 'County Surveyor' cap and punch mark, set up 1.2'±. Set to published coordinates using RTK GPS method and historical ties. Updated ties after setting. Sign and post to north side of monument.