

CERTIFICATE OF LOCATION OF GOVERNMENT CORNER

County of Anoka

State of Minnesota

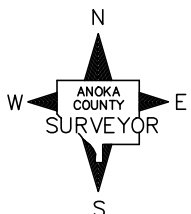
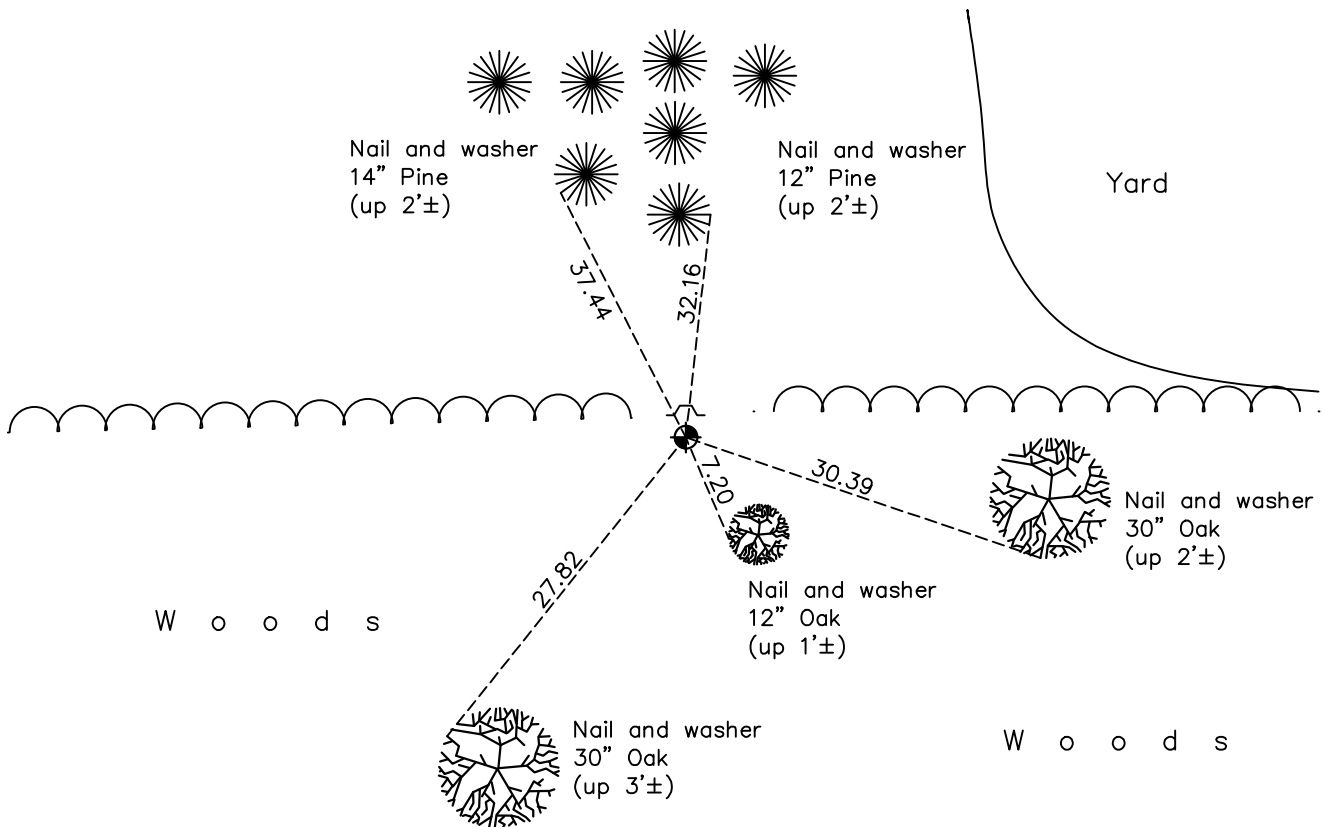
Northeast Corner of Sec. 24 Township 33 Range 24

On the 5th day of May, 1972, the described corner was evidenced by area resurvey

and to perpetuate the location of said corner, at the exact location thereof, a permanent marker was placed consisting of a cast iron monument with a sign and post on the north side

AND on the 24th day of November, 2020, said permanent marker was found down 0.1'± with a sign and post on the north side and the ties were updated

Updated reference ties are as shown below.



Revision Date

06/10/2021

N.A.D. 1983 Coordinates
(1996 Adjustment)

County Project Coordinates	
Northing	<u>211702.2548</u>
Easting	<u>500244.9977</u>
Date	<u>6/07/01</u>

I hereby certify that this United States public land survey monument record is correct and complete to the best of my knowledge and belief.

David M Zieglmeier Date 7/30/21

David Zieglmeier Anoka County Surveyor
Minnesota License Number 46179

HISTORY OF GOVERNMENT CORNER

Page No. 69A

County of Anoka

State of Minnesota

Northeast Corner of Sec. 24 Township 33 Range 24

CORNER HISTORY:

May 5, 1972 - Set cast iron monument using area resurvey. Set sign and post north of monument. Established ties to monument.

June 11, 1987 - Found cast iron monument sign and post north of monument and updated ties.

August 12, 1992 - Found cast iron monument sign and post north of monument and updated ties.

June 23, 1997 - Found cast iron monument sign and post north of monument and updated ties.

June 7, 2001 - Found cast iron monument sign and post north of monument and updated ties.

September 14, 2011 - Found cast iron monument sign and post north of monument and updated ties.

May 31, 2017 - Found cast iron monument down 0.1± sign and post north of monument and updated ties.

November 24, 2020 - Found cast iron monument down 0.1± sign and post north of monument and updated ties.